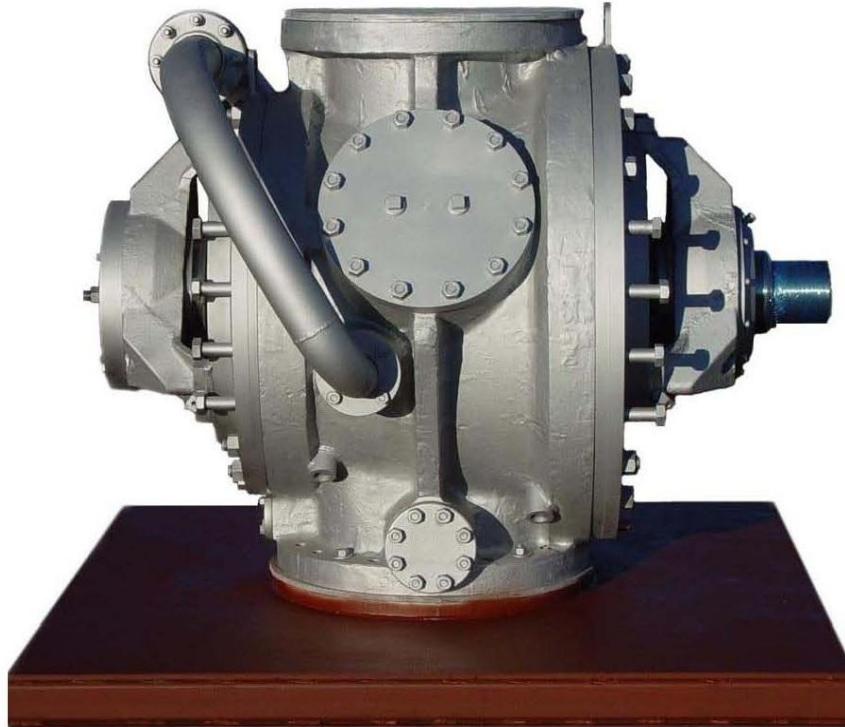




MST Corporation
1659 SW Baldwin Rd
Prineville, OR 97754
Phone: (541) 416-9000
Fax: 1.877.416.0628

Manufactured in USA-Oregon
24x7 Service & Support



MST—Bauer Valve Specialists

- Complete Valve & Gearbox Restorations
- All High & Low Pressure Sizes/Models; New, Remanufacture and Rebuilding
- New Replaceable Stuffing Box Upgrades
- Advanced CenterSeal™ design option(s)
- OEM Drawings & Equipment
- Innovative 2D/3D CAD/CAM/CNC
- OEM Parts: New & Restored
- All Welding & Machining In-House
- Technical Support & Onsite Services
- Life Cycle Analysis
- Metallurgical Expertise
- Progressive Customer Teamwork
- Retrofitting New Designs
- Standard and Upgrade Repairs
- Shipping & Handling Service

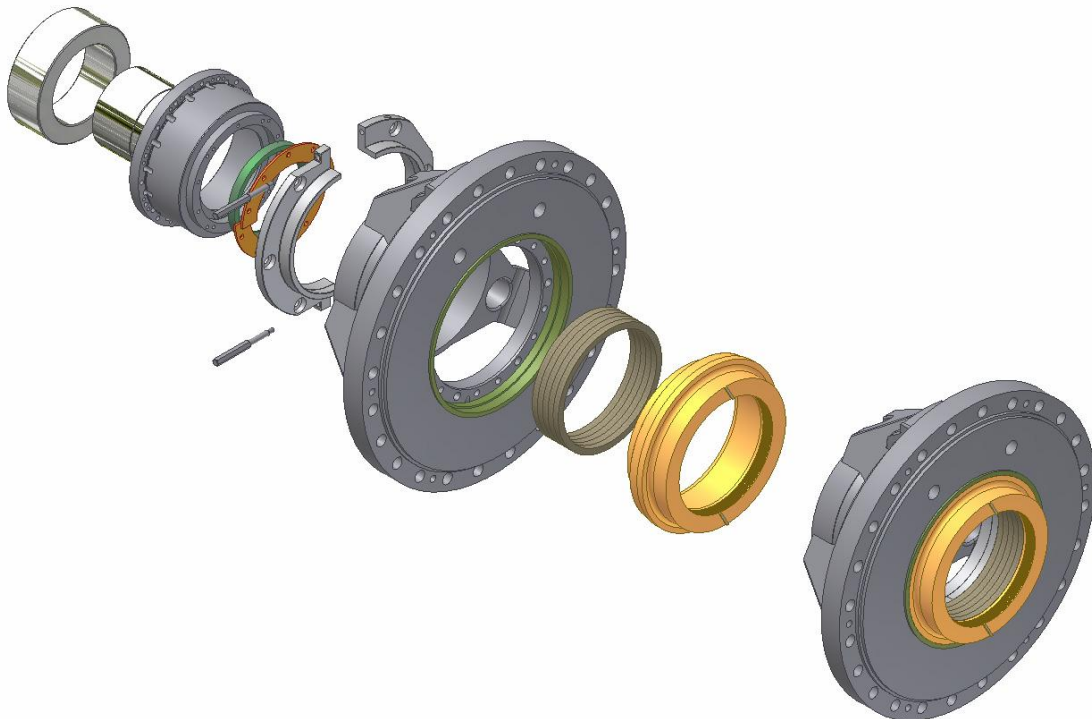
[Brief News Update] MST Corporation has been in the high pressure rotary valve business for over 25 years. More importantly, our customer's should know we recently purchased the entire Bauer Valve OEM line from Voith Paper. This acquisition provides MST with OEM drawings, foundry patterns, precision grinding fixtures, special equipment, etc, helping us to better serve our Bauer Valve customers.

[Innovative Designs] It is our mission to upgrade the valves with practical innovative ideas. Our designs are currently in production with some of our customers. For example, our modular design conversion allows the customer to provide onsite repairs if for example the packing stop ring is worn away—old design requires welding—our design allows replacement parts.

[Customer Satisfaction] we strive to exceed our customer's expectations and look forward to a collaborative exchange of ideas or provide turnkey service—tailoring to each customer's needs. The bottom line, we are flexible to meet our customer's requests in today's multitasking business demands—it is MST's nature to always make steady improvements for each customer we feel privileged to work for.

[CenterSeal™ New, Restoration & Upgrade Options] Upon request, MST's technical staff will evaluate the customer's system and provide an assessment showing how your system may be adapted to achieve the benefits of CenterSeal™ design; how a customer may benefit using an MST-Bauer CenterSeal™ valve. CenterSeal™ affords the user faster break-in; superior rotor sealing and packing life; simpler customer onsite maintenance, and other operational enhancements.

[Modular Upgrade Options] what options will best meet your company needs? With this question in mind, we offer an MST modular integrated designed valve, and a standard valve as an option. Currently MST has in stock nearly each component in new and used condition. In a nutshell, the MST modular components are what we call the bearing inserts and stuffing box inserts. The stuffing box inserts are heat treat hardened for longer life cycles—emergency repairs can be finished onsite by simply replacing with new—no welding required.



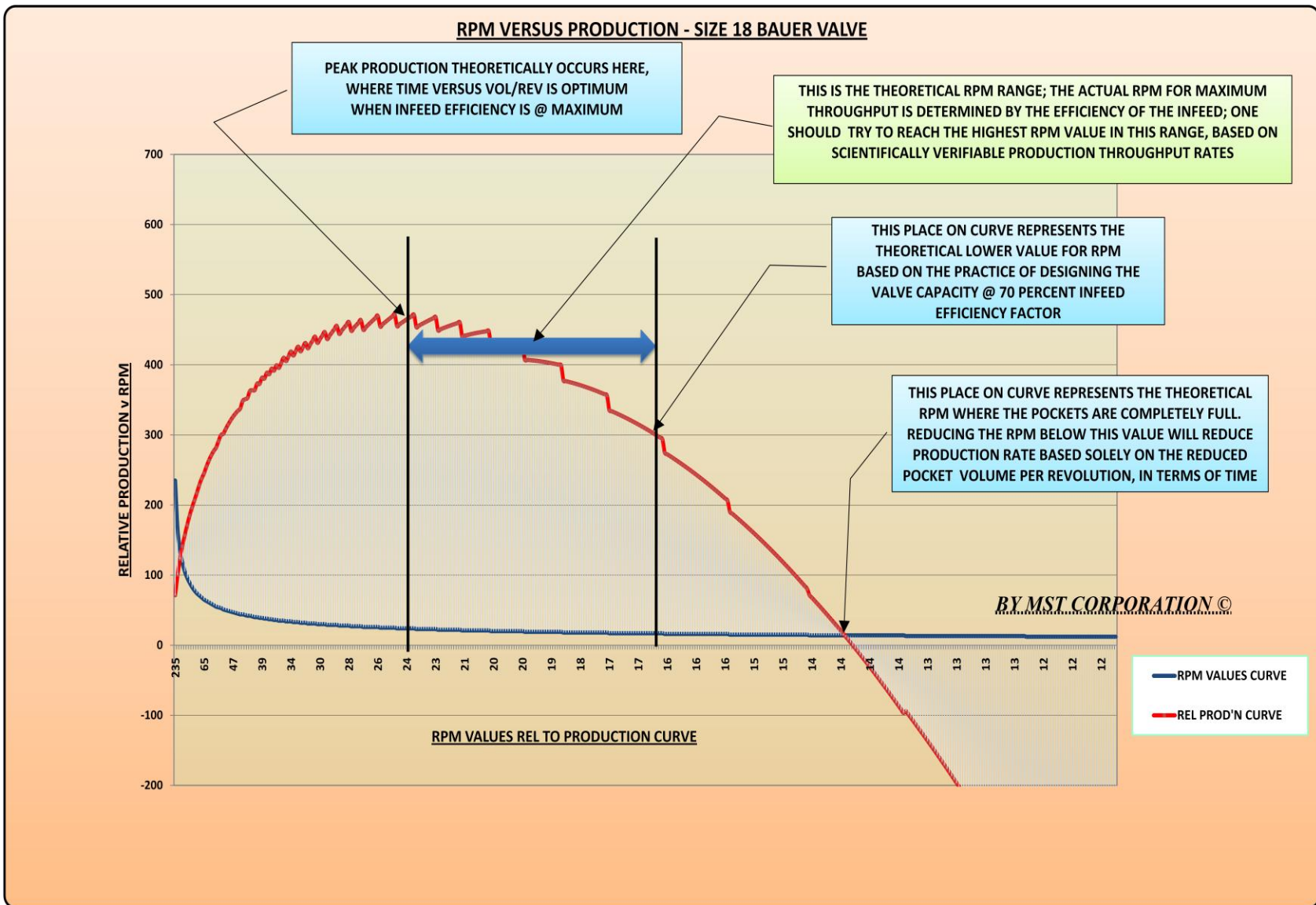


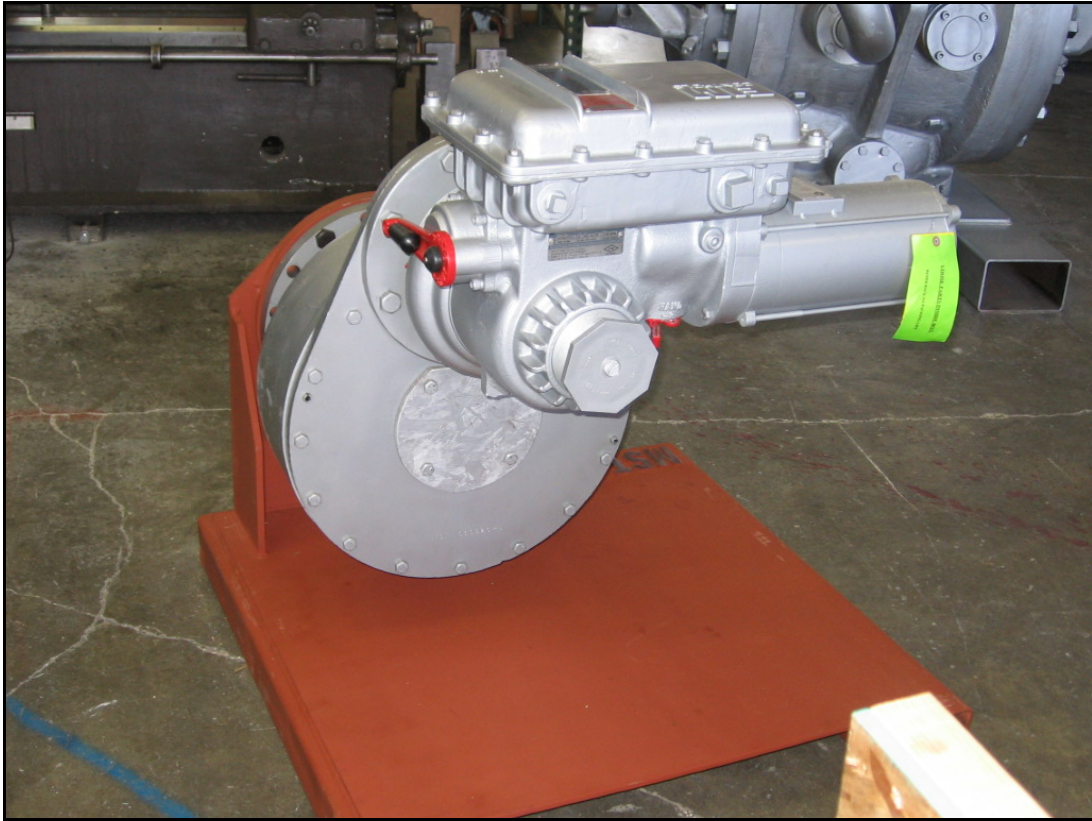
Figure 1



MST #01: Emergency Rush Repair Model 77 /451-18" High Pressure



MST #02: Same As Above



MST #03: Gearbox w/Actuator for New Mill Located Overseas



MST #04: Model 69 /451-18" for New Mill Located Overseas



MST #05: Model 69 /451-18" Rotor & Liner High Pressure for Cotton Linters



MST #06: Restored Gearbox & Actuator Assembly



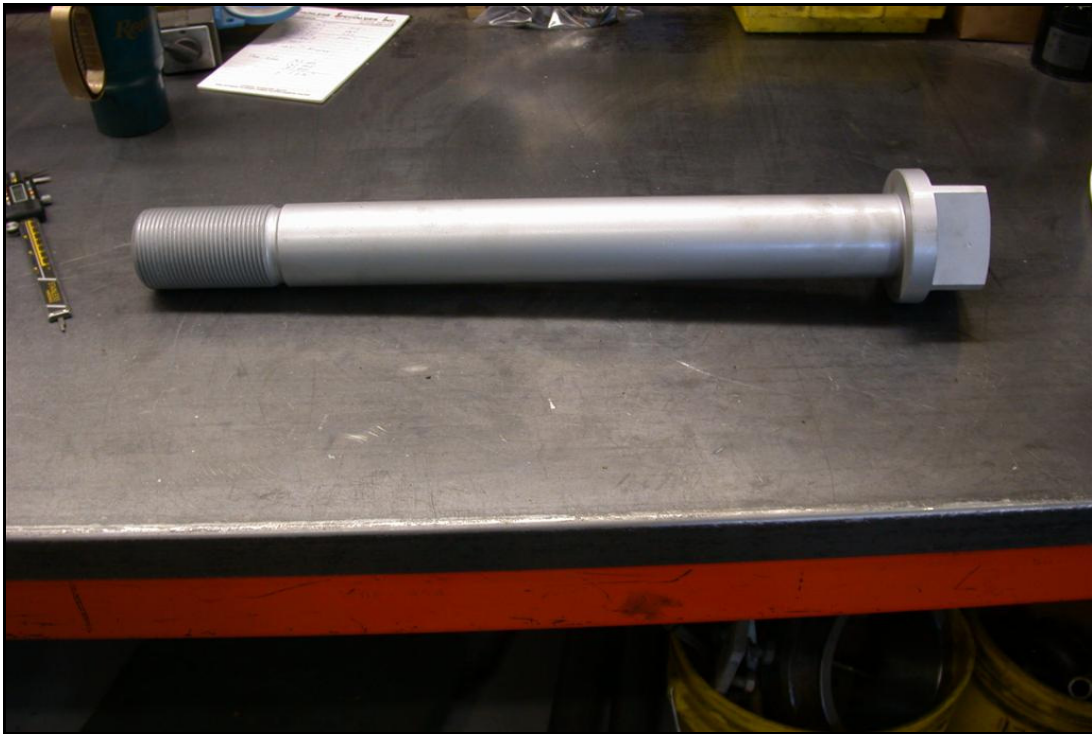
MST #07: MST's Modular Stuffing Box Upgrade...Featuring Labyrinth Design



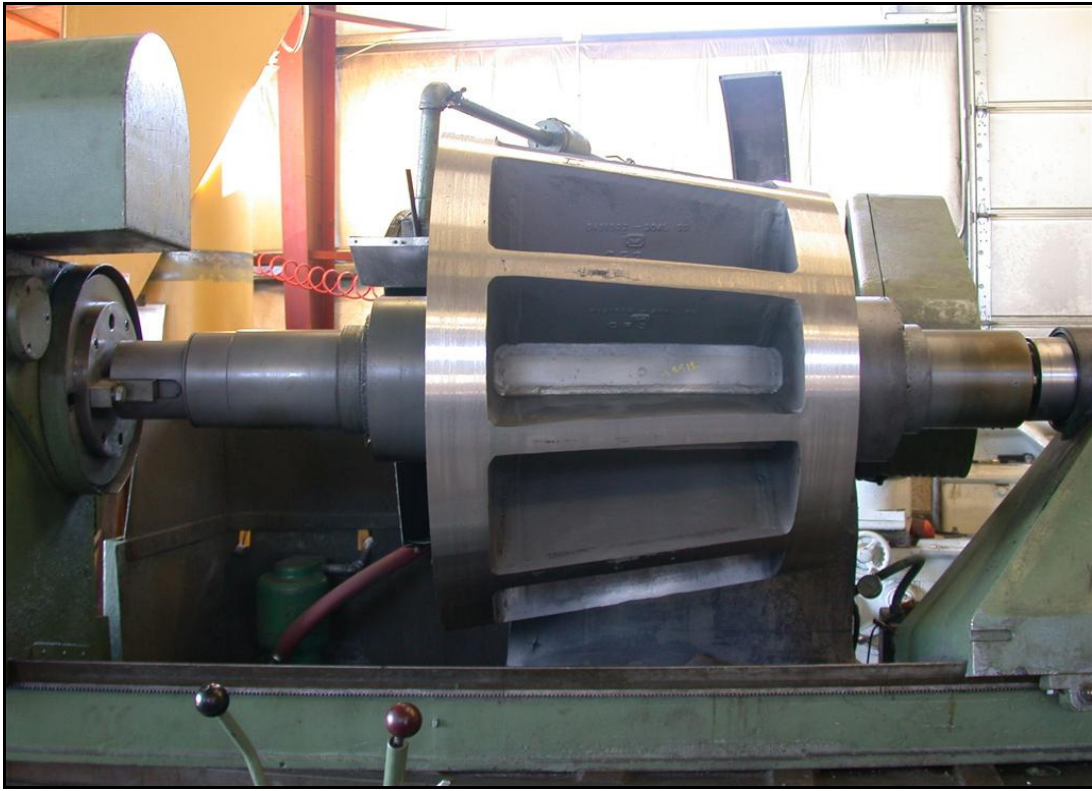
MST #08: MST's Modular Stuffing Box Upgrade Installing into a Small Head



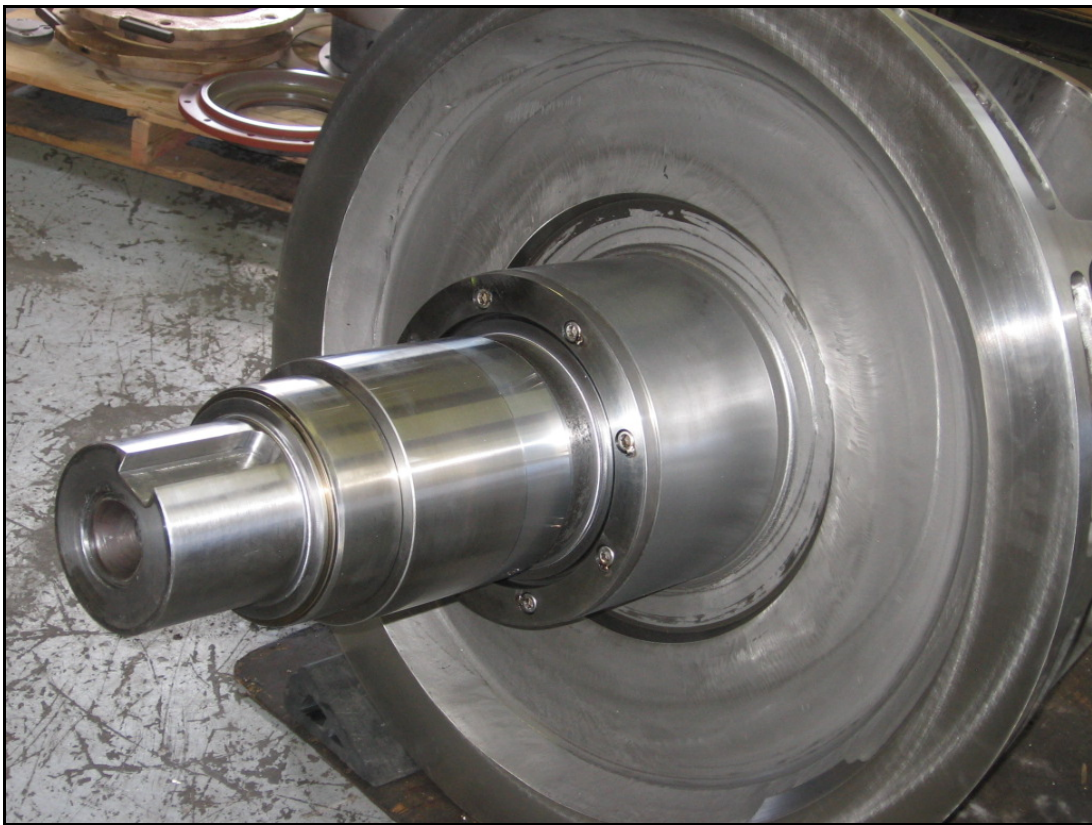
MST #09: New OEM Replacement Parts – Split Lantern Rings



MST #10: New OEM Replacement Parts – Gearbox Thrust Bolt



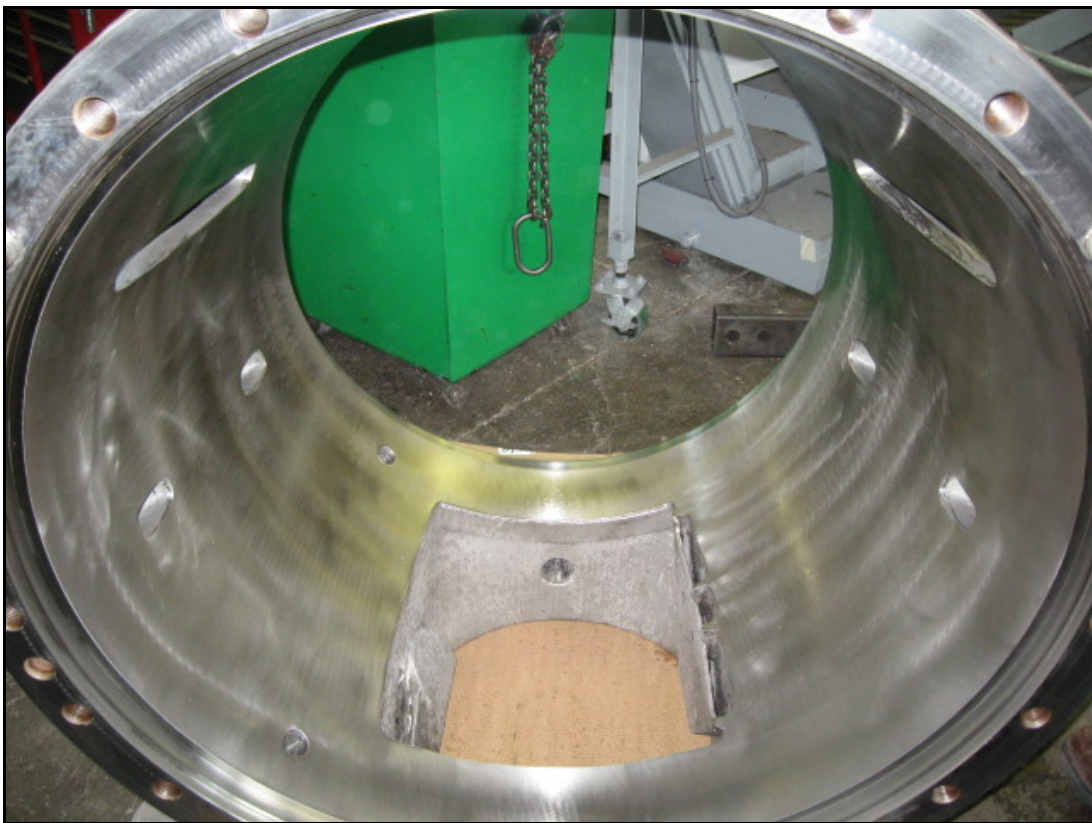
MST #11: OEM Acquired Custom Grinder for all Sizes of Bauer HPRV's



MST #12: Restored to OEM "As New Standards"



MST #13: Severe Cracks From Poor Weld Preps (Prior Vendor Unknown)



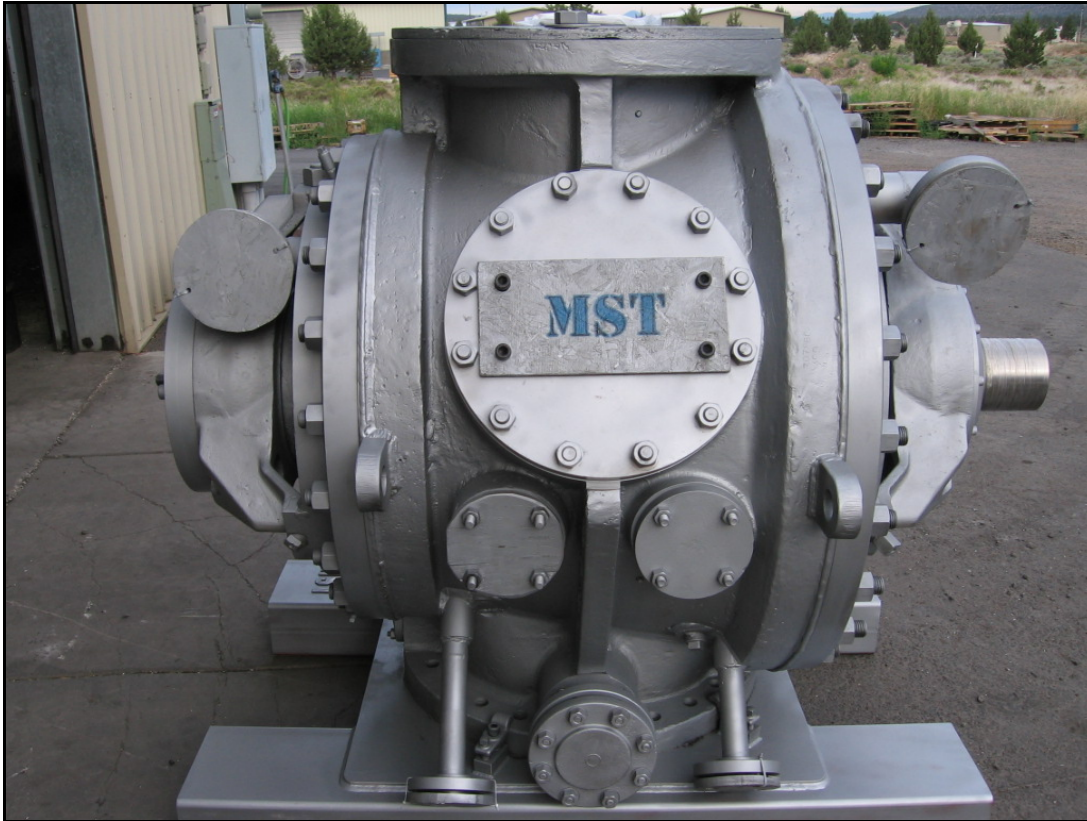
MST #14: Body Bore Same As Above, After MST Completed The Restoration



MST #15: Dedicated Shipping for All Critical Spare “Redline” Equipment



MST #16: Loading Procedures Are Safely Administered by MST



MST #17: Bauer 18" /451-77 High Pressure Staged for Shipping



MST #18: Supply Chain Management Service for Critical Bearings



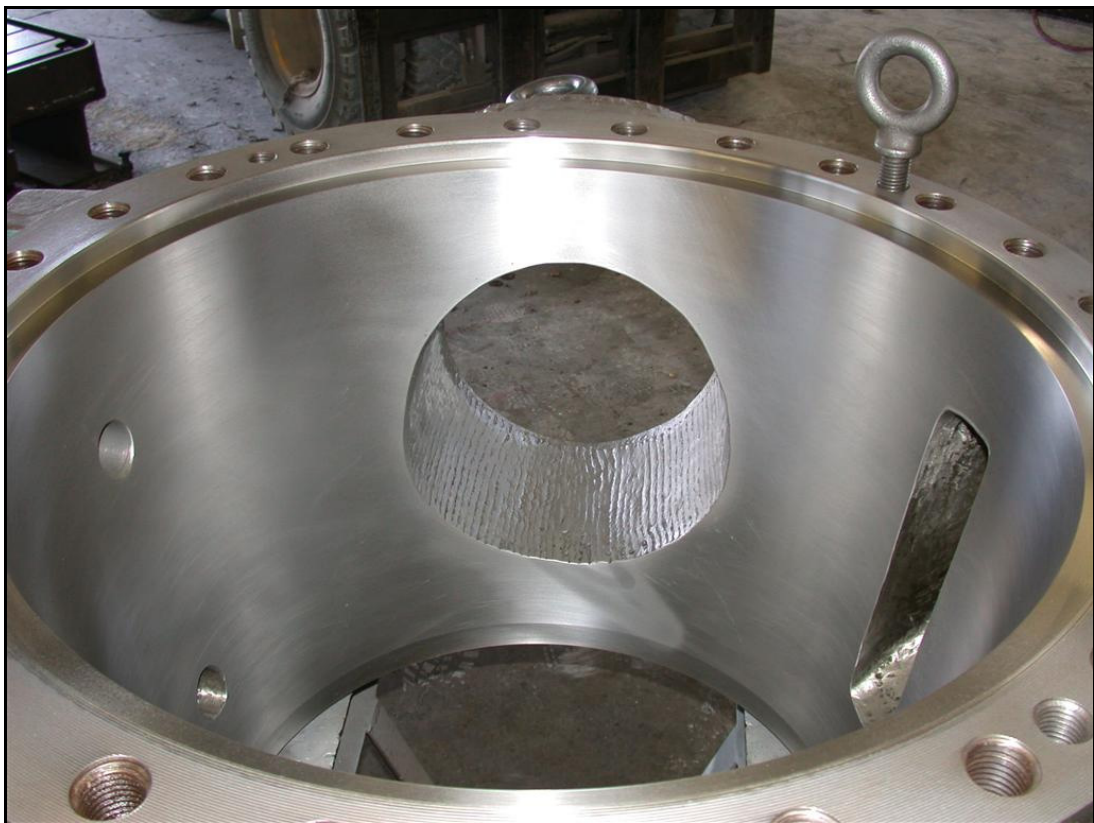
MST #19: Assembly of Model 69 /451-18” QC Documentation on All Parts



MST #20: Bauer Model 75-12” Custom Refiner Line—Wood Products Industry



MST #21: Same As #20 with Custom Steam Shields, Packing & Seal Upgrades



MST #22: Bauer Model 75-12" Shown Here—We Precision Grind All Body Bores and Rotor OD's Hardfacing—To Precision Test-Fit Specs.

MST CORPORATION'S NO-NONSENSE WARRANTY

At MST Corporation, we believe a warrantee, and a guarantee, in essence, is in reality, a statement about the integrity of the parties to a transaction. Typically, a warranty says the vendor "warrants" their product against defects in materials and workmanship for some stated period, usually one year. At MST Corporation, we do not feel that time should be a factor. Consequently, if our methods of producing an end-result meet the standards we sell and adhere to; then our material and workmanship should be timeless.

The workmanship of any vendor—with time honored integrity and ethics—should speak for itself. Either MST Corporation does what we say, or we do not. Time is not at issue. As such, MST Corporation warrants our workmanship and materials for as long as you own the item—period. We intend our company to symbolize integrity and ethics, and we respectfully request the same from the people we deal with. If we can both adhere to these timeless, common sense principles, everyone benefits.

Ray Lackey



CEO / Technical Analyst

MST CORPORATION

(541) 416-9000

www.mstcorp.com



CONTACT INFORMATION

Ship To:

1659 SW Baldwin Road
Prineville, OR 97754-9335
Phone: (541) 416-9000
Fax: 1.877.416.0628

Remit To:

1659 SW Baldwin Road
Prineville, OR 97754-9335
Phone: (541) 416-9000
Fax: 1.877.416.0628

Mitch Logan.....*Customer Service and Support*.....mitch@mstcorp.com

Julie Davison.....*Office Administration*.....julie@mstcorp.com

Troy Lackey.....*President*.....troy@mstcorp.com

Ray Lackey.....*CEO/Technical Analyst*.....ray@mstcorp.com