



# MST CORPORATION

**PULP • CHEMICAL • PROCESS INDUSTRIES**

*Design • Manufacturing • Machining • Welding • Restoration • Reverse Engineering*

*Value Added Engineering • New Parts • Process Equipment • Resolution Analysis*

***Dedicated to Quality and Advancements in Metal Working Technology***

**(541) 416-9000**

*Please See Back Cover for Contact Info*

# PRODUCT INFORMATION REQUEST FORM

To help MST CORPORATION understand and meet your needs please look through our photo catalog and match your product as close to one of the photos in this catalog. Please put a check mark by the category and then list the page and item number. If you do not find a product match and would like information about our services, please fill out the general information category along with your company information and Fax, EMAIL or Phone MST and we will be glad to prepare a quote for you.

Company Name: \_\_\_\_\_

Address: \_\_\_\_\_ City: \_\_\_\_\_ State: \_\_\_\_\_ Zip: \_\_\_\_\_

Contact Person: \_\_\_\_\_ Best time to call: \_\_\_\_\_

Phone: (\_\_\_\_) \_\_\_\_\_ - \_\_\_\_\_ Fax: (\_\_\_\_) \_\_\_\_\_ - \_\_\_\_\_ Email: \_\_\_\_\_

## HOW CAN WE SERVE YOU:

\_\_\_\_\_  
\_\_\_\_\_  
\_\_\_\_\_  
\_\_\_\_\_  
\_\_\_\_\_  
\_\_\_\_\_

- |                                            |                                                  |                                             |
|--------------------------------------------|--------------------------------------------------|---------------------------------------------|
| <input type="checkbox"/> ROTARY FEEDERS    | <input type="checkbox"/> REPLACEMENT PARTS       | <input type="checkbox"/> SCREENING          |
| <input type="checkbox"/> PLUG FEEDERS      | <input type="checkbox"/> VALUE ADDED ENGINEERING | <input type="checkbox"/> BLEACHING TITANIUM |
| <input type="checkbox"/> PAPER MANUFACTURE | <input type="checkbox"/> PULPING                 | <input type="checkbox"/> POWER & RECOVERY   |
| <input type="checkbox"/> STOCK PREPERATION | <input type="checkbox"/> PUMPING                 | <input type="checkbox"/> WOOD PREPERATION   |
| <input type="checkbox"/> CUSTOM PROJECTS   | <input type="checkbox"/> CONVEYING               |                                             |

PAGE NUMBERS: \_\_\_\_\_

ITEM NUMBERS: \_\_\_\_\_

## **MST CORPORATION**

**Phone (541) 416-9000 • Fax (877) 416-0628 •**





ITEM 1100



MST CUSTOMIZED BAUER HIGH PRESSURE ROTARY VALVE  
MODULARIZED DESIGN

**MST CORPORATION**



**Lantern Rings**



**18" Bauer Rotor & Liner Restore Kit**



**12" Bauer Valve**

With MST's custom stuffing box and bearing shield conversion (*cannot see in photo since it is internal*), our customers increase life cycle and lower maintenance costs.





**Limiter Gearbox Restoration**

MST acquisitioned Voith's Bauer Valve division in 2005. This provided MST with OEM drawings and the original Sprout-Bauer custom rotor grinder, other dedicated equipment, along with several inventory parts, and foundry patterns, etc.

MST also stocks roller bearing sets for our customers due to the long lead times for this particular bearing and custom inner race—supply chain management.

It is our goal to overcome our customers with satisfaction, especially in times of unexpected emergency repairs.

MST also offers new ideas that will upgrade your valves to modern technologies, et al.

# BAUER VALVE



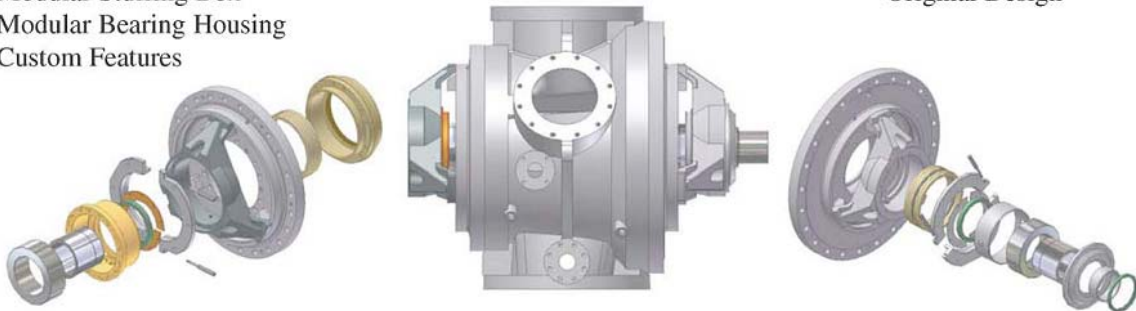
**STANDARD • AND/OR UPGRADING REPAIRS**  
 Technical Support • Metallurgical • Consulting  
 Rebuilding • Manufacturing • Design Upgrades  
 Advancing High Pressure Rotary Valve Technology for over 20 years

*In business to serve your needs with new ideas!*

MST's Retrofit Upgrade Options

- Modular Stuffing Box
- Modular Bearing Housing
- Custom Features

Original Design



***MST Advancements – Improves on Outdated Technologies***



## **MST CORPORATION**

**Manufacturing Headquarters**  
2433 SW Cessna Drive • Prineville, OR 97754  
Phone: (541) 416-9000 • Fax 877.416.0628  
www.mstcorp.com

### **\*\*SERVING CONTINUOUS PROCESS INDUSTRY\*\***

**INNOVATION • MANUFACTURING • RESTORATION • UPGRADING • CONSULTING • TECHNICAL ANALYSIS •  
MANUFACTURING AND RESTORATION PROCESS ANALYSIS • VALUE ADDED ENGINEERING • REVERSE ENGINEERING •  
SERVICES • TECHNICAL DRAWING AND ILLUSTRATION • TECHNICAL REPORTING**

---

Date: August 18, 2006

---

### **Testimonial List<sup>1</sup>:**

Terry Rohring - Mill Wright Foreman /Planner.  
Port Townsend Paper Corporation • Port Townsend, WA • (360) 379-2219 P  
(360) 379-2080 F • terryr@ptpc.com  
30" ESCO LE HPRV /MST Redesign /Upgrade  
Kraft Pulp on M&D Digester

Bob Wolfe - Reliability Engineer  
Buckeye Technologies Inc • Memphis, TN • (901) 320-8573 P  
(901) 320-8577 F • bob\_wolfe@bkitech.com  
36" Black Clawson LE HPRV /MST Redesign /Upgrade  
Cotton Linter /Horizontal (Pandia) Digester /Chemical Pulping

Ricky Coats - Purification Maintenance Coordinator  
Buckeye Technologies Inc • Memphis, TN • (901) 320-8640 P  
(901) 320-8867 F • ricky\_coats@bkitech.com  
36" Black Clawson LE HPRV /MST Redesign /Upgrade  
Cotton Linter /Horizontal (Pandia) Digester /Chemical Pulping

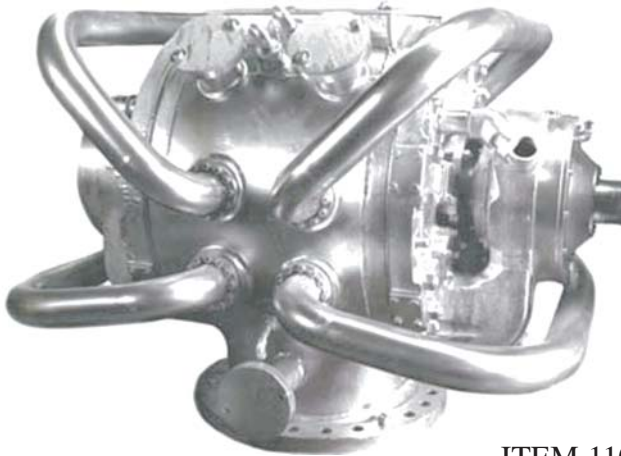
Jim Kazeck – Maintenance Foreman /Team Leader  
NORPAC • Longview, WA • (360) 636-6372 P  
(360) 423-1514 F • jim.kazeck@weyerhaeuser.com  
Bauer M69 /MST Upgrade /Conversion to M71 w/MST Modular Design  
TPM Refiner System

Mitch Logan  
Customer Service and Support

---

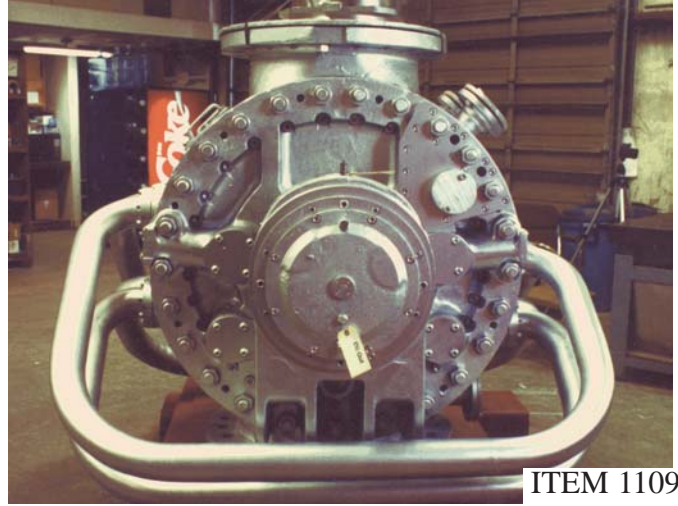
<sup>1</sup> ...more available upon request





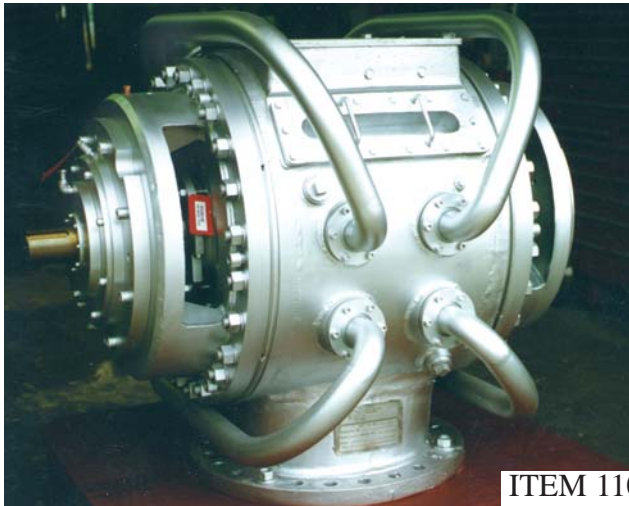
ITEM 1101

MST CUSTOMIZED 30" HIGH PRESSURE ROTARY FEEDER VALVE-USED ON M&D DIGESTER SYSTEM



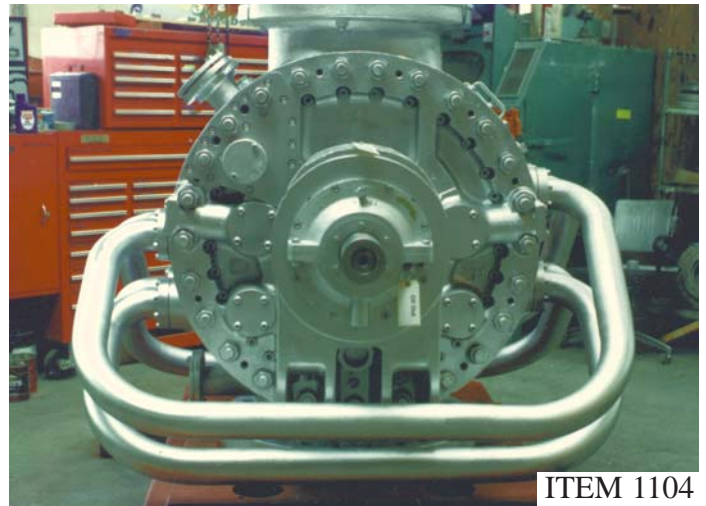
ITEM 1109

MST CUSTOMIZED 30" HIGH PRESSURE ROTARY FEEDER VALVE-USED ON M&D DIGESTER SYSTEM



ITEM 1103

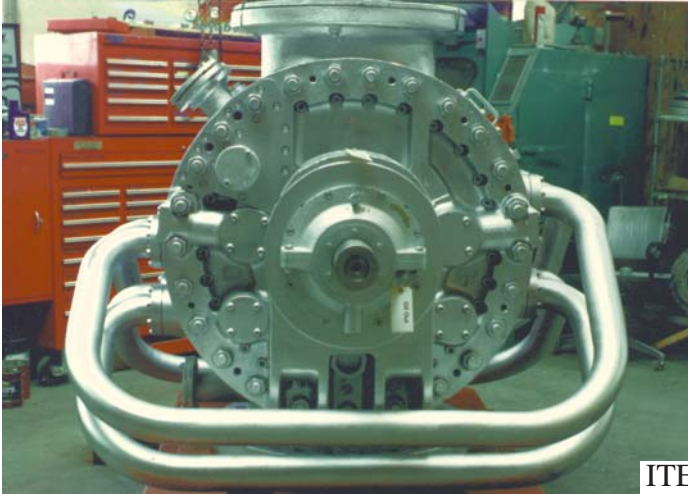
MST MANUFACTURE, 30" HIGH PRESSURE ROTARY FEEDER VALVE



ITEM 1104

MST CUSTOMIZED 36" HIGH PRESSURE ROTARY FEEDER VALVE-USED ON M&D DIGESTER SYSTEM





ITEM 1105



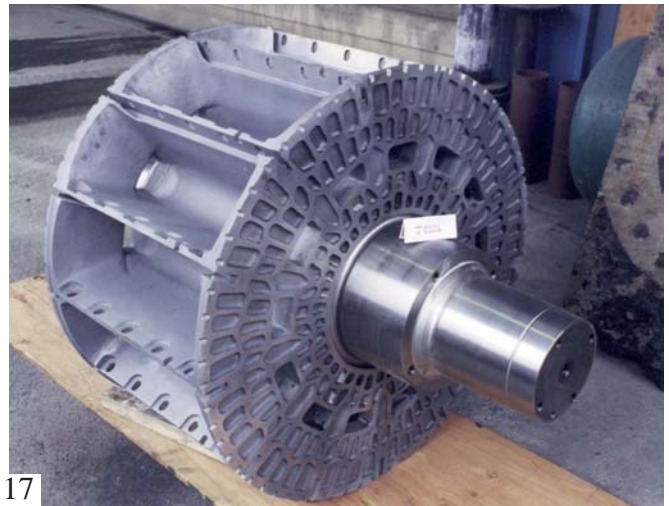
### 36" HIGH PRESSURE ROTARY FEEDER VALVE CONVERTED TO MST N2000-A FEATURE SET

It is wrong to think of science as a mechanical record of facts, and it is wrong to think of the arts as remote and private fancies. What makes each human, what makes them universal, is the stamp of the creative mind.

J. Bronowski

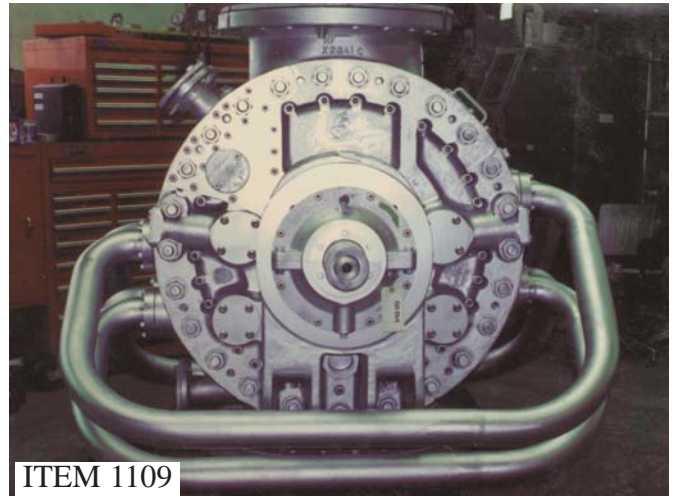


ITEM 1117



### ROTOR: MST STYLE HIGH PRESSURE ROTARY VALVE WITH LABYRINTH SEAL SYSTEM

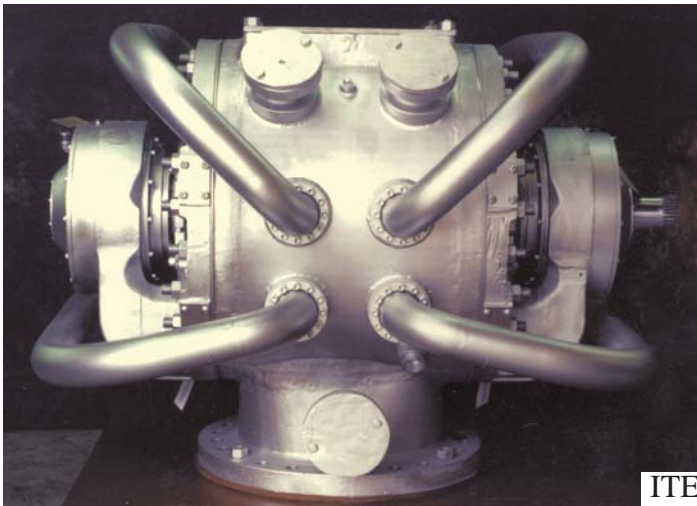




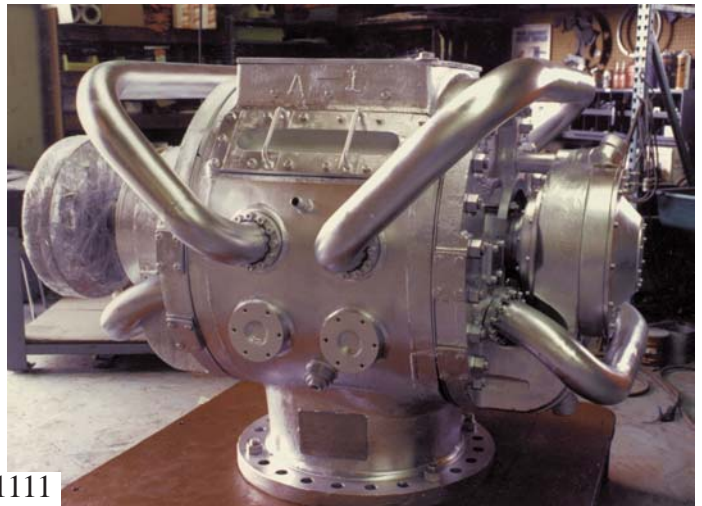
ITEM 1109

36" HIGH PRESSURE ROTARY FEEDER VALVE  
CONVERTED TO MST N2000-A FEATURE SET

## MST CORPORATION

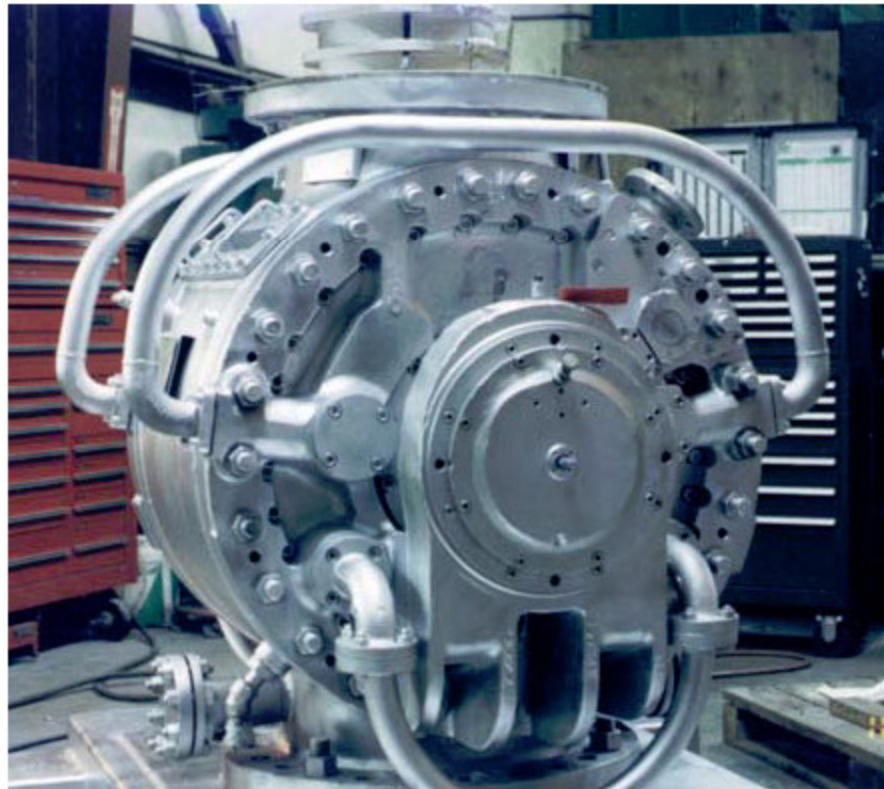


ITEM 1111



CUSTOM 30" HIGH PRESSURE ROTARY FEEDER VALVE,  
RETROFITTED WITH ENLARGED BEARING SET



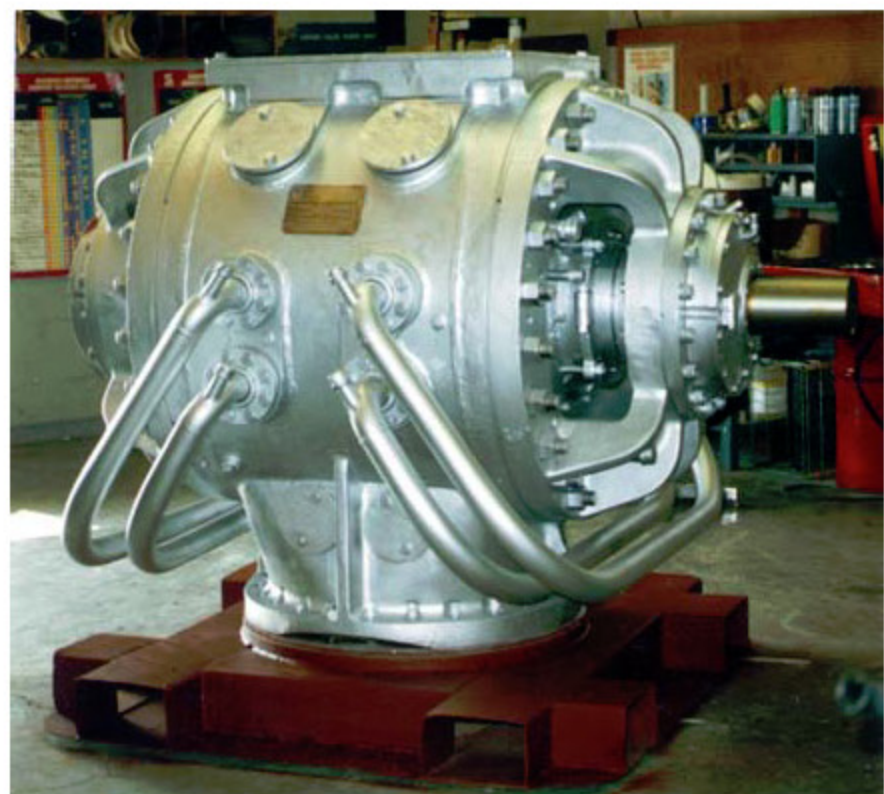


ITEM 1129

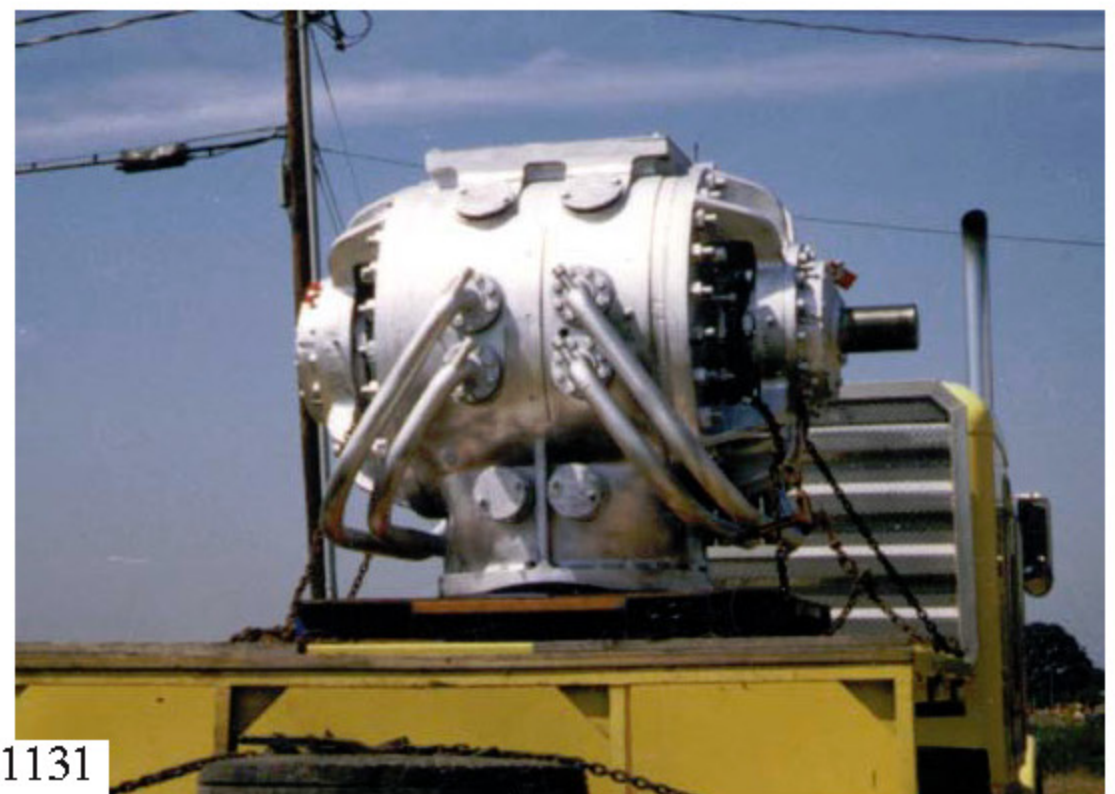


REMANUFACTURED HIGH PRESSURE ROTARY VALVE;  
FORMERLY AN ESCO STYLE UNIT;  
WITH INTERNAL MODIFICATIONS BY MST

You must act as you believe, for you will eventually believe as you act.  
Anonymous



ITEM 1131

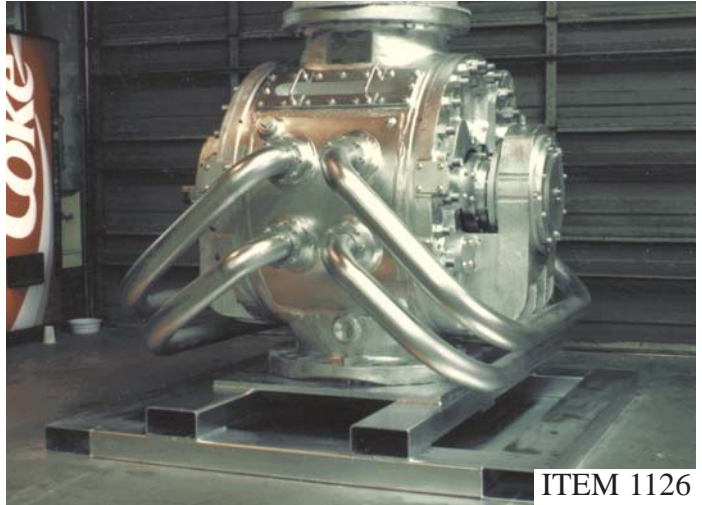


SUPER HIGH CAPACITY 36" HIGH PRESSURE ROTARY VALVE





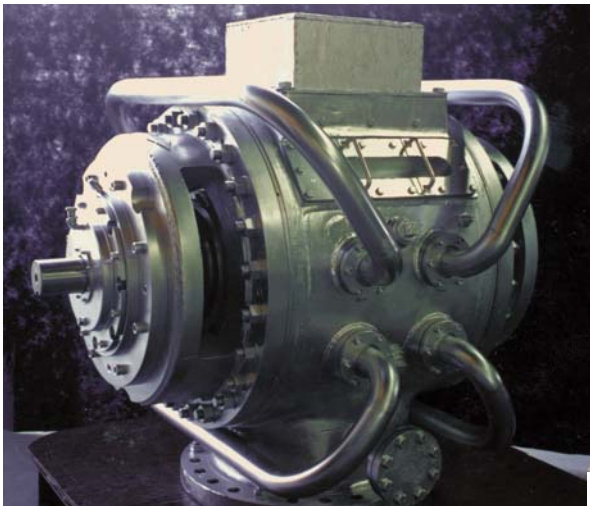
ITEM 1125



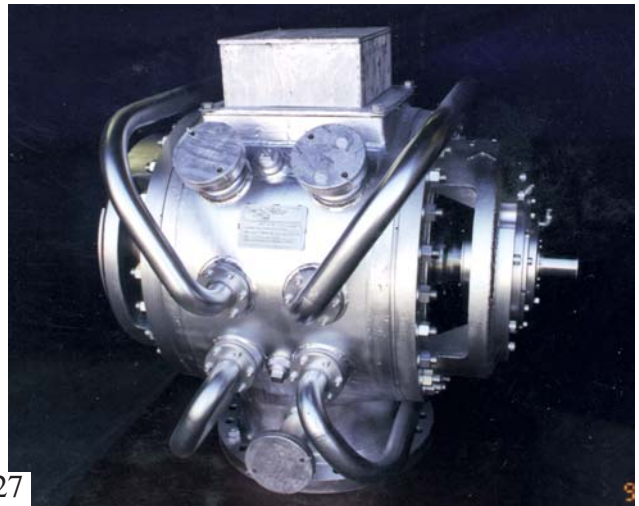
ITEM 1126

MST CUSTOM 30" HIGH PRESSURE ROTARY VALVE

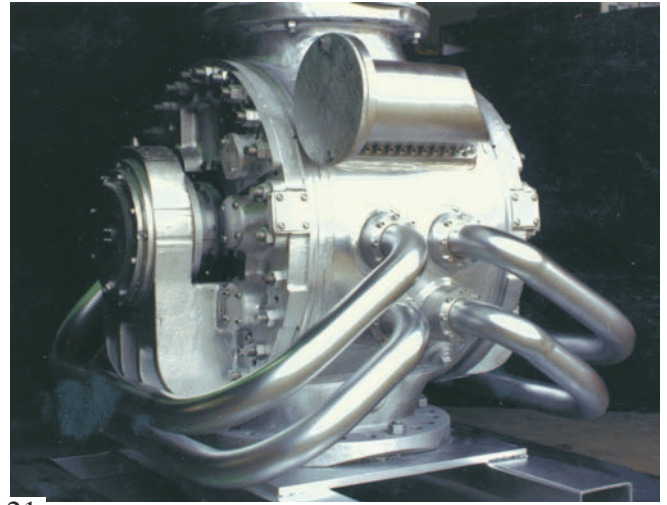
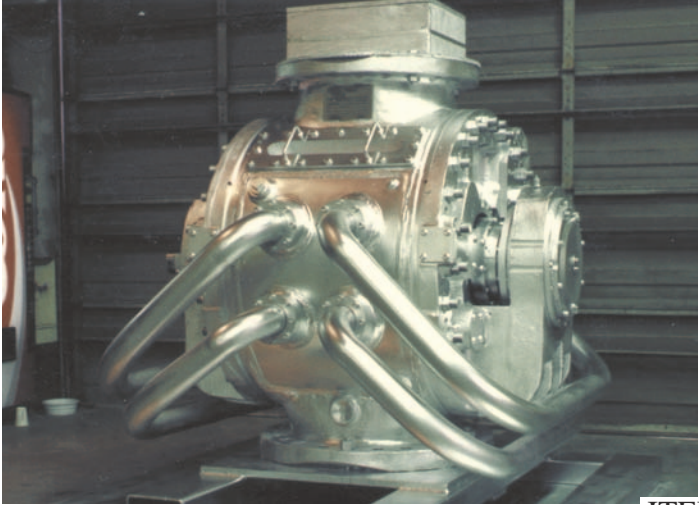
MST N2000 SERIES HIGH PRESSURE ROTARY FEEDER VALVE



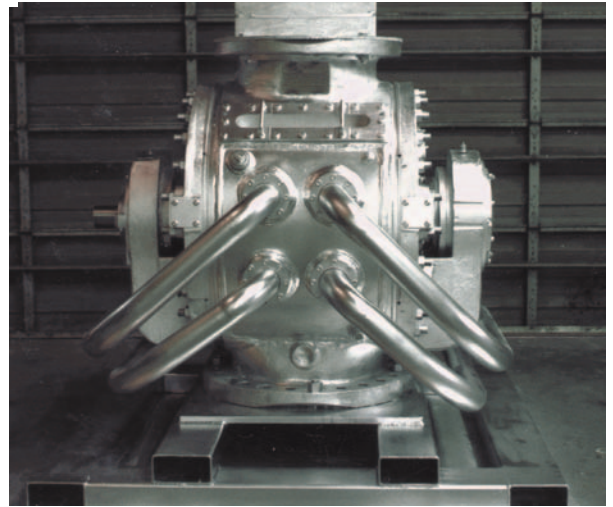
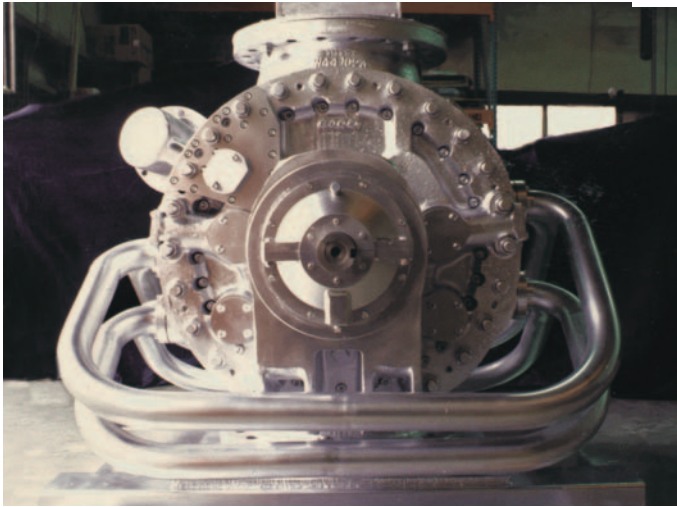
ITEM 1127



MST CUSTOM 30" HIGH PRESSURE ROTARY VALVE



ITEM 1121



MST N2000B SERIES HIGH PRESSURE  
ROTARY FEEDER VALVE

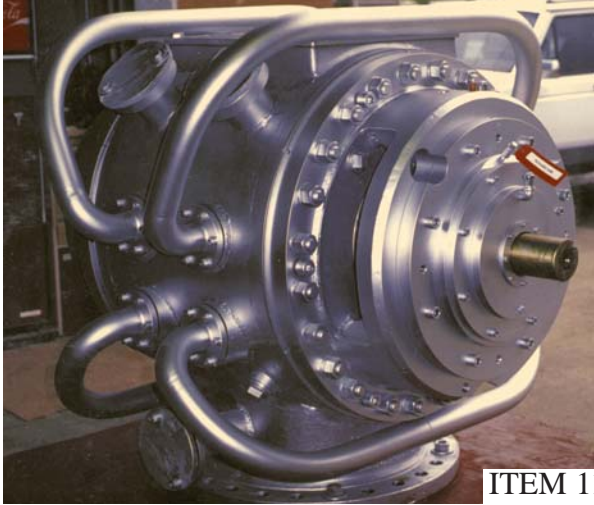
# MST CORPORATION

*Dedicated to Quality and Advancements in Metal Working Technology*

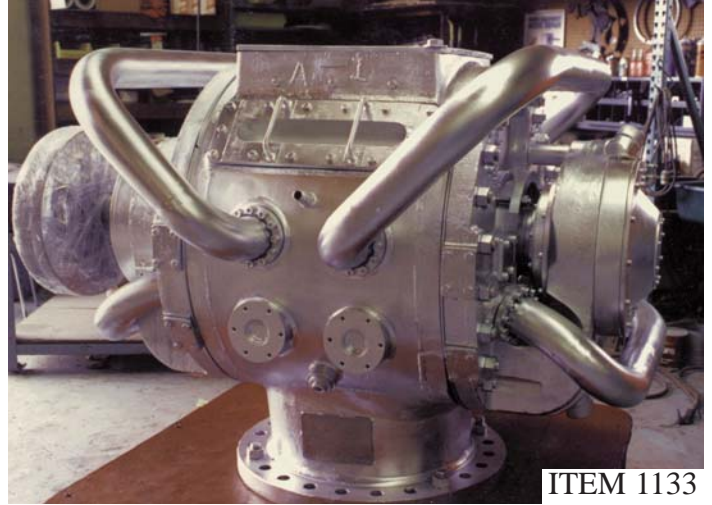
It may be true that there are two sides to every question, but it is also true that there are two sides to a sheet of fly paper, and it makes a big difference to the fly which side he chooses.

Christian Medical Society Journal, Spring 1997





ITEM 1133



ITEM 1133

30" HIGH PRESSURE ROTARY VALVE  
MANUFACTURED BY MST

HIGH PRESSURE ROTARY VALVE  
MANUFACTURED BY MST

# MST CORPORATION



ITEM 1135



SUPER HIGH CAPACITY 36" HIGH PRESSURE ROTARY VALVE



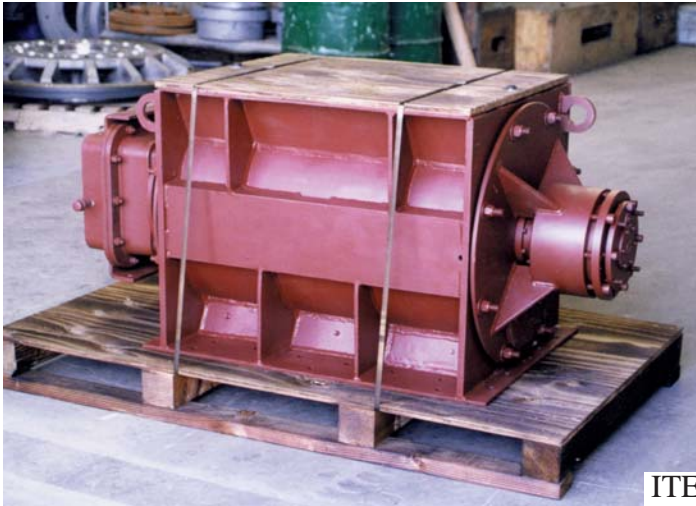


ITEM 1107



RESTORED LIME KILN ROTARY FEEDER

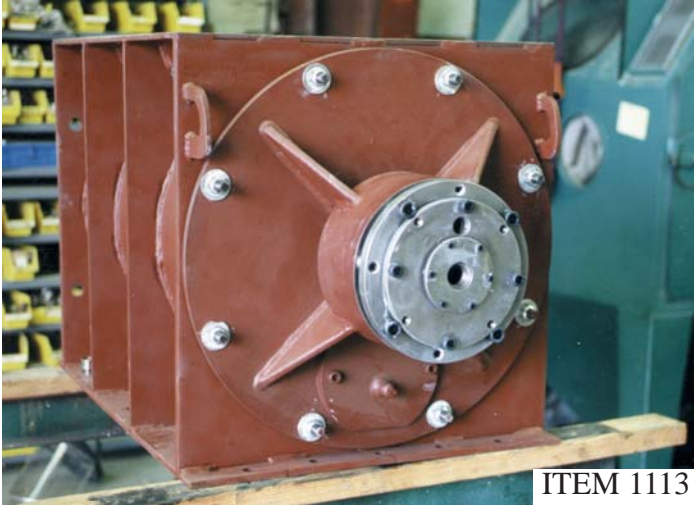
## MST CORPORATION



ITEM 1119

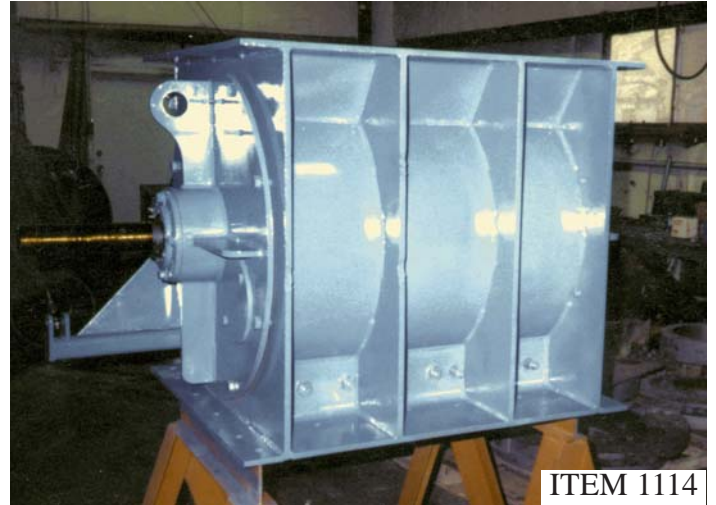


CUSTOM AIR LOCK FEEDER WITH INTEGRAL  
DRIVE SYSTEM AND COMPENSATOR THRUST



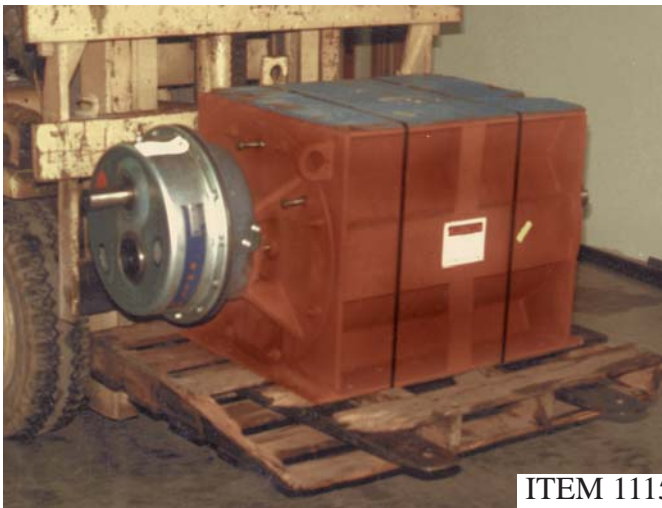
ITEM 1113

CUSTOM MST MODIFIED  
AIR LOCK FEEDER



ITEM 1114

CUSTOM MST MODIFIED  
AIR LOCK FEEDER



ITEM 1115

RESTORED RADER STYLE  
AIR LOCK FEEDER



ITEM 1116

CUSTOM AIR LOCK FEEDER WITH  
INTEGRAL DRIVE SYSTEM AND  
COMPENSATOR THRUST







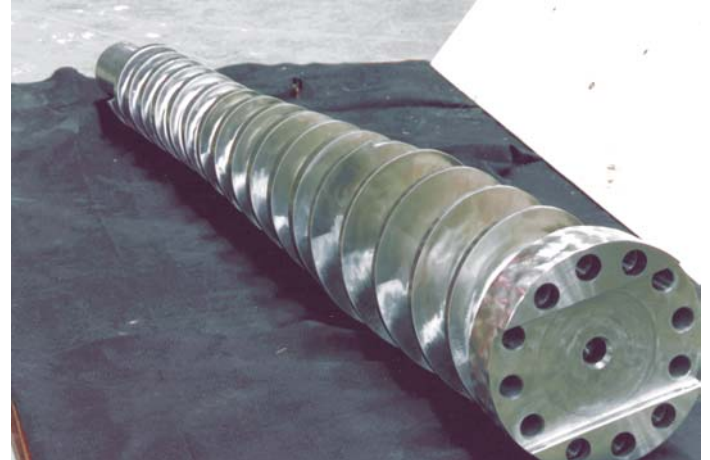
ITEM 1137



CUSTOM ULTRA HIGH PRESSURE PLUG SCREW  
FEEDER HOUSING FOR SPECIAL RESEARCH  
DEVELOPMENT APPLICATION

**MST CORPORATION**  
*Dedicated to Quality and Advancements in Metal Working Technology*

Science is the knowledge of consequences and, dependence of one fact upon another.  
Thomas Hobbes



ITEM 1141



SCREW SYSTEM MANUFACTURED BY MST FOR CUSTOM ULTRA HIGH PRESSURE  
PLUG SCREW FEEDER FOR SPECIAL RESEARCH DEVELOPMENT APPLICATION

# MST CORPORATION

*Dedicated to Quality and Advancements in Metal Working Technology*

Science is nothing but trained and organized common sense.  
Thomas Henry Huxley



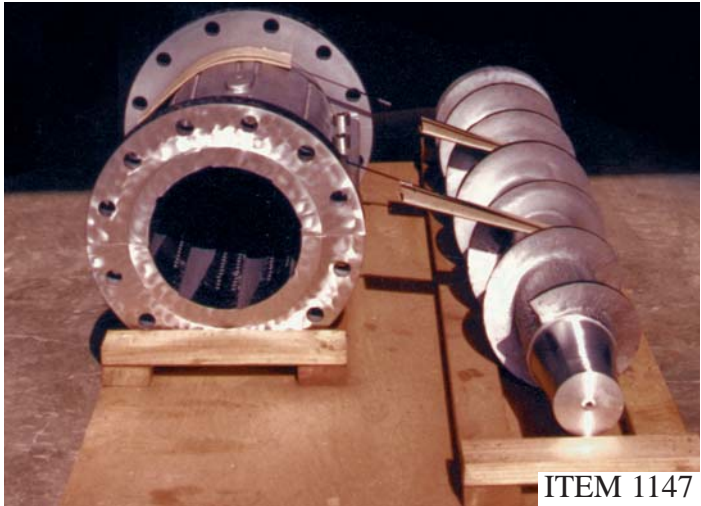


ITEM 1145



PLUG SCREW FEEDER SCREW RESTORATION

## MST CORPORATION



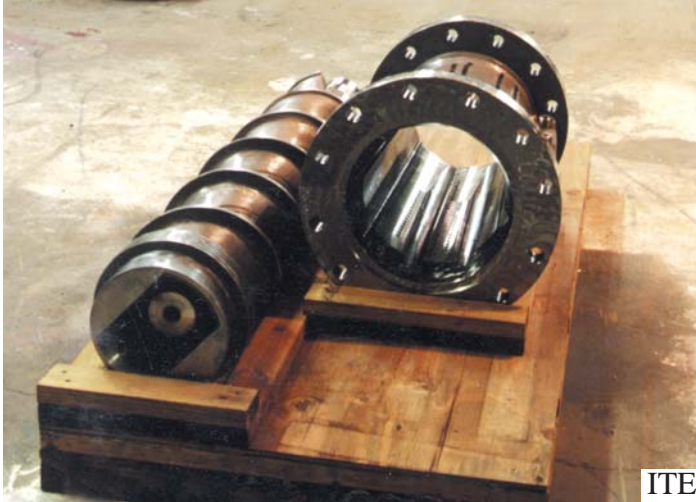
ITEM 1147

PLUG SCREW FEEDER SCREW &  
HOUSING RESTORATION



ITEM 1148

PLUG SCREW FEEDER SCREW  
RESTORATION



ITEM 1149



PLUG SCREW FEEDER SCREW AND HOUSING RESTORATION

## MST CORPORATION

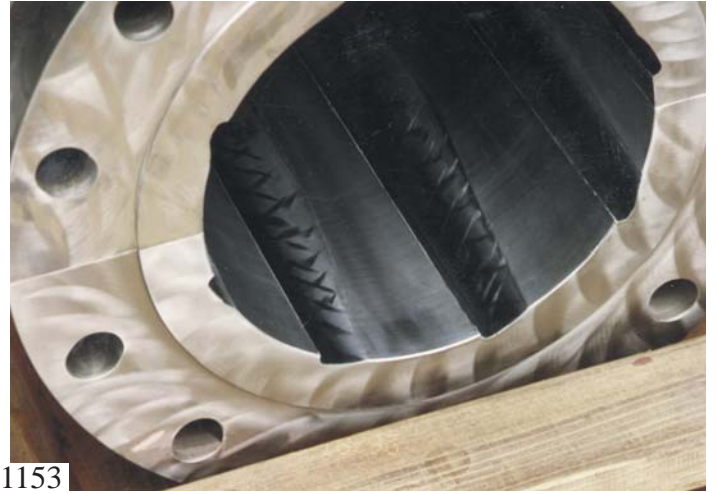
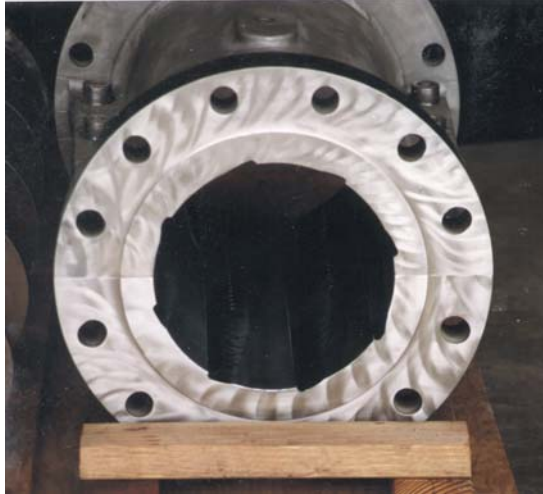


ITEM 1151

PRESTO-LOG SCREW RESTORATION



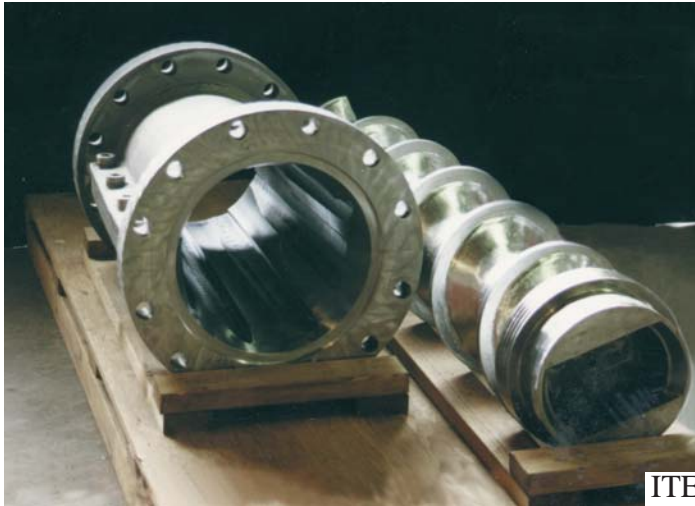




ITEM 1153

### CLOSE UP OF PLUG SCREW HOUSING

Nothing is more difficult, and more precious than to be able to decide.  
Napoleon I

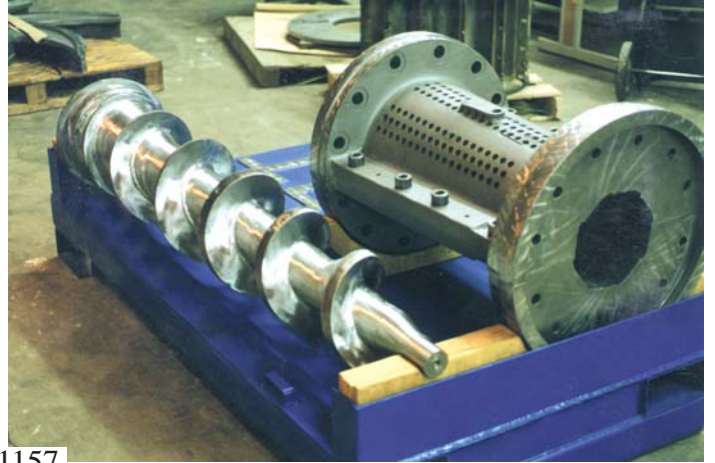


ITEM 1155

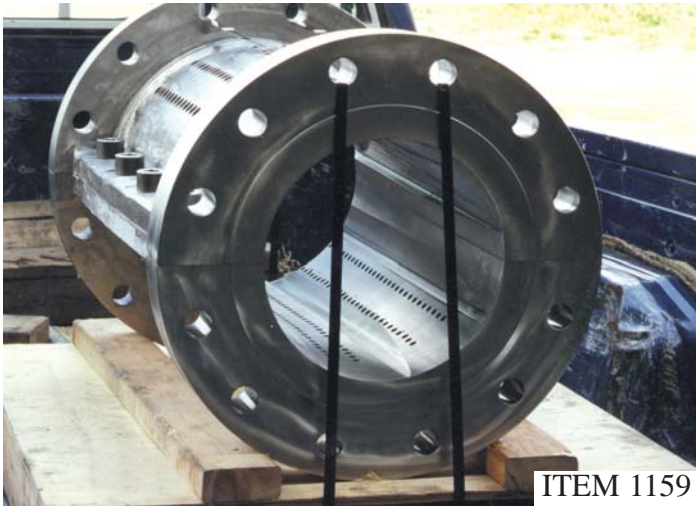
### PLUG SCREW FEEDER SCREW AND HOUSING RESTORATION



ITEM 1157



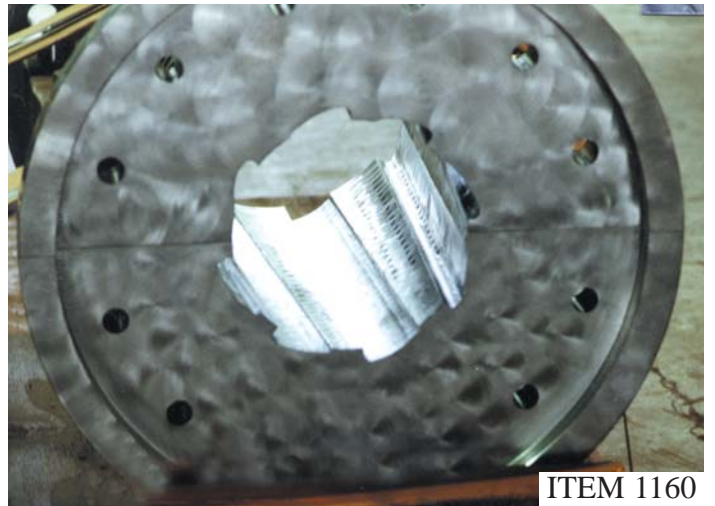
PLUG SCREW FEEDER SCREW AND HOUSING RESTORATION



ITEM 1159



PLUG SCREW FEEDER HOUSING RESTORATION

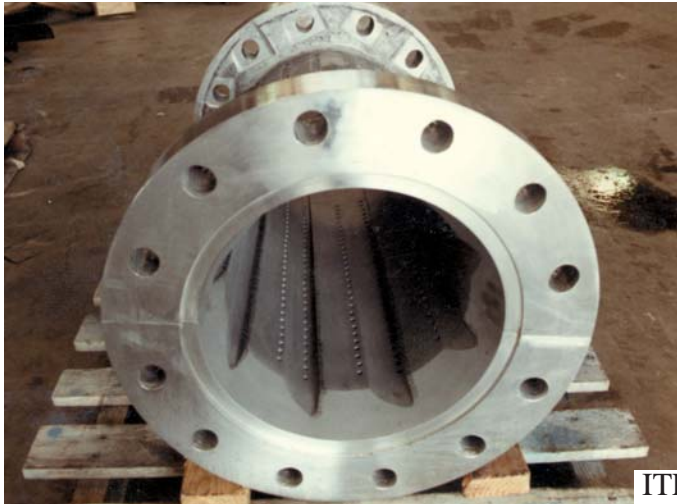


ITEM 1160

PLUG SCREW FEEDER HOUSING RESTORATION; TAPERED SCREW CORE VERSION







ITEM 1161

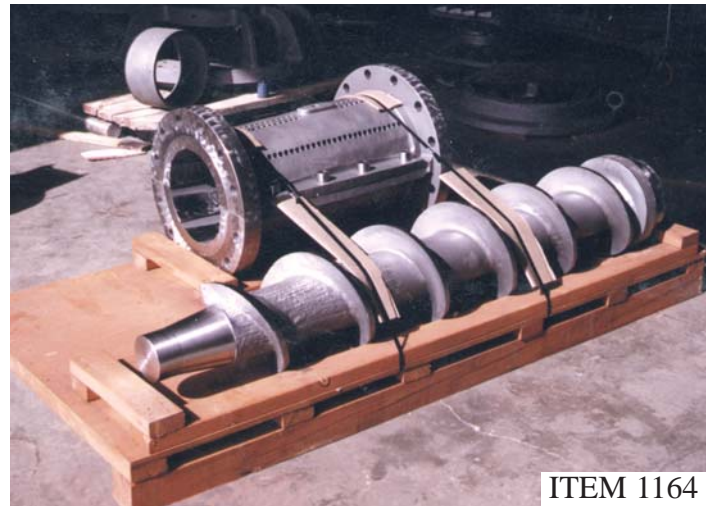


### PLUG SCREW FEEDER HOUSING RESTORATION



ITEM 1163

### CLOSE UP OF FLIGHT RESTORATION ON PLUG SCREW FEEDER SCREW



ITEM 1164

### PLUG SCREW FEEDER SCREW AND HOUSING RESTORATION





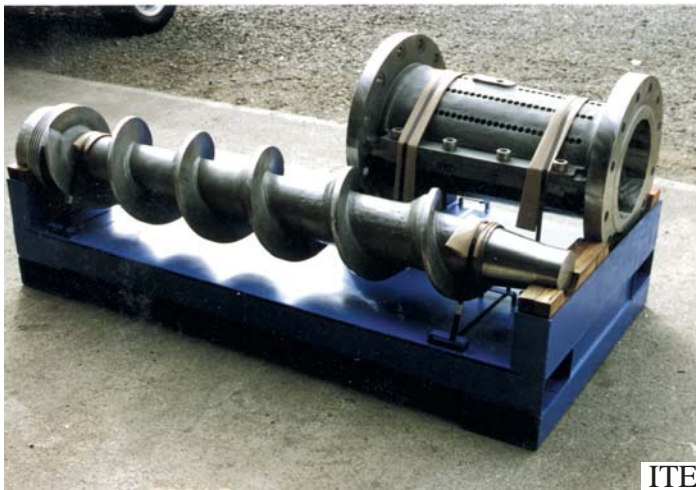
ITEM 1165

PLUG SCREW FEEDER  
SCREW RESTORATION



ITEM 1166

PLUG SCREW FEEDER  
SCREW RESTORATION



ITEM 1167

PLUG SCREW FEEDER SCREW AND HOUSING RESTORATION

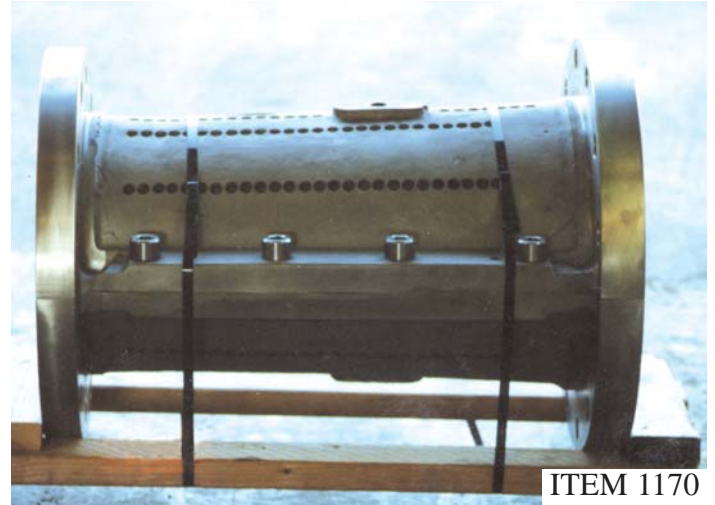






ITEM 1169

PLUG SCREW FEEDER SCREW AND  
HOUSING RESTORATION



ITEM 1170

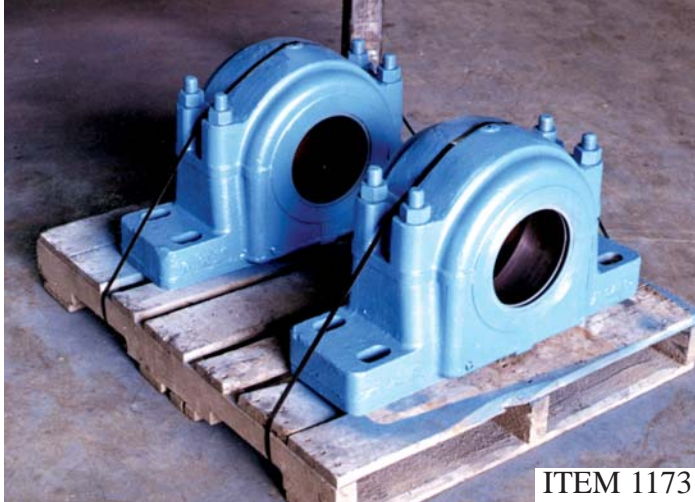
PLUG SCREW FEEDER  
HOUSING RESTORATION

# MST CORPORATION

*Dedicated to Quality and Advancements in Metal Working Technology*

The credit belongs to the man who is actually in the arena, whose face is marred by dust and sweat and blood, who strives valiantly, who errs and comes short again and again, who knows the great enthusiasm, the great devotions, and spends himself in a worthy cause, who at the best knows in the end the triumph of high achievement, and who at worst if he fails, at least, fails while daring greatly, so that his place shall never be with those cold and timid souls who know neither victory nor defeat.

Winston Churchill



ITEM 1173

PAPER MILL ROLL PILLOW BLOCK BEARING HOUSING RESTORATION



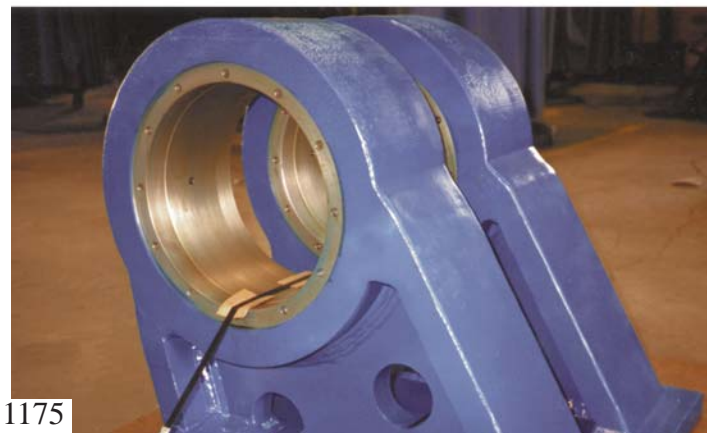
ITEM 1174

FAN PUMP HOUSING RESTORED THEN LINED WITH SPECIAL EPOXY PROTECTION SYSTEM



ITEM 1175

PAPER MILL ROLL SPECIAL BEARING MOUNT HOUSING SYSTEM REMANUFACTURED

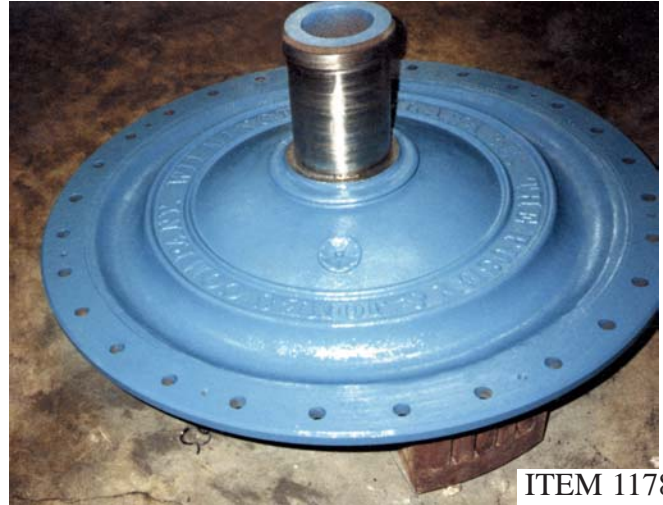






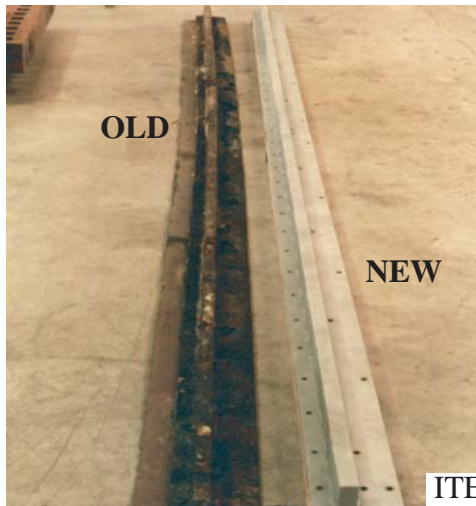
ITEM 1177

PULP DRYER SHREDDER ROLLS  
REVERSE ENGINEERED AND  
MANUFACTURED NEW BY MST



ITEM 1178

DRYER ROLL JOURNAL RESTORATION



ITEM 1179

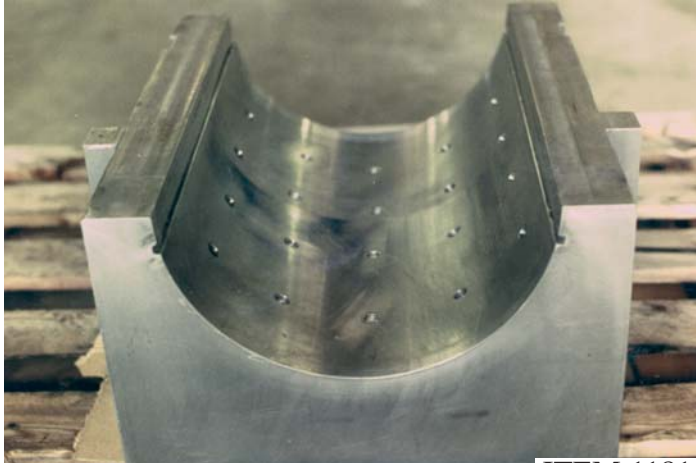
DOCTOR BLADE HOLDER  
REVERSE ENGINEERED  
AND REMANUFACTURED



ITEM 1180

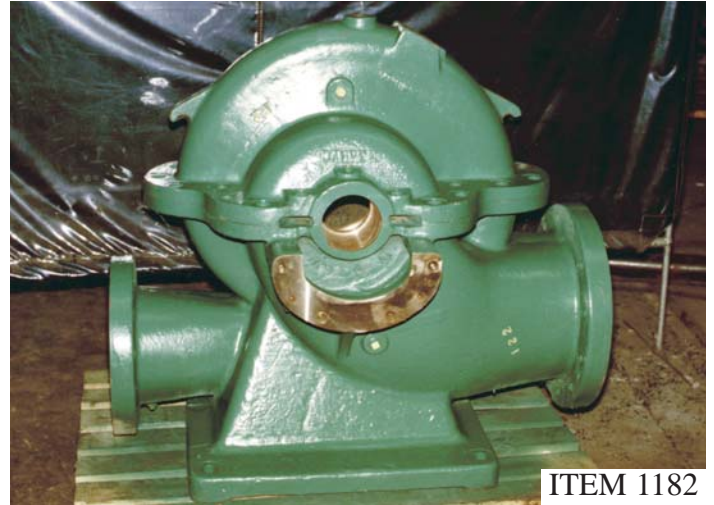
LARGE MOTOR MOUNTING  
FRAME FABRICATION





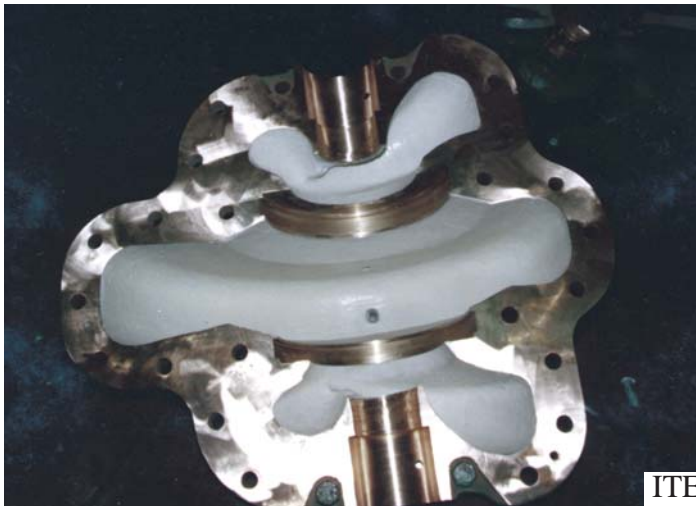
BABBITT LINING NOT, SHOWN **ITEM 1181**

SPECIAL CUSTOM WATER COOLED  
BABBITT BEARING HOUSING  
DESIGNED AND MANUFACTURED  
BY MST



**ITEM 1182**

BRONZE PROCESS PUMP  
RESTORATION AND  
SPECIAL EPOXY LINING;  
SUBASSEMBLY VIEW



**ITEM 1183**



BRONZE PROCESS PUMP RESTORATION AND SPECIAL EPOXY LINING





ITEM 1185



VIBRATING SCREEN FRAME; REDESIGNED AND MANUFACTURED BY MST;  
DESIGNED TO PREVENT IN-SERVICE CRACKING



ITEM 1187



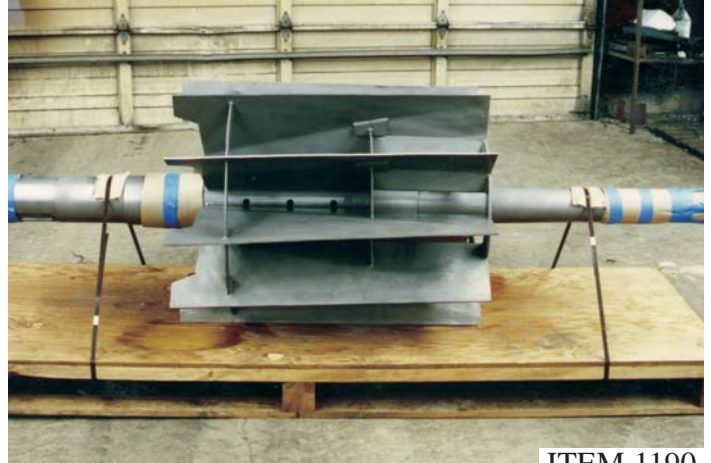
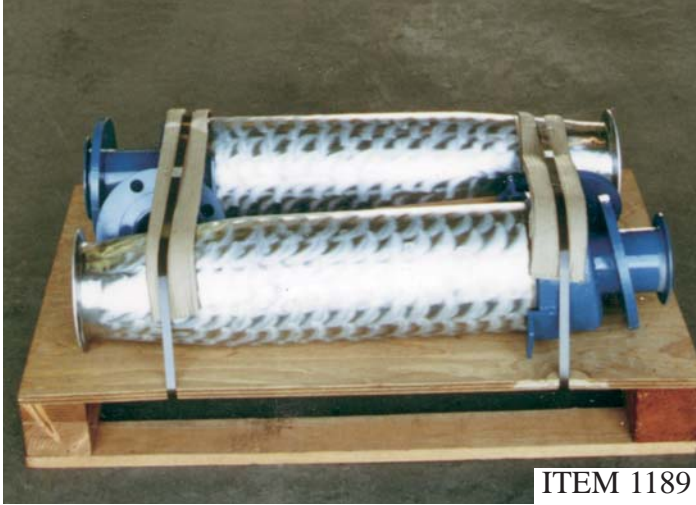
CENTRI-CLEANERS WITH NEW SS  
CONE SECTIONS



ITEM 1188

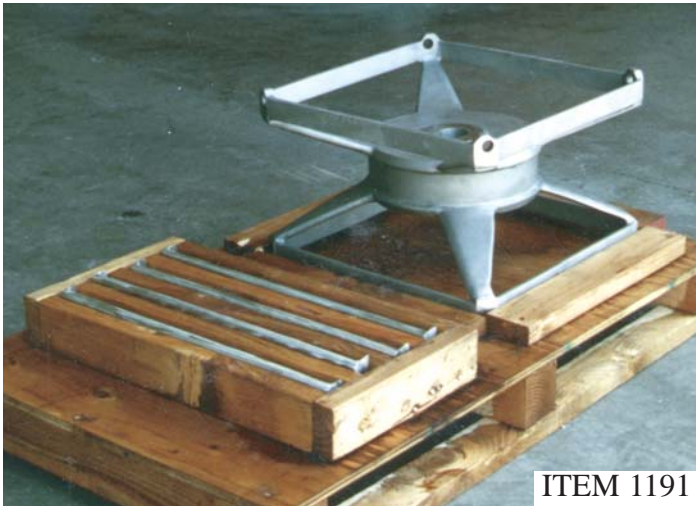
ROUND SCREEN ROTOR BARS  
RESTORED AND HIGH ENERGY  
PULPER ROTOR RESTORATION.  
MST HAS ALSO MANUFACTURED  
THESE ROTORS NEW AS  
REPLACEMENTS FOR OEM UNITS





CENTRI-CLEANERS RESTORATIONS

HORIZONTAL SEPARATOR SCREEN  
ROTOR RESTORATION



ROUND SCREEN FOIL BAR ROTOR  
RESTORATION AND UPGRADE



ROUND SCREEN FOIL BAR ROTOR  
RESTORATION AND UPGRADE







ITEM 1193

ROUND SCREEN RESTORATION



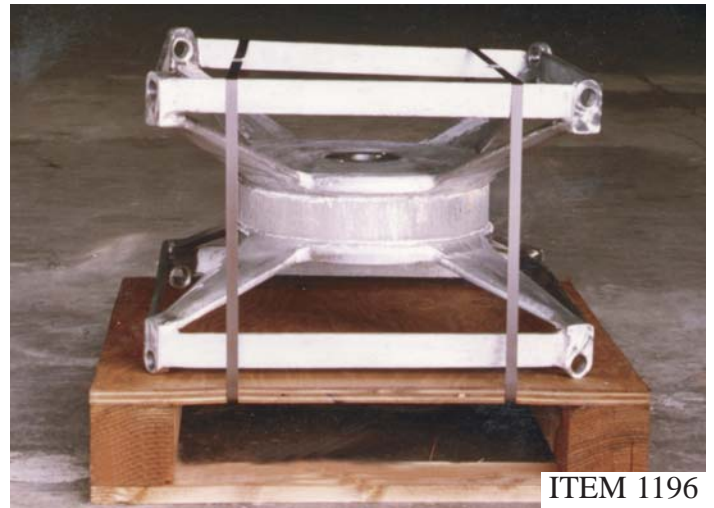
ITEM 1194

PULPER ROTOR DRIVE HUB RESTORATION AND REMANUFACTURE



ITEM 1195

ROUND SCREEN RESTORATION



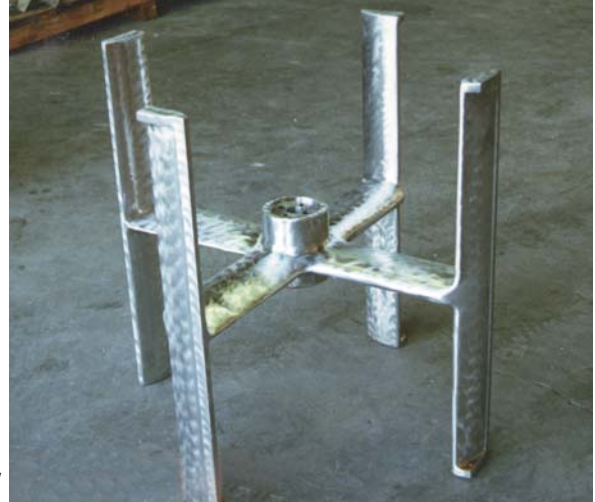
ITEM 1196

ROUND SCREEN FOIL BAR ROTOR RESTORATION AND UPGRADE





ITEM 1197



## FINCKH SCREEN ROTOR RESTORATION

Management addressed toward optimization of a system would offer improvement. A system must have an aim. Without an aim, there is no system.

W. Edwards Deming



ITEM 1199

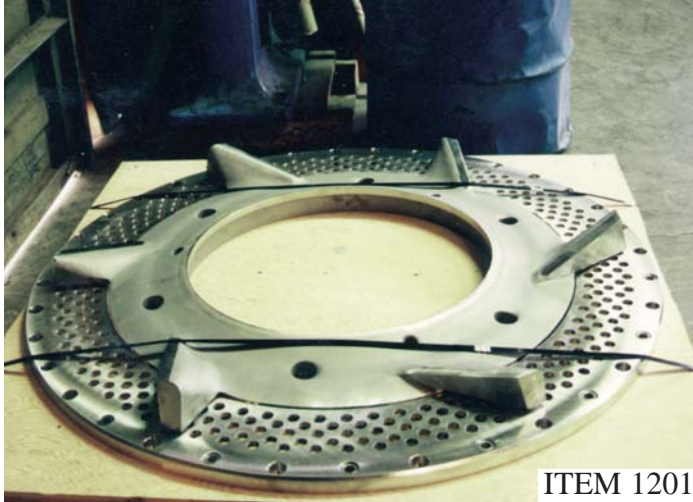
NEW SET OF SHREDDER PLATES  
BY MST



ITEM 1200

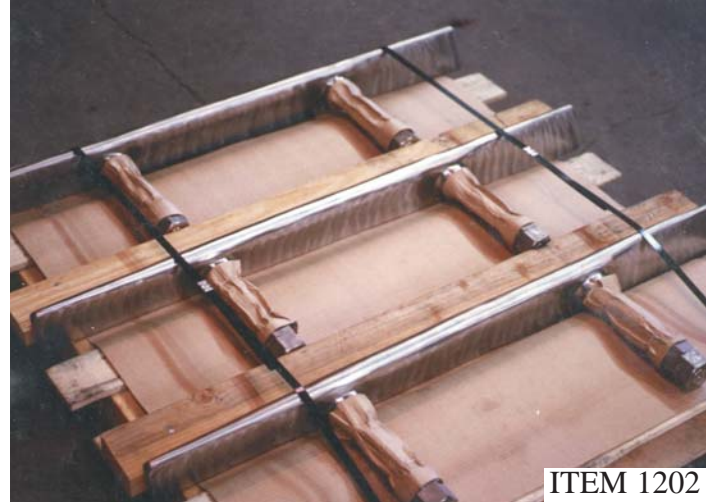
LARGE PULPER ROTOR UPGRADE  
AND REDESIGN ON NEW OEM UNIT  
BEFORE INITIAL USE





ITEM 1201

**PULPER ROTOR AND EXTRACTION  
PLATE RESTORATION**



ITEM 1202

**SET OF ROUND SCREEN FOIL BARS;  
RESTORED COMPLETE**

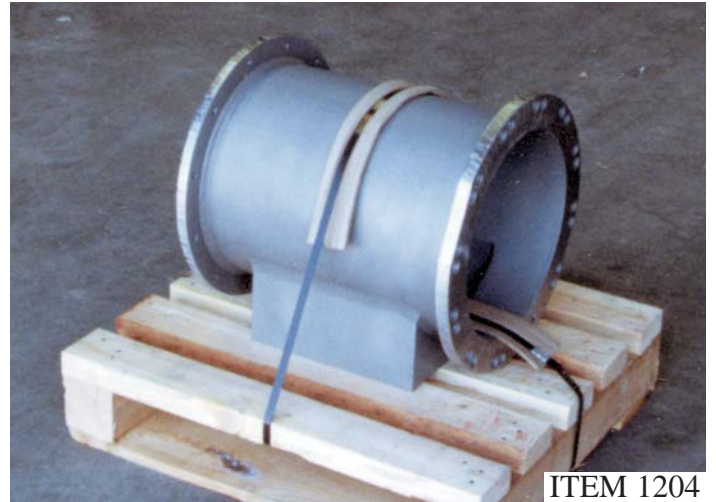
...mathematics is not just another language. Mathematics is a language plus reasoning; it is like a language plus logic. Mathematics is a tool for reasoning.

Richard Feynman



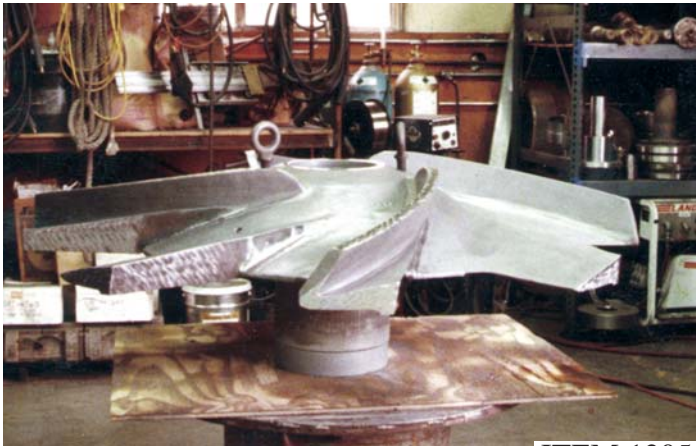
ITEM 1203

**SET OF ROUND SCREEN FOIL BARS  
RESTORED COMPLETE**



ITEM 1204

**INTERNAL LOAD SENSOR HOUSING  
FOR SPROUT-BAUER REFINER;  
MANUFACTURED NEW**



ITEM 1205

RESTORED AND MODIFIED  
PULPER ROTOR



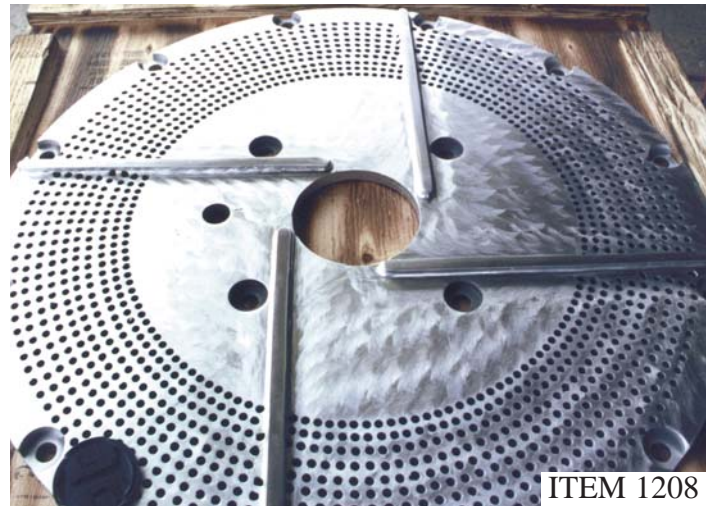
ITEM 1206

EXTRACTION PLATE RESTORATION



ITEM 1207

SHREDDER ANVIL AND ROTOR  
MANUFACTURED NEW, BY MST



ITEM 1208

RESTORATION OF EXTRACTION  
PLATE SUBASSEMBLY

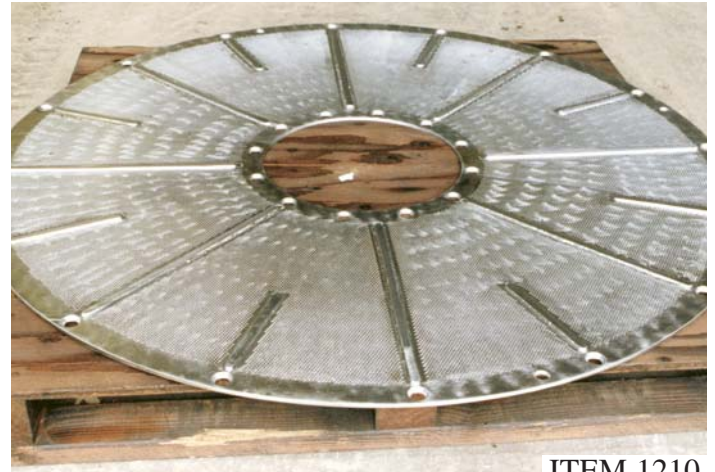






ITEM 1209

RESTORATION AND BAR  
REPLACEMENT OF  
SEPARATOR SCREEN



ITEM 1210

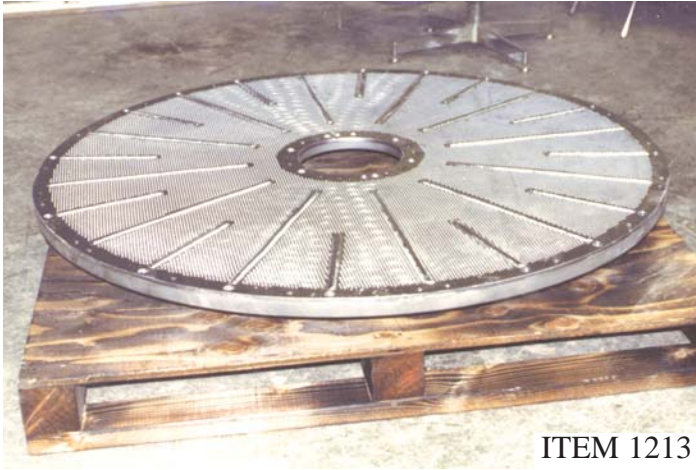
RESTORED EXTRACTION PLATE USED  
IN RECYCLING SYSTEM



ITEM 1211

HIGH POWER PULPER ROTOR RESTORATION USED IN RECYCLE SYSTEM





ITEM 1213

VOITH TURBO ROTOR EXTRACTION  
PLATE AND FRAME ASSEMBLY



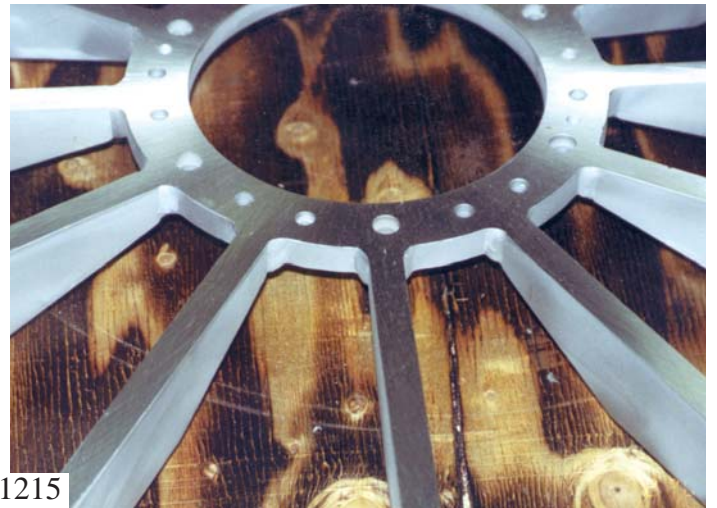
ITEM 1214



SHREDDER ANVIL



ITEM 1215



EXTRACTION PLATE FRAME RESTORATION





ITEM 1217

SLOTTED SCREEN BASKET RESTORATION



ITEM 1218

SHREDDER ANVIL MANUFACTURED



ITEM 1219

MANUFACTURE AND UPGRADE SEPARATOR ROTOR



ITEM 1220

SEPARATOR ROTOR AND HEAD SUBASSEMBLY RESTORATION





ITEM 1221

### SHREDDER ROTOR AND ANVIL



ITEM 1222

### ROUND SCREEN ROTOR RESTORATION

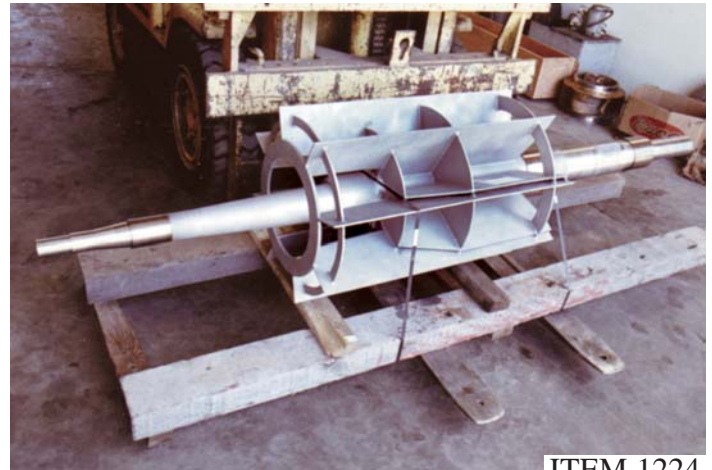
We know that each height, each step, must be gained by patient, laborious toil, and that wishing cannot take the place of working.

Edward Whympere



ITEM 1223

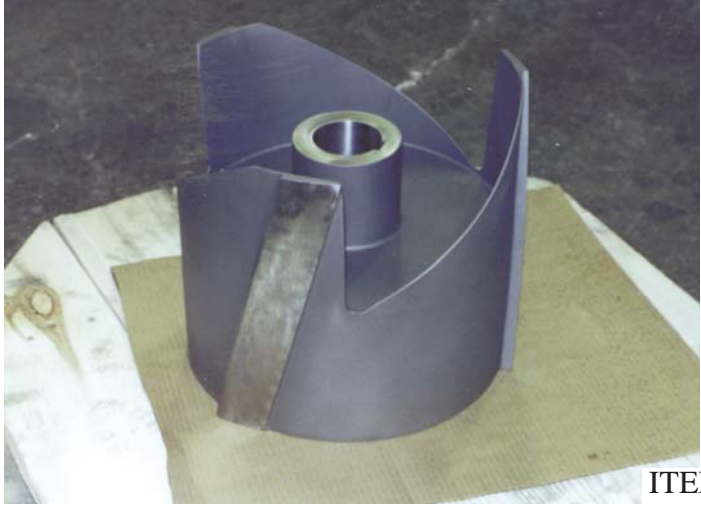
### ROUND SCREEN AND ROTOR RESTORATION



ITEM 1224

### HOOPER ROUND SCREEN ROTOR RESTORATION





ITEM 1225



### SEPARATOR ROTOR RESTORATION



ITEM 1227

### REFINER PLATE RESTORATION



ITEM 1228

### LOBED ROTOR RESTORATION AND NEW TOP SEPARATOR





ITEM 1229

PULPER ROTOR RESTORATION



ITEM 1230

SEPARATOR ROTOR AND HUB RESTORATION



ITEM 1231

PULPER ROTOR AND EXTRACTION PLATE

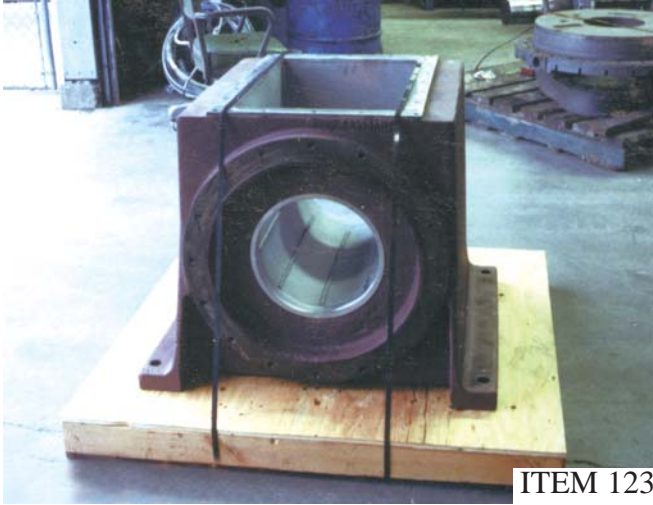


ITEM 1232

NEW SHREDDER MANUFACTURED







ITEM 1233

REFINER IN-FEED SCREW HOUSING



ITEM 1234

NEW, REDESIGNED, VIBRATION (KNOTTER BASKET) FRAME



ITEM 1235

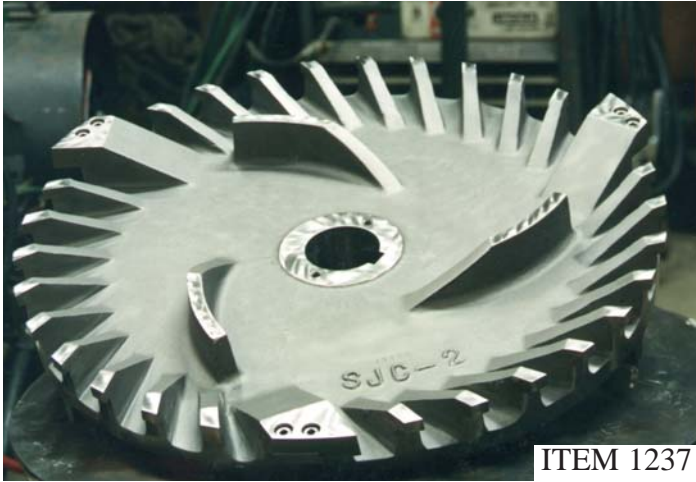
EXTRACTION PLATE RESTORATION



ITEM 1236

CENTR-CLEANER TUBE REPLACEMENT AND UPGRADE





ITEM 1237

NEW SIZE 2 SHREDDER



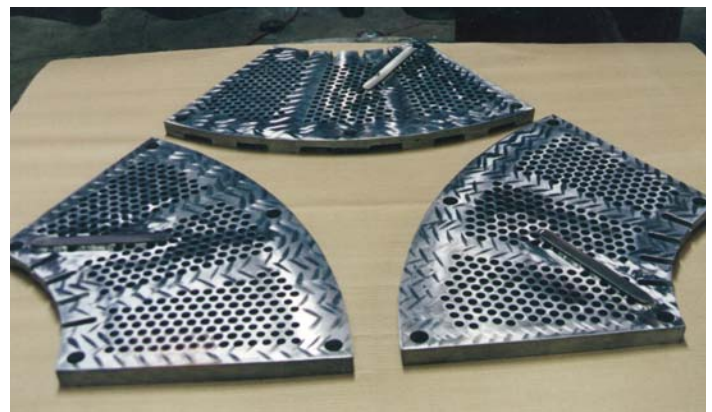
ITEM 1238

NEW SIZE 3 SHREDDER



ITEM 1239

SEPARATOR ROTOR AND HUB



ITEM 1240

RESTORATION OF EXTRACTION PLATE SEGMENTS







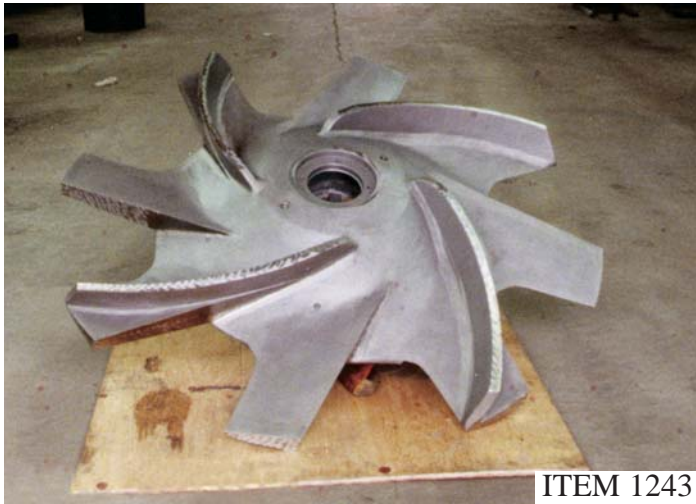
ITEM 1241

PULPER ROTOR AND  
EXTRACTION PLATE



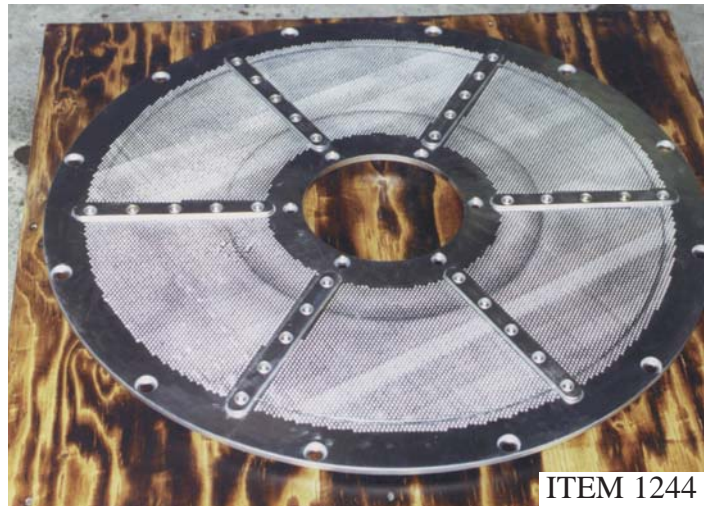
ITEM 1242

SIZE 1 SHREDDER, NEW



ITEM 1243

PULPER ROTOR RESTORATION



ITEM 1244

DIABLO EXTRACTION PLATE  
RESTORATION





ITEM 1245

PULPER ROTOR EXTRACTION PLATE



ITEM 1246

NEW ROUND SCREEN LOBED ROTOR SUBASSEMBLY



ITEM 1247

PULPER ROTOR IN RECYCLING SYSTEM UPGRADED FOR 200 EXTRA HORSEPOWER OPERATION



ITEM 1248

TURBO ROTOR AND HUB SUBASSEMBLY







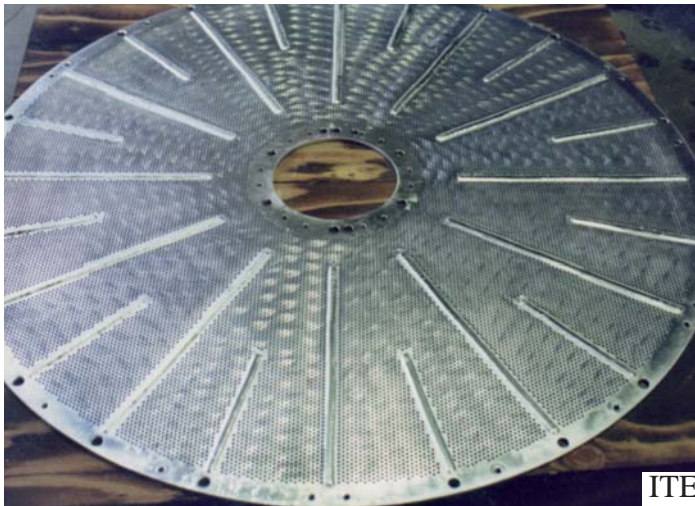
ITEM 1249

### EXTRACTION PLATE SUBASSEMBLY RESTORATION

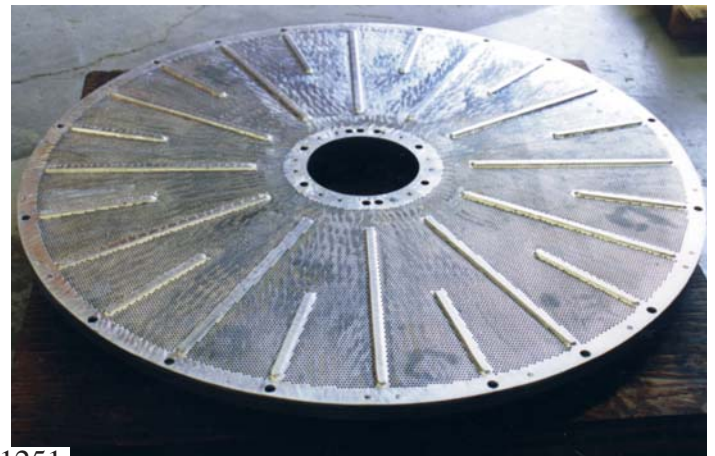


ITEM 1250

### SEGMENTAL EXTRACTION PLATE SET RESTORATION

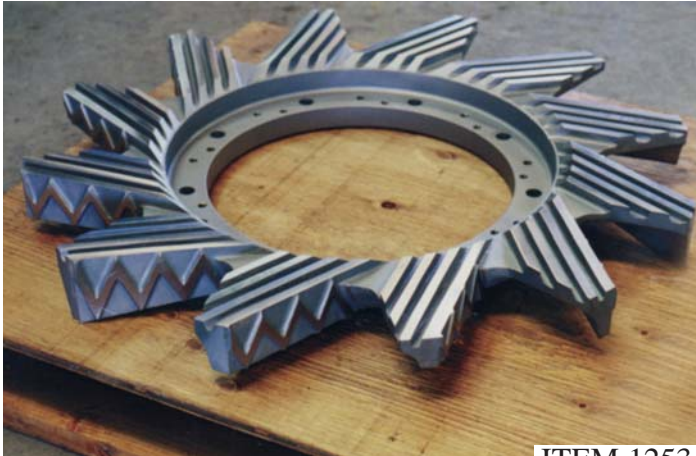


ITEM 1251



### TURBO SEPARATOR EXTRACTION PLATE RESTORATION





ITEM 1253

PULPER ROTOR COMPLETE RESTORATION AND OVERLAY



ITEM 1254

TURBO SEPARATOR ROTOR AND HUB SUBASSEMBLY



ITEM 1255

DIABLO SCREEN ROTOR

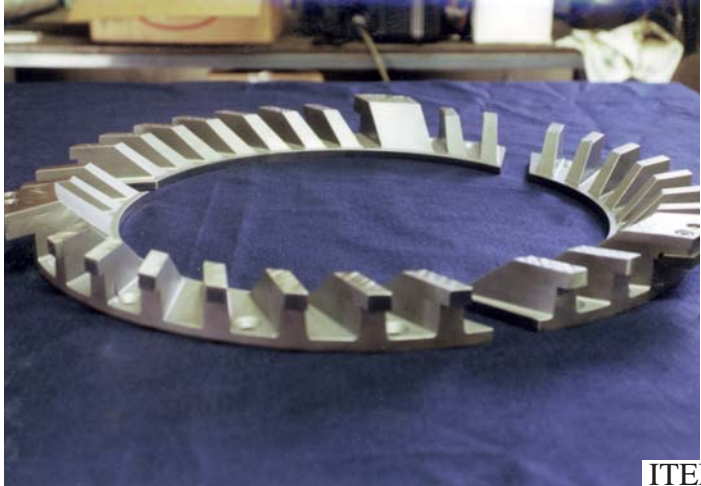


ITEM 1256

TURBO SEPARATOR ROTOR AND HUB SUBASSEMBLY RESTORATION







ITEM 1257

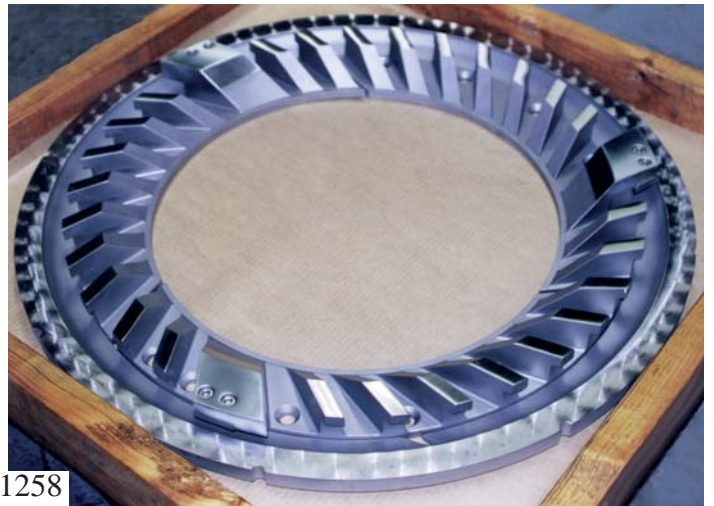


SHREDDER ROTOR MANUFACTURED AS TRI-SEGMENTAL SYSTEM;  
SHOWN WITH CUTTER SET

If I take care of my character, my reputation will take care of itself.  
Dwight L. Moody



ITEM 1258



CLOSE UP AND OVERVIEW OF NEW ROTOR AND ANVIL



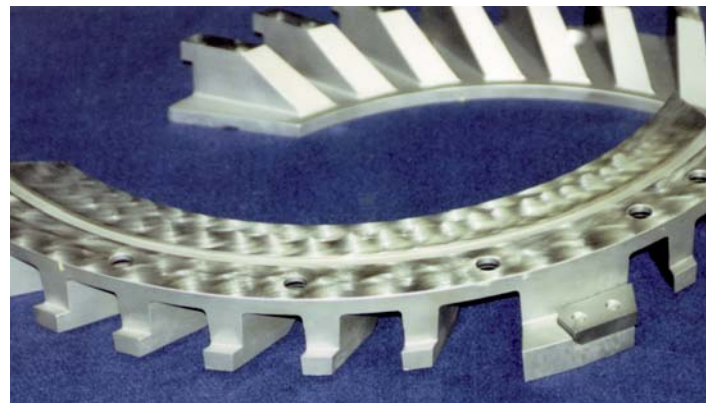
ITEM 1259



NEW SIZE 1 SHREDDER ANVIL  
TOP (UPPER SIDE) VIEW AND BOTTOM (UNDER SIDE) VIEW



ITEM 1260



ITEM 1261

NEW SHREDDER ANVIL, SIZE 2



NEW SEGMENTAL SHREDDER SET





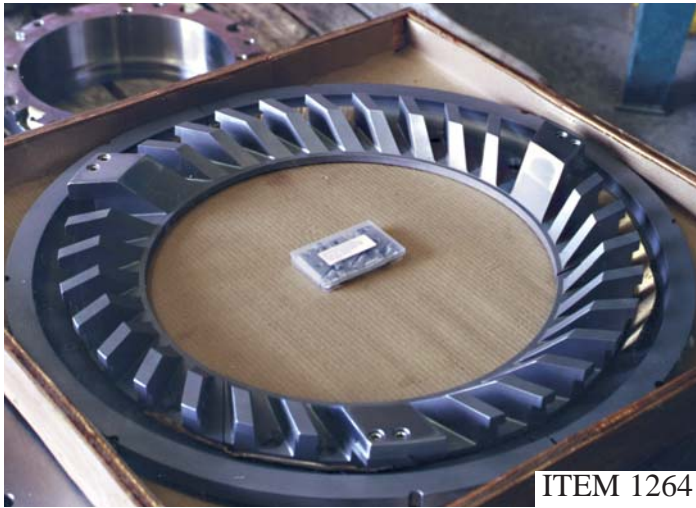
ITEM 1262

PULVERIZER ROTOR RESTORATION



ITEM 1263

TORNADO ROTOR RESTORATION



ITEM 1264

SIZE 3 SHREDDER ANVIL AND CUTTER SET, NEW



ITEM 1265

ROTOR AND HOUSING ASSEMBLY





ITEM 1266

RESTORED DIABLO ROTOR



ITEM 1267

PULPER ROTOR REMANUFACTURED  
WITH EXTENDED HUB FEATURE

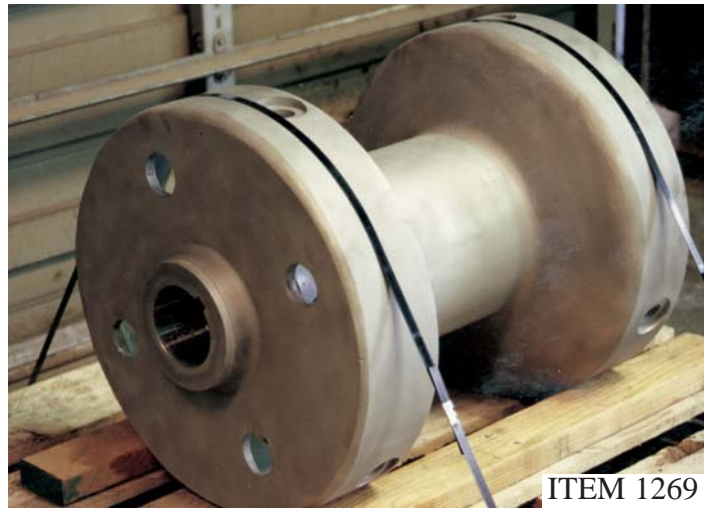
He that is faithful in that which is least is faithful also in much; and he that is unjust in the least is unjust also in much.

Jesus, Luke 16:10



ITEM 1268

TURBO ROTOR AND HUB ASSEMBLY



ITEM 1269

ROUND SCREEN ROTOR  
FOIL BAR ROTOR





ITEM 1270

OLD STYLE VOITH TURBO ROTOR RESTORATION



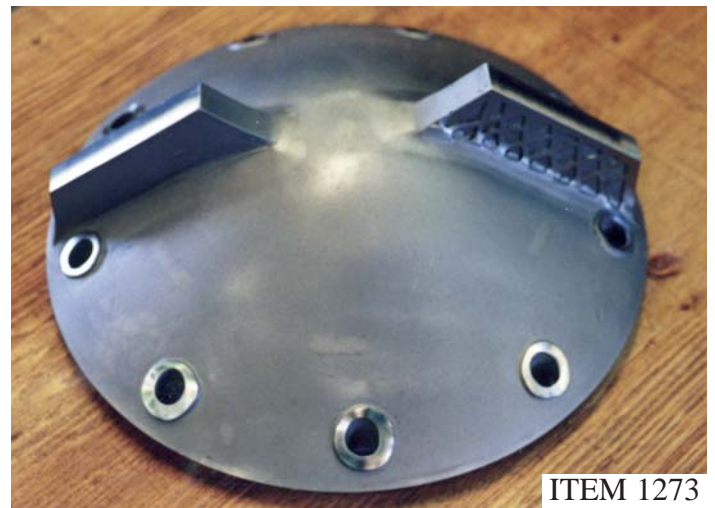
ITEM 1271

REFINER IN-FEED LOAD SENSOR HOUSINGS RESTORATION  
CODE WELDED



ITEM 1272

EXTRACTION PLATE FRAME, RESTORATION AND UPGRADE

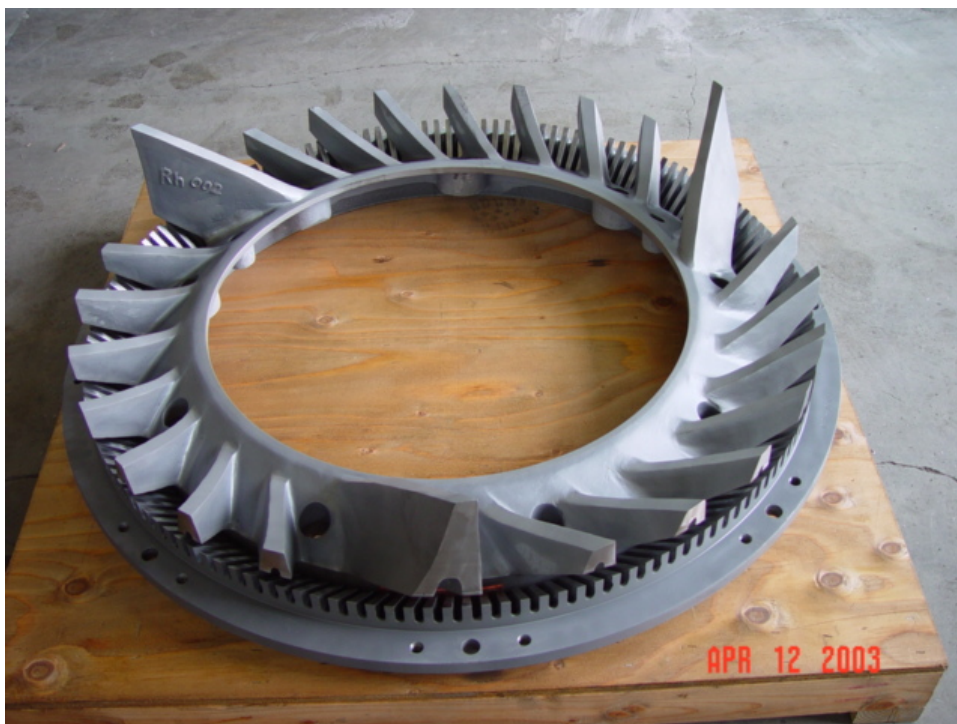


ITEM 1273

PULPER ROTOR CENTER HUB SECTION RESTORATION AND BAR REPLACEMENT



# SLUSH MAKERS ITEM 1424



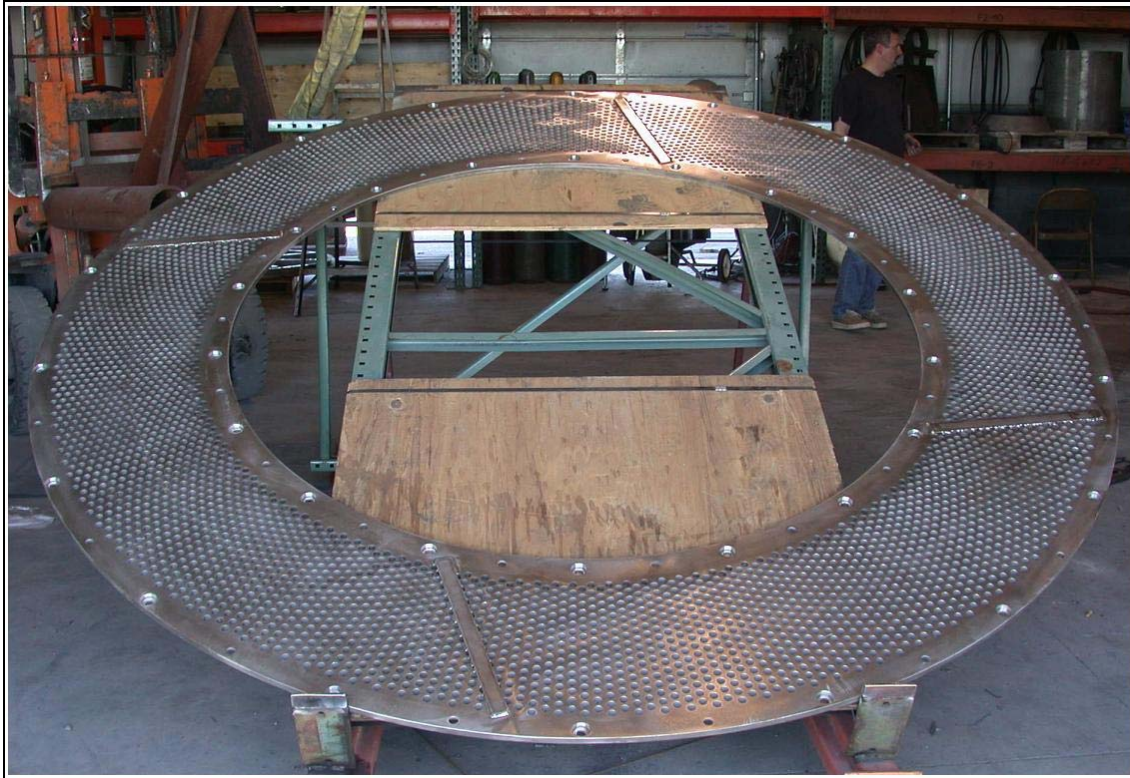
**RESTORE OR MANUFACTURE NEW**



**DEFIBRATING RINGS FOR SLUSH MAKER ROTORS**



**PULPERS** ITEM 1425

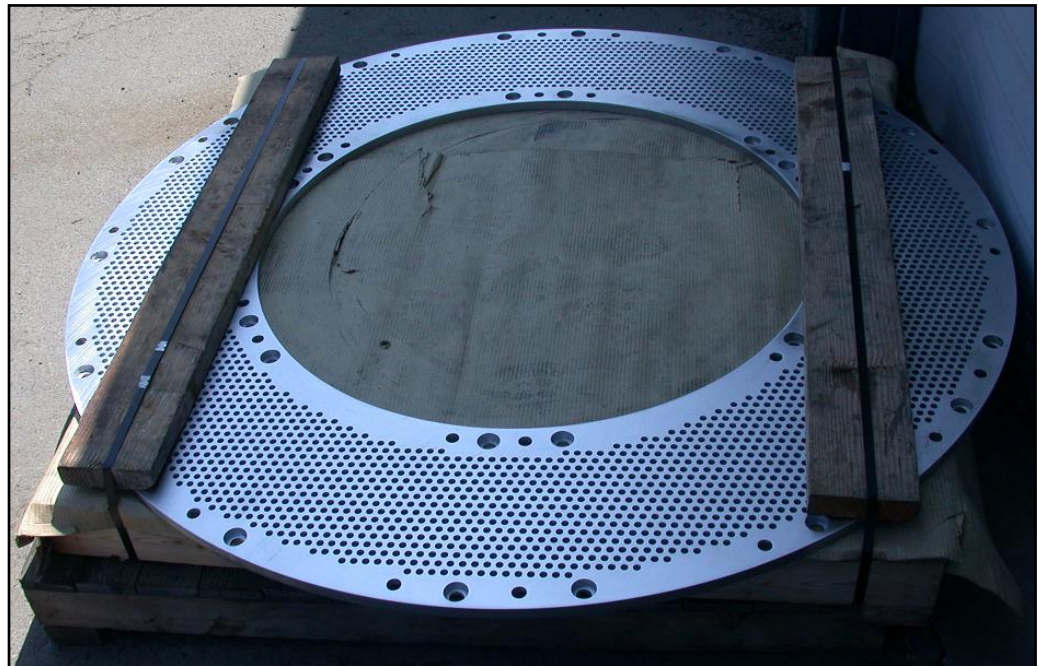


**106" DIAMETER EXTRACTION PLATE FOR SECONDARY FIBER /OCC  
RESTORE OR MANUFACTURE NEW**

ITEM 1426

**SHARK  
EXTRACTION  
PLATE**

MFG NEW







ITEM 1427



ITEM 1428

**RESTORED 32" HYDRAPURGE ROTOR & MFG NEW EXT. PLATE**



**ULTRA III SCREEN &  
ROTOR ASSEMBLY MST  
UPGRADE /RESTORE**

**BEARING CARTRIDGE,  
HOUSING COMPONENTS,  
BASE, AND ENLARGED  
THE ACCEPTS OUTLET**



ITEM 1429





ITEM 1430



Reject Paddles

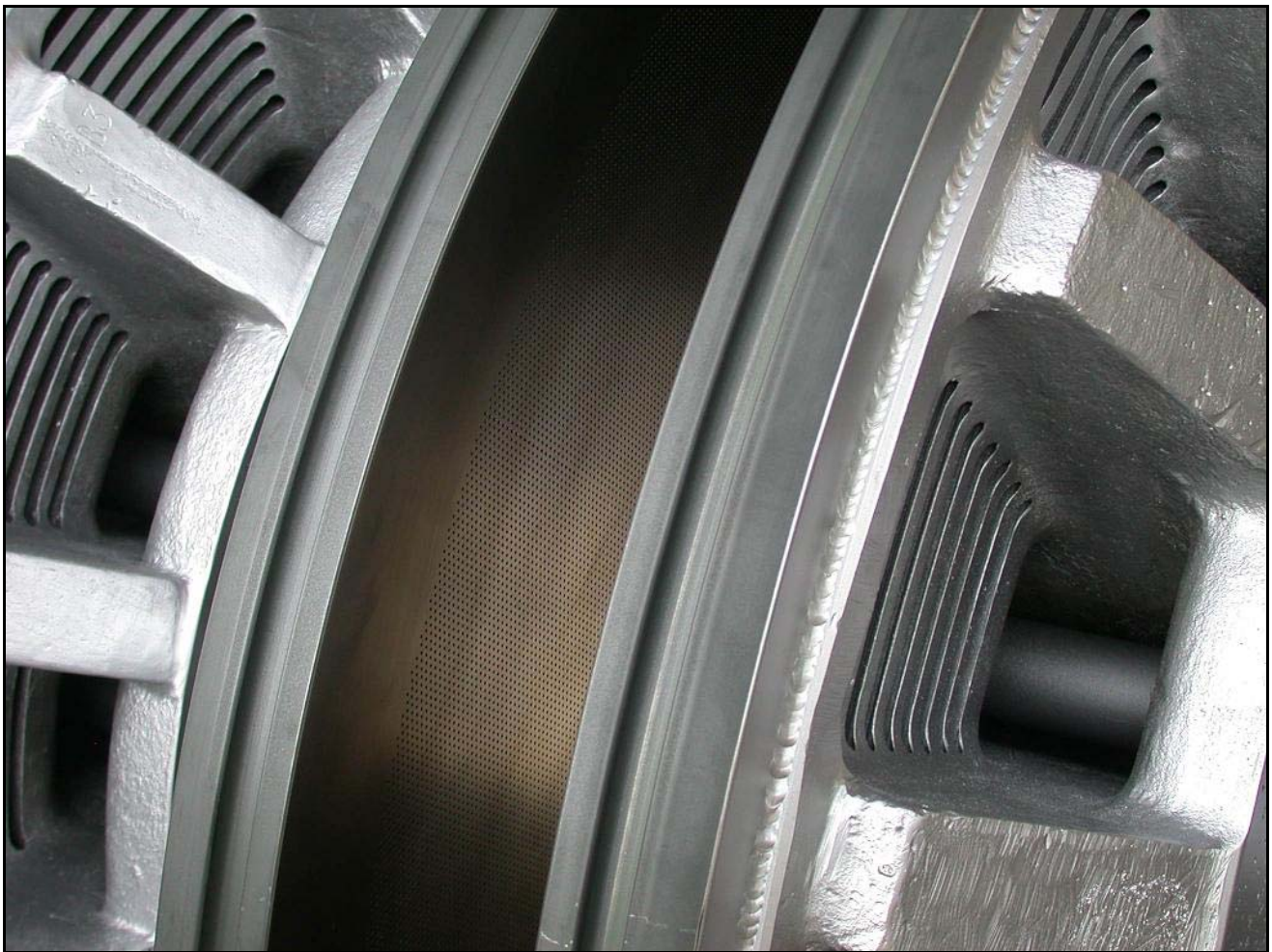
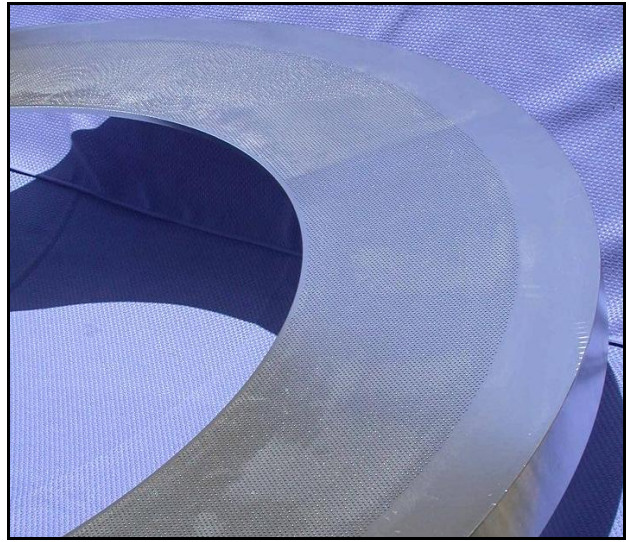
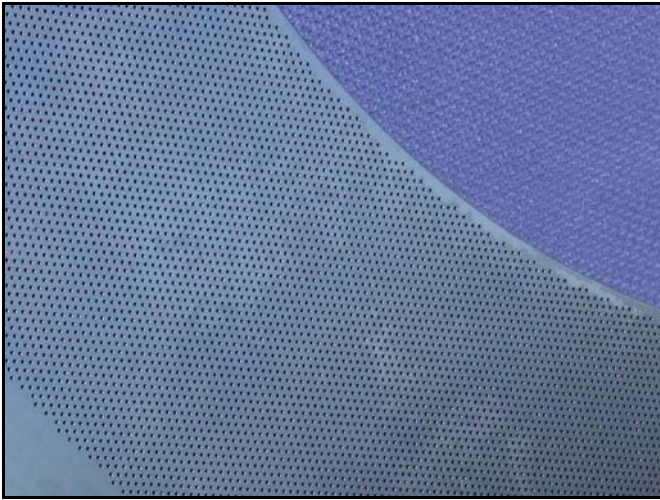


Orifice Plate

---

**CSM-12 COMBISORTER SUBASSEMBLY ROTOR ELEMENTS**





ITEM 1431

**CUSTOM DEWATERING SCREENS: MFG NEW USING TYPE 254SMO AND DRILLING JUST OVER 264,000 1mm HOLES IN FOUR SCREENS USING MST'S CNC MACHINE**





ITEM 1432

**AGITATOR BLADES:**

1. OEM 316SS BLADES ARE ON THE LEFT
2. MST FERRALIUM BLADES ON THE RIGHT
3. MST MADE METALLURGICAL IMPROVEMENTS AND TO DATE 9/2006 THEY HAVE LASTED TWICE AS LONG



ITEM 1433

**MST ALSO MADE VALUE ADDED ENGR IMPROVEMENTS TO THIS AGITATOR ASSY.**

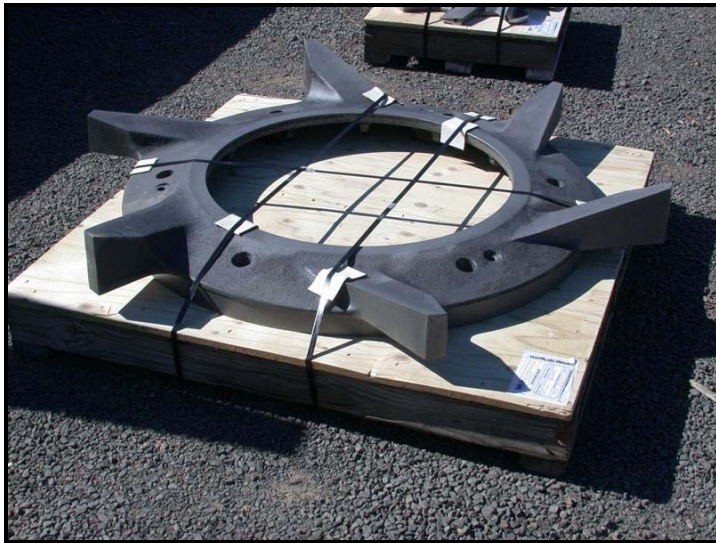
**HELP ELIMINATE A STUFFING BOX PACKING ISSUE, ETC.**

*NOT RELATED TO ABOVE BLADES*



ITEM 1434

**BLACK CLAWSON PULPER ROTOR**



**BLACK CLAWSON ROTORS OCC**

ITEM 1435 **SHARK PULPER ROTOR**



ITEM 1436

BEFORE &  
AFTER:

UPGRADE  
VANE  
PATTERN

ALSO  
MATCHED  
MASS TO  
MATING  
ROTOR  
FOR HP





#1437 CMV10 Contaminex Ext. Plate w/Frame Mfg New



#1437 CMV10 Contaminex Rotor Mfg New



#1438 Size 20 Contaminex Impeller



#1439 Valmet Rotor Paper Machine Broke



Valmet Segmented Extraction Plates Mfg New



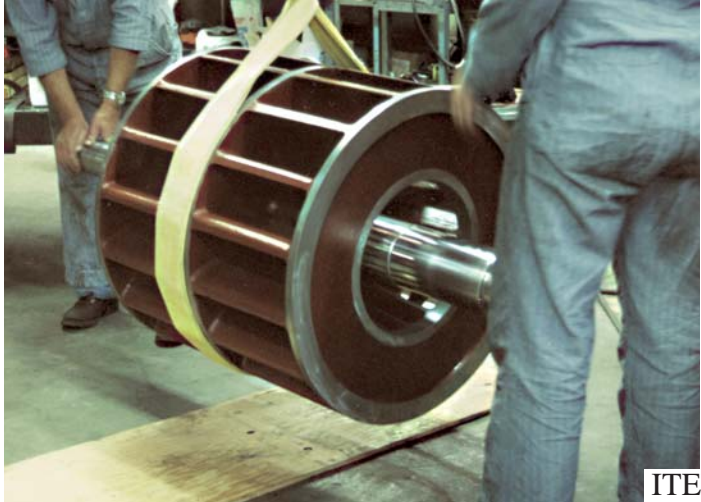


#1439 VSAP-100 Voith 96" Diameter Rotor

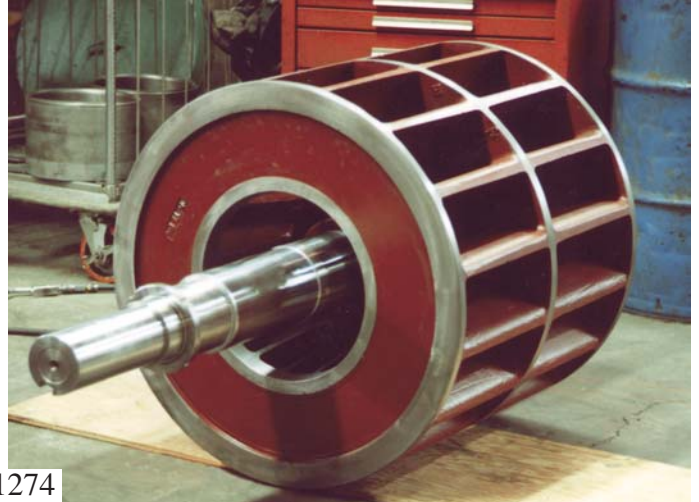


#1439 VSAP-100 Voith 98" Diameter Extraction Plates Mfg New by MST CNC machine





ITEM 1274



VACUUM PUMP ROTOR RESTORATION



ITEM 1275

REVERSE ENGINEERED AND  
MANUFACTURE OF NEW WINDER  
SWING ARMS FOR BELOIT  
PAPER MACHINE



ITEM 1276

MANUFACTURE NEW SPECIAL  
CENTRI-CLEANER CONE  
SECTION WITH SIGHT  
GLASS LEVEL INDICATORS





ITEM 1277

RESTORATION OF CAST HOUSING



ITEM 1278

CAST MANIFOLD RESTORATION



ITEM 1279

RESTORED BLOWER END BELL,  
READY FOR ASSEMBLY



ITEM 1280

CODE FITTINGS MODIFICATION







ITEM 1281

CERAMIC LINED SEPARATOR CONES



ITEM 1282

GEAR HOUSING-MODIFIED TO TAKE SS FITTING SHOWN



ITEM 1283

ROTOR SHAPE GAGE FOR MILL MAINTENANCE DEPARTMENT USE



ITEM 1284

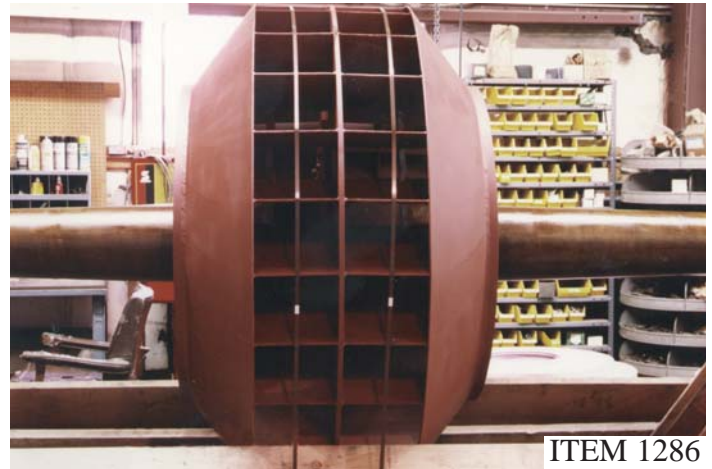
NEW, INLINE DEFUSER PLATE





ITEM 1285

RESTORATION OF CRACKED AND DAMAGED BLOWER ROTORS, CRACKS REPAIRED USING “METAL STITCH” PROCESS



ITEM 1286

MANUFACTURE NEW CUSTOMIZED ID FAN FOR POWER BOILER, HAS SPECIAL WEAR LINER SYSTEM BUILT FOR TWELVE YEAR LIFE CYCLE

He has honor if he holds himself to an ideal of conduct though it is inconvenient, unprofitable, or dangerous to do so.

Walter Lippmann



ITEM 1287



ITEM 1288

REVERSE ENGINEER AND REMANUFACTURE MULTI EXOTIC METAL HIGH CAPACITY RING PRESS





ITEM 1289



### SPECIAL CUSTOM PACKING LANTERN RINGS

Quality should be aimed at the needs of the consumer, present and future.  
W. Edwards Deming



ITEM 1290



### HIGH SPEED BLOWER SET RESTORATION



ITEM 1291

NEW NCB PACKING SLEEVES, CUSTOM



ITEM 1292

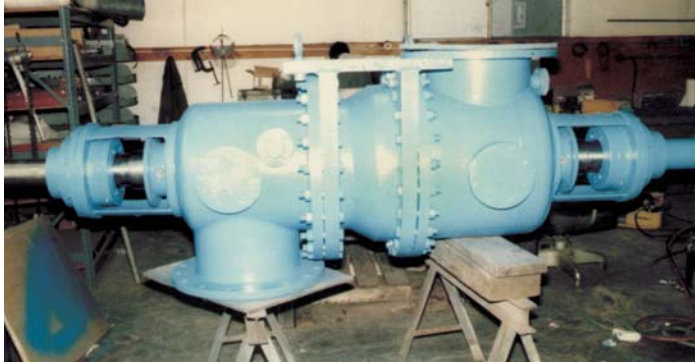
CERAMIC WEAR TILE LINING FOR  
FIBERGLASS TOWER



ITEM 1293

EXOTIC METAL RING PRESS ROTATING ELEMENT 800 HORSEPOWER





ITEM 1294

TITANIUM MIXER RESTORATION



ITEM 1295

CUSTOM REDESIGNED BAIL PRESS TRACKING WHEEL SYSTEM, REDESIGNED AND MANUFACTURED BY MST



ITEM 1296



PART OF CUSTOM REDESIGNED BAIL PRESS TRACKING WHEEL SYSTEM, REDESIGNED AND MANUFACTURED BY MST



ITEM 1297

NEW DIFFUSION RING INLINE ON  
PAPER MACHINE FAN PUMP



ITEM 1298

DRIVE STUBS FOR BIRD CENTRIFUGE



ITEM 1299

WELD RESTORE BROKEN  
LATHE STEADY REST



ITEM 1300

WELD RESTORE RE-MACHINE AND  
LINE BORE GEAR HOUSING







ITEM 1301

WELD RESTORE RE-MACHINE AND  
LINE BORE GEAR HOUSING



ITEM 1302

FURNISH MATERIAL AND  
MANUFACTURE NEW MOTOR  
PEDESTAL FOR BOILER  
FEED WATER SYSTEM

When learning about the laws of physics you find that there are a large number of complicated and detailed laws, laws of gravitation, of electricity and magnetism, nuclear interactions, and so on, but across the variety of these detailed laws there sweep great general principles which all the laws seem to follow.

Richard Feynman



ITEM 1303

REMANUFACTURE HIGH CAPACITY  
EXHAUST FAN, STAINLESS STEEL



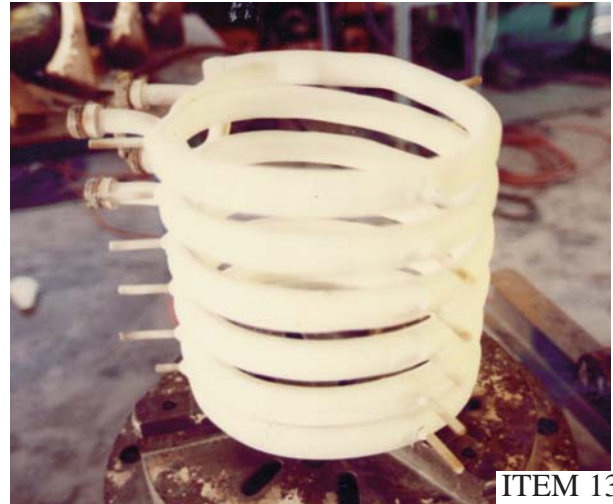
ITEM 1304

CUSTOM 17-4PH BAIL PRESS (PAAL)  
GUIDE BARS



ITEM 1305

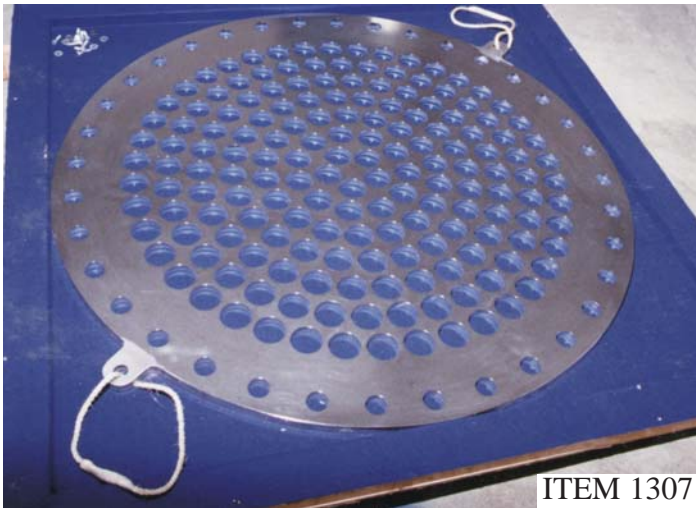
VACUUM PUMP RESTORATION



ITEM 1306

THERMAL CERAMIC COATING  
FOR PROTECTION OF COPPER  
INDUCTION COIL SET

The real leader has no need to lead-he is content to point the way.  
Henry Miller



ITEM 1307

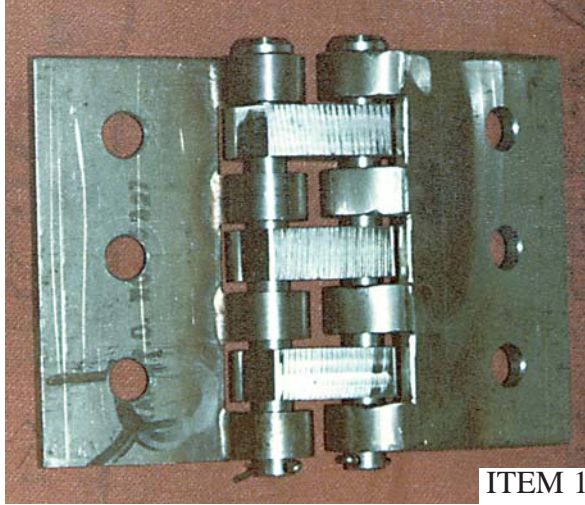
NEW INLINE DEFUSER  
FOR PAPER MACHINE FAN PUMP



ITEM 1308

NEW STAINLESS STEEL LINER TUBE





ITEM 1309

### CUSTOM HINGE REMANUFACTURE BY MST



ITEM 1310

### VACUUM PUMP RESTORATION

Integrity can be neither lost nor concealed nor faked  
nor quenched nor artificially come by nor outlived,  
or, I believe, in the long run denied.

Eudora Welty



### KAMYR® BOTTOM PLOW RESTORATION



KAMYR® and MC® are registered trademarks of Andritz, Inc.



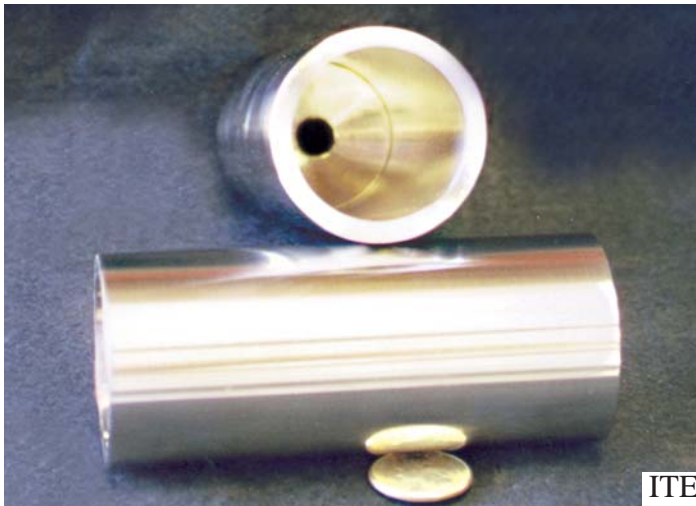
ITEM 1311

VALVE SEAT SET



ITEM 1312

REPLACEABLE STAINLESS STEEL  
STUFFING BOX SET WITH INTEGRAL  
LANTERN RING - VALUE ADDED  
ENGINEERING BY MST

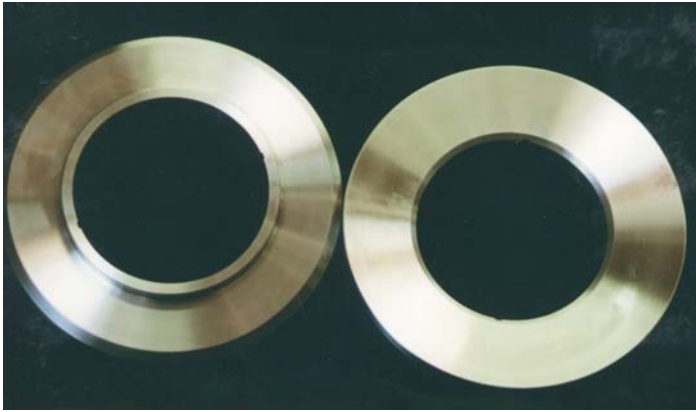


ITEM 1313



FEED SCREW SLEEVES





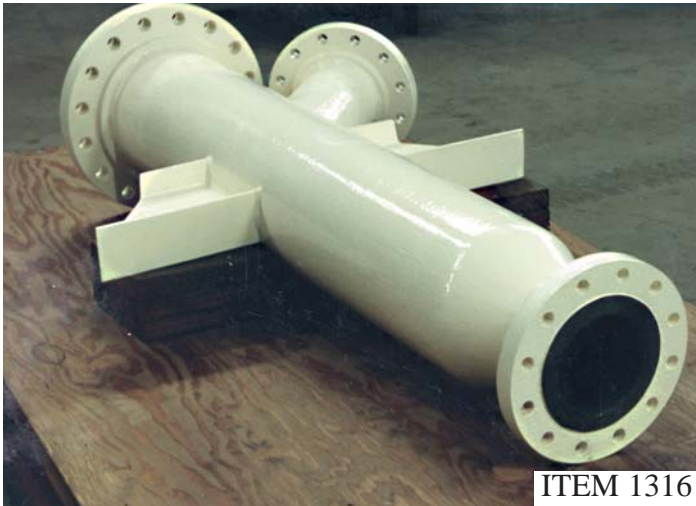
ITEM 1314

BINGHAM LIQUOR PUMP  
INSERT RINGS BY MST



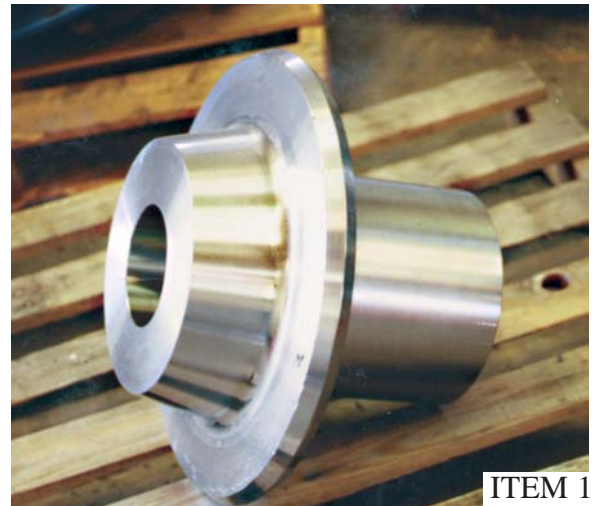
ITEM 1315

SPECIAL CUSTOM VIBRATING SCREEN  
MOUNTING BRACKETS MFG. OF  
STAINLESS STEEL



ITEM 1316

CUSTOM STEAM MIXER/HEATER  
HOUSING



ITEM 1317

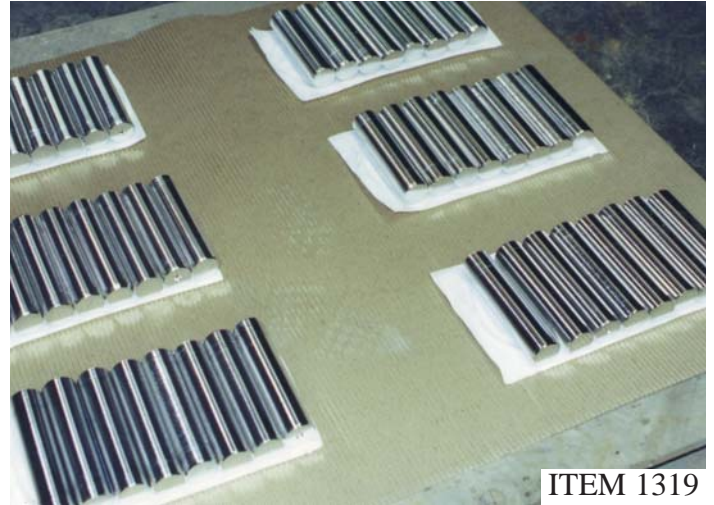
NEW HUB FOR FAN  
WHEEL FABRICATION





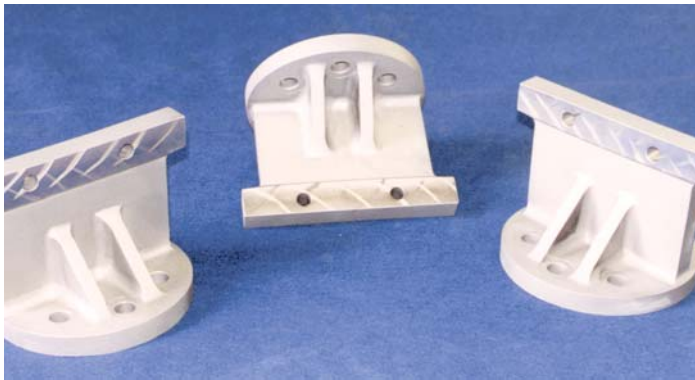
ITEM 1318

REFINER PLATE CENTER  
DISTRIBUTION NUT



ITEM 1319

CUSTOM TYPE NITRONIC STRESS  
CORROSION RESISTANT  
STUDS FOR HPRV



ITEM 1320

SPECIAL CUSTOM VIBRATING SCREEN  
MOUNTING BRACKETS MFG. OF  
STAINLESS STEEL

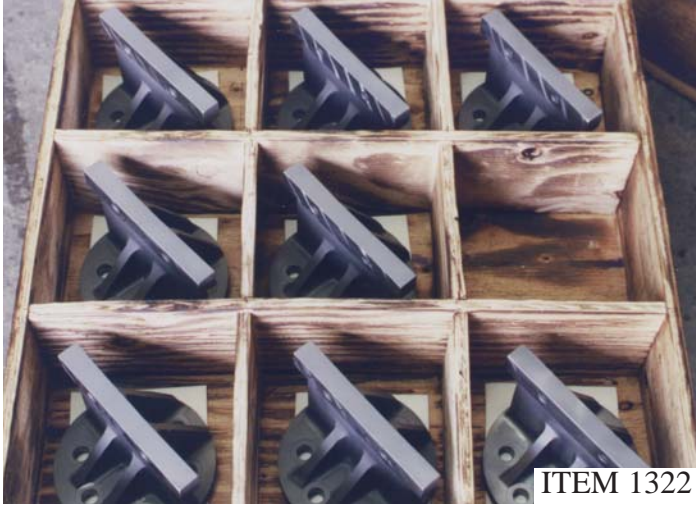


ITEM 1321

FEED SCREW TUNGSTEN CARBIDE  
COATED SLEEVES FOR SEVERE WEAR  
APPLICATIONS

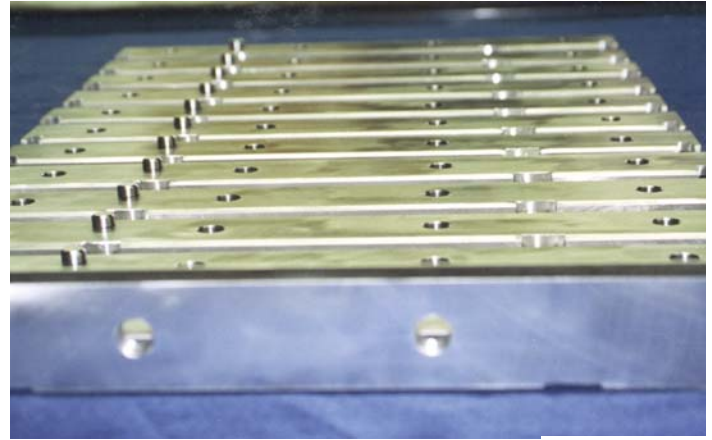






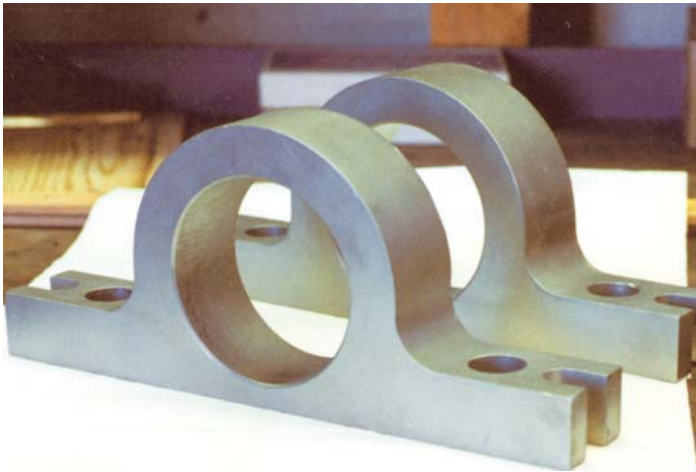
ITEM 1322

SPECIAL CUSTOM VIBRATING SCREEN  
MOUNTING BRACKETS MFG. OF  
STAINLESS STEEL



ITEM 1323

SET OF NEW SPECIAL  
HIGH PRESSURE ROTARY  
VALVE KNIVES



ITEM 1324

CUSTOM PILLOW BLOCKS  
MFG. BY MST



ITEM 1325

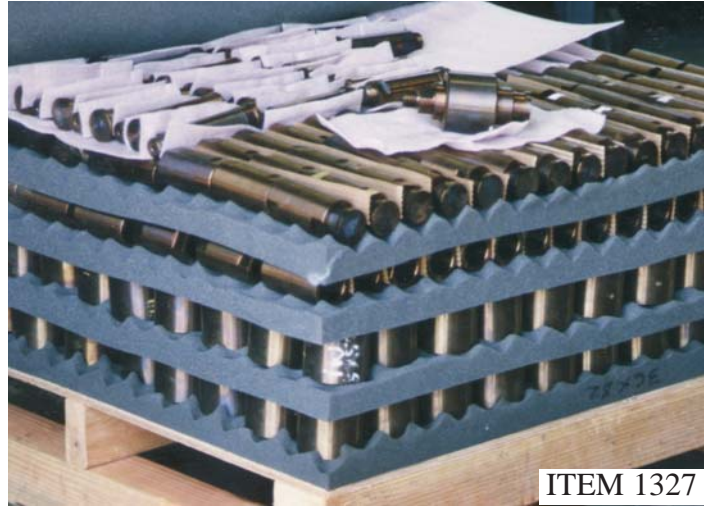
CUSTOM 440C - SPECIAL PROCESS  
AND HEAT TREATMENT  
NON LUBRICATED SUBMERGED  
SHAFT BEARING BUSHING





ITEM 1326

NEW PACKING SLEEVE - CUSTOM



ITEM 1327

NEW SET OF PINS AND ROLLERS FOR  
M&D DIGESTER CONVEYOR CHAIN



ITEM 1328

BIGHAM LIQUOR PUMP  
INSERT RINGS BY MST



ITEM 1329

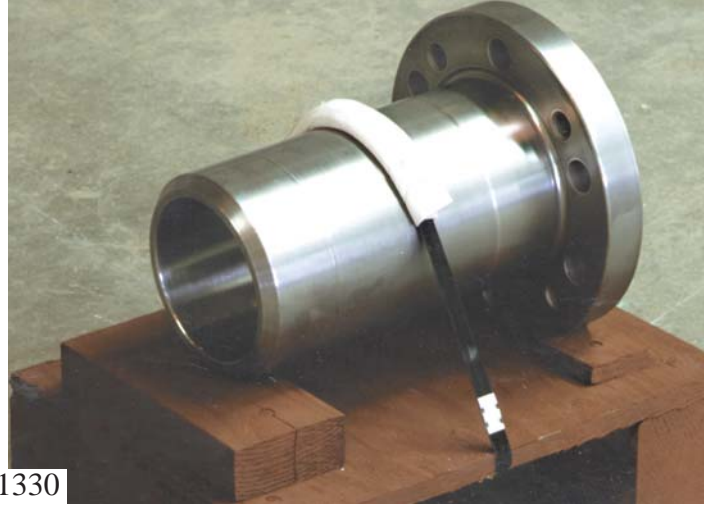
REFINER INTERNAL LOAD SENSOR  
HOUSINGS SET



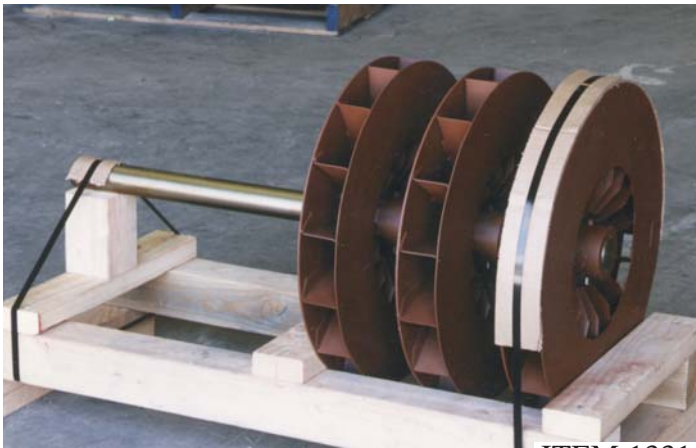




ITEM 1330



CUSTOM 440C - SPECIAL PROCESS AND HEAT TREATMENT  
NON LUBRICATED SUBMERGED SHAFT BEARING BUSHING



ITEM 1331

SPECIAL THREE STAGE HIGH  
VELOCITY (4500 RPM) BLOWER FAN  
NEW BY MST



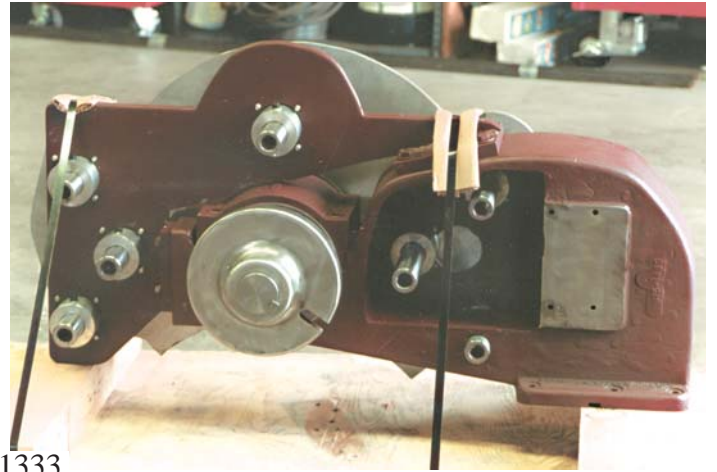
ITEM 1332

CUSTOM BAIL PRESS  
ROLLER SPINDLES





ITEM 1333



SPECIAL DOUBLE DISC GRINDER GRINDING AUTOMATIC FEED ATTACHMENT -  
DESIGNED AND MANUFACTURED BY MST



ITEM 1334



ITEM 1335

DE-BARKER ARMS RESTORATION

NEW HIGH PRESSURE ROTARY VALVE  
REPLACEMENT SHAFT







ITEM 1336

FLANGED NOZZLE



ITEM 1337

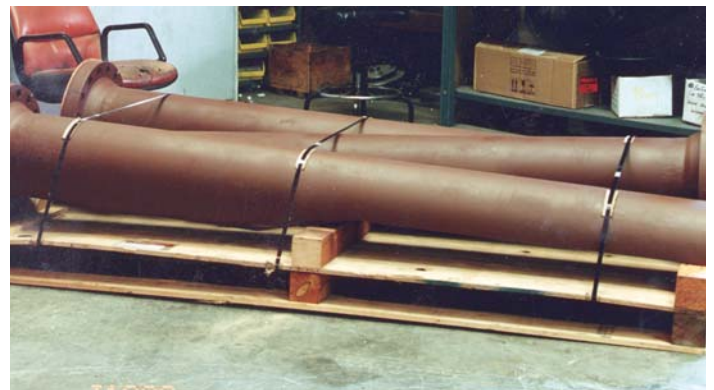
### KAMYR® BOTTOM PLOW RESTORATION

KAMYR® and MC® are registered trademarks of Andritz, Inc.



ITEM 1338

BLOW NOZZLE FOR BATCH DIGESTER WITH SPECIAL MST HARD LINER SYSTEM



ITEM 1339

BLOW TANK TANGENTIAL ELBOW WITH SPECIAL MST TRI-SYSTEM WEAR LINER





ITEM 1340

REFINER INTERNAL LOAD SENSOR HOUSING, NEW



ITEM 1341

CUSTOM LONG-LIFE SIDE OUTLET BATCH DIGESTER FITTINGS BY MST



ITEM 1342

RESTORATION REPAIR OF LARGE HEAT EXCHANGER DIVIDER HOUSING CODE

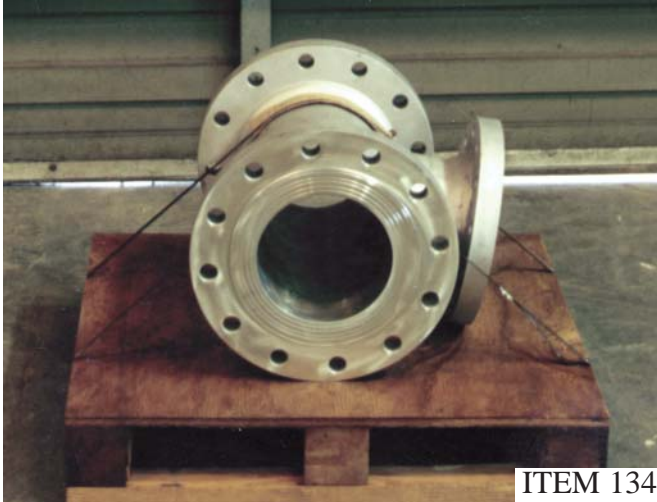


ITEM 1343

THICK STOCK PUMP RESTORATION







ITEM 1344

DIGESTER FITTING NEW



ITEM 1345

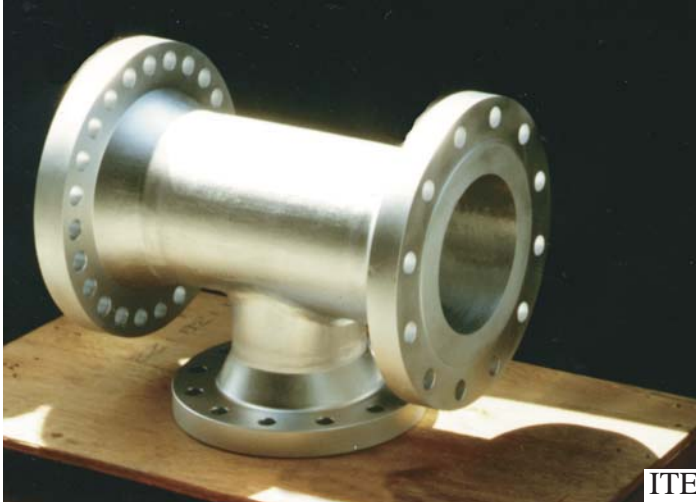
SPECIAL SS BLOW LINE DIGESTER FITTING LONG LIFE DESIGN



ITEM 1346



SPECIAL SS BLOW LINE DIGESTER FITTING LONG LIFE DESIGN, REDESIGNED TO TAKE SPECIAL SLIP RING FLANGE FOR FIELD ALIGNMENT ISSUES

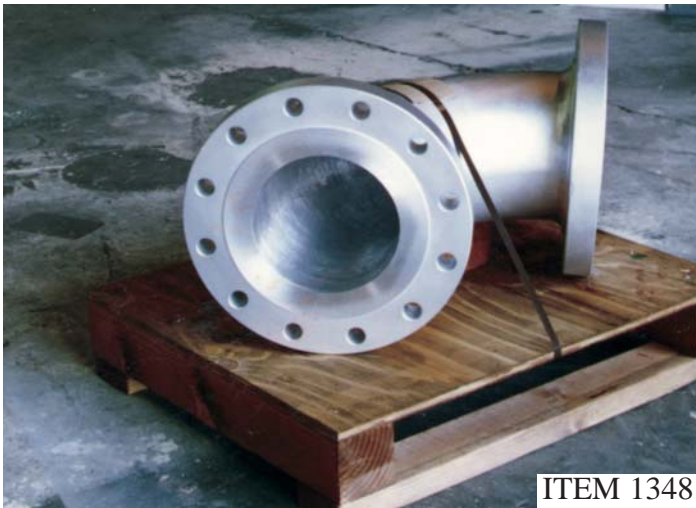


ITEM 1347



### MST LONG LIFE SIDE OUTLET DIGESTER FITTING

To do great things is difficult; but to command great things is more difficult.  
Nietzsche



ITEM 1348

### SPECIAL LINED 90 DEGREE ELBOW DIGESTER FITTING



ITEM 1349

### CUSTOM HIGH EFFICIENCY HIGH PRESSURE ROTARY VALVE EXHAUST MANIFOLD DESIGNED AND MANUFACTURED BY MST



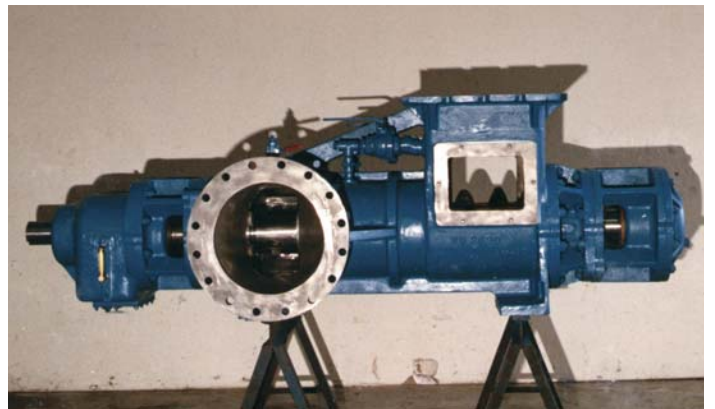


ITEM 1350

### RE-SHAFTED AND RESTORED REFINER IN-FEED RIBBON SCREW SPECIAL METALLURGICAL ATTACHMENT DESIGN TO PREVENT CRACKING

Science is the attempt to make the chaotic diversity of our sense-experience correspond to a logically uniform system of thought.

Einstein



ITEM 1351

### SCREW STYLE THICK STOCK PUMP RESTORATION



ITEM 1352

CUSTOM FITTING



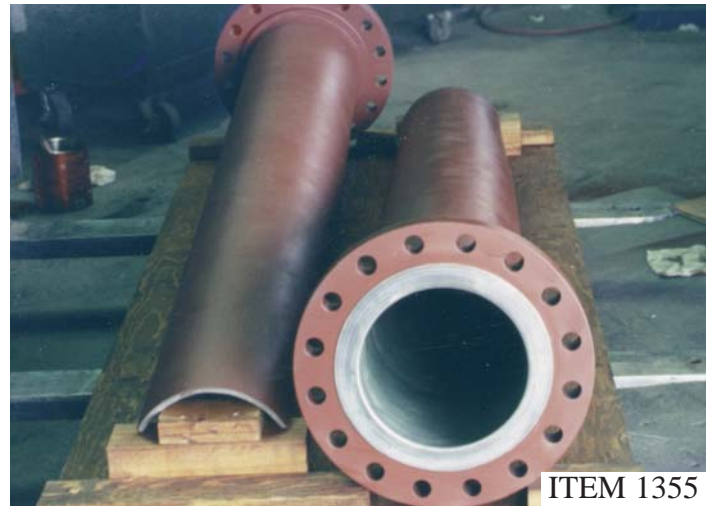
ITEM 1353

REFINER RIBBON SCREW LOAD  
SENSOR HOUSING SETS  
FOR SPROUT BAUER



ITEM 1354

NEW INTERNAL LOAD SENSOR  
HOUSING FOR SPROUT  
BAUER REFINER

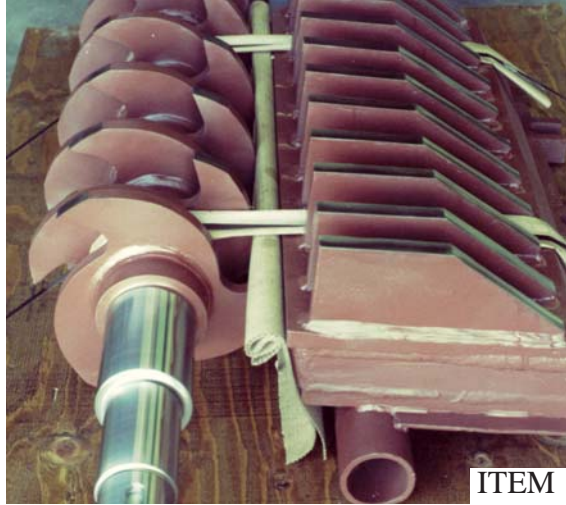


ITEM 1355

BLOW TANK TANGENTIAL ELBOW  
WITH SPECIAL MST  
TRI-SYSTEM WEAR LINER







ITEM 1356

LIME CRUSHER AND ANVIL RESTORATION



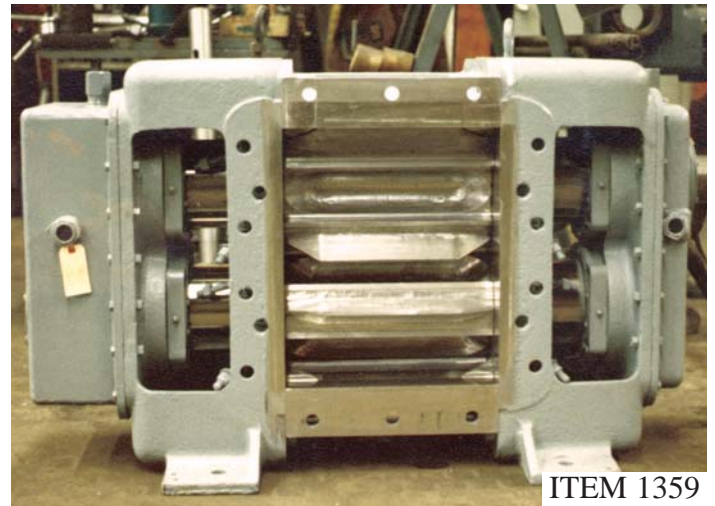
ITEM 1357

HIGH ALLOY T317 SS BATCH DIGESTER CHIP PACKERS. THESE UNITS (EIGHT TOTAL) WERE MANUFACTURED BY MST TO REPLACE FAILED OEM UNITS CODE CONSTRUCTION



ITEM 1358

RESTORATION OF STOCK PUMP ROTORS



ITEM 1359

STOCK PUMP RESTORATION





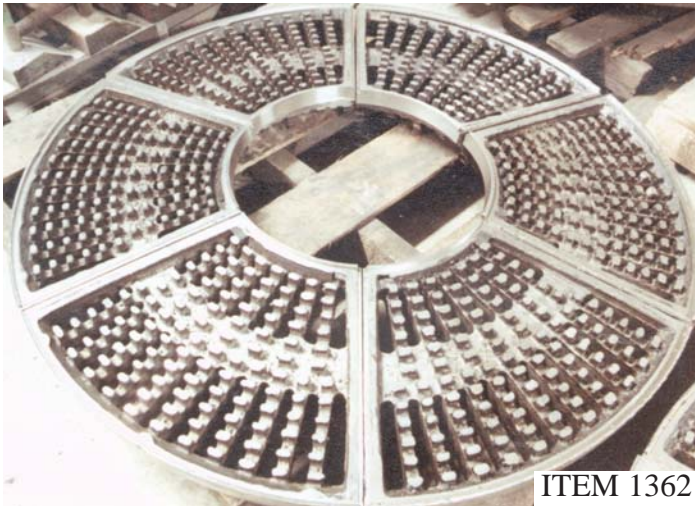
ITEM 1360

RESTORED AND ALLOY UPGRADE FOR  
BALL VALVE ASSEMBLY



ITEM 1361

SUPER ALLOY FABRICATION OF  
TRANSITION VESSEL FOR  
MOUNTING BAUER HIGH  
PRESSURE ROTARY VALVE



ITEM 1362

RESTORATION - SPECIAL IMPCO  
STYLE RING PRESS



ITEM 1363

PRESS SCREW RESTORATION







ITEM 1364

LARGE KAMYR® SS IMPREGNATOR SCREW - REDESIGNED AND REPLACED DRIVE STUBS - SECTIONED OUT AND REPLACED FAILED CENTER SECTION OF SCREW AND REINFORCED FLIGHT SYSTEM SO ASSEMBLY WOULD TOLERATE. INCREASED HORSE POWER AND PRODUCTION



## MST CORPORATION

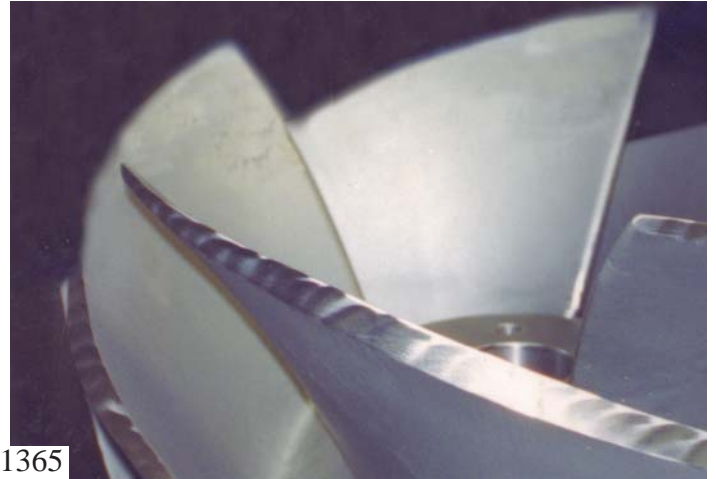
In science, all facts, no matter how trivial or banal, enjoy democratic equality.

Mary McCarthy

KAMYR® and MC® are registered trademarks of Andritz, Inc.



ITEM 1365



## VARIOUS PUMP IMPELLER RESTORATIONS

The strange thing about physics is that for the fundamental laws we still need mathematics.  
Richard Feynman



ITEM 1366



ITEM 1367

VARIOUS PUMP IMPELLER  
RESTORATION

VARIOUS PUMP IMPELLER  
RESTORATION



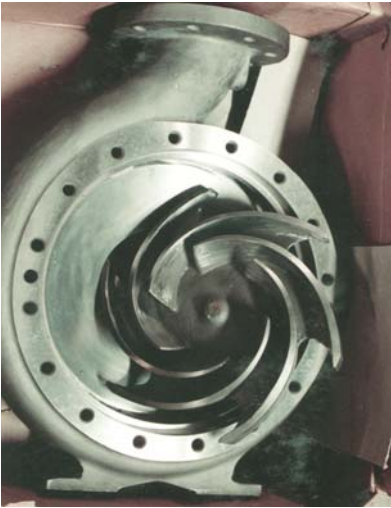


ITEM 1368

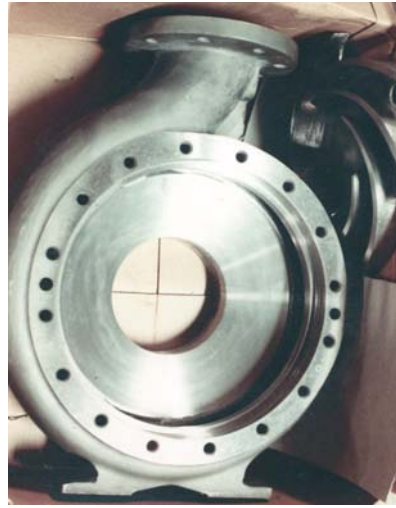


## PUMP HOUSING RESTORATIONS

Quality must be built in at the design stage.  
W. Edwards Deming



ITEM 1369



## PUMP HOUSING RESTORATIONS



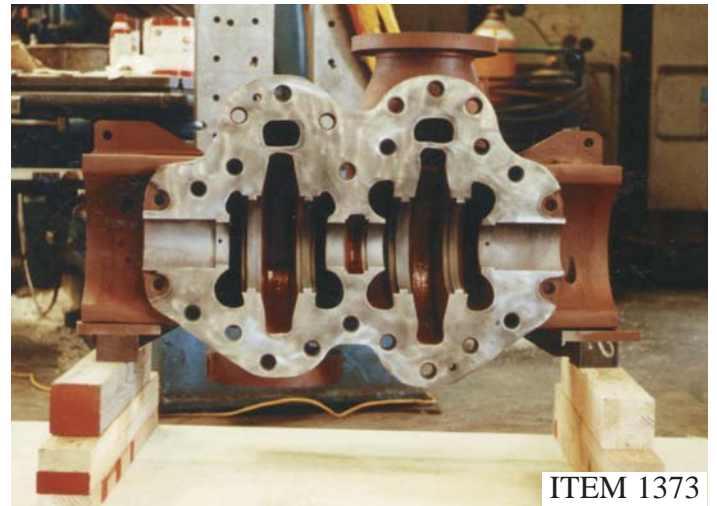
VARIOUS PUMP IMPELLER RESTORATION



VARIOUS PUMP IMPELLER RESTORATION



PUMP INLET RING RESTORATIONS



PUMP HOUSING RESTORATIONS







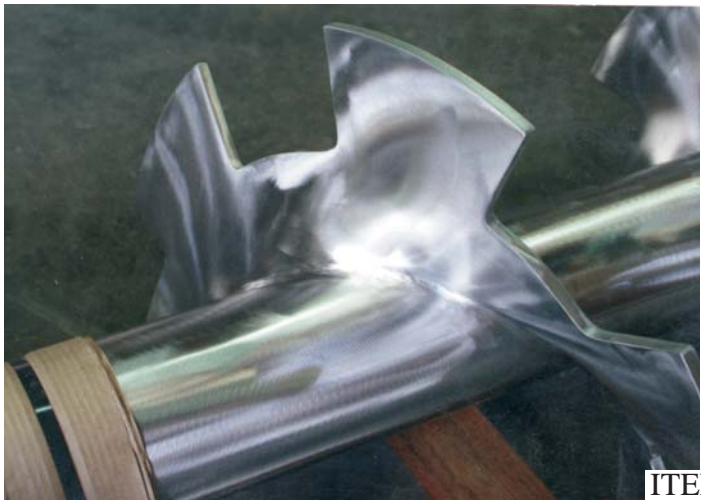
ITEM 1374



## REFINER RIBBON FEEDER MANUFACTURE AND RESTORATIONS AND METALLURGICAL UPGRADE

Best efforts are essential. Unfortunately, best efforts, people charging this way and that way without guidance of principles, can do a lot of damage. Think of the chaos that would come if everyone did his best, not knowing what to do.

W. Edwards Deming



ITEM 1375



## SPECIAL “DUPLEX ALLOY” MIXING FEED SCREW FABRICATION FOR CHLORIDE SERVICE



ITEM 1376

### HIGH ALLOY SCREW FABRICATION FOR SEVERE CORROSION SERVICE



ITEM 1377

### HIGH ALLOY SCREW FABRICATION FOR SEVERE CORROSION SERVICE NOTE SPECIAL FINISH DETAIL

It is proper to the role of the scientist that he not merely find new truth and communicate it to his fellows, but that he try to bring the most honest and intelligible account of the new knowledge to all who will try to learn.  
J. Robert Oppenheimer



ITEM 1378



### HIGH ALLOY SCREW FABRICATION FOR SEVERE CORROSION SERVICE





ITEM 1379



**SPECIAL CONVEYOR SCREW FABRICATION WITH CRACK RESISTANT  
METALLURGICAL PROCESS TECHNOLOGY,  
BY MST**

It is said that one machine can do the work of fifty ordinary men. No machine, however, can do the work of one extraordinary man.

Tehyi Hsieh



ITEM 1380



**LARGE KAMYR® SS IMPREGNATOR SCREW - REDESIGNED AND REPLACED DRIVE  
STUBS - SECTIONED OUT AND REPLACED FAILED CENTER SECTION OF SCREW  
AND REINFORCED FLIGHT SYSTEM SO ASSEMBLY WOULD TOLERATE  
INCREASED HORSEPOWER AND PRODUCTION**

9-87

KAMYR® and MC® are registered trademarks of Andritz, Inc.



ITEM 1381

**LARGE KAMYR® SS IMPREGNATOR  
SCREW REDESIGNED AND REPLACED  
DRIVE STUBS - REDESIGNED AND  
REPLACED FAILED CENTER SECTION**

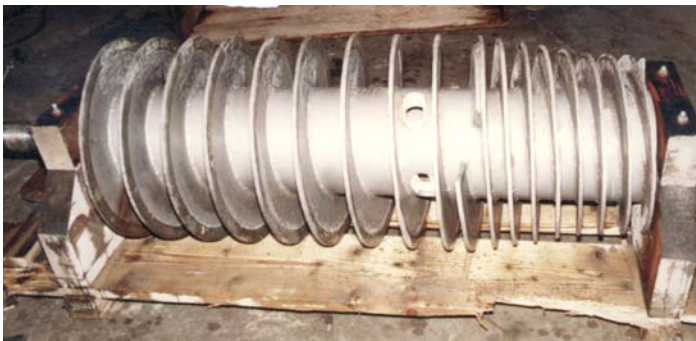


ITEM 1382

**KAMYR® TOP SEPARATOR SCREW  
RESTORATION**

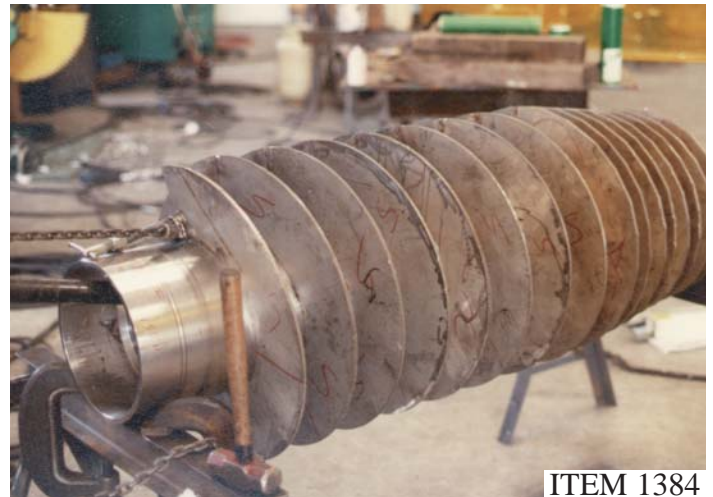
What is necessary ‘for the very existence of science’, and what the characteristics of nature are, are not to be determined by pompous preconditions, they are determined always by the material with which we work, by nature herself.

Richard Feynman



ITEM 1383

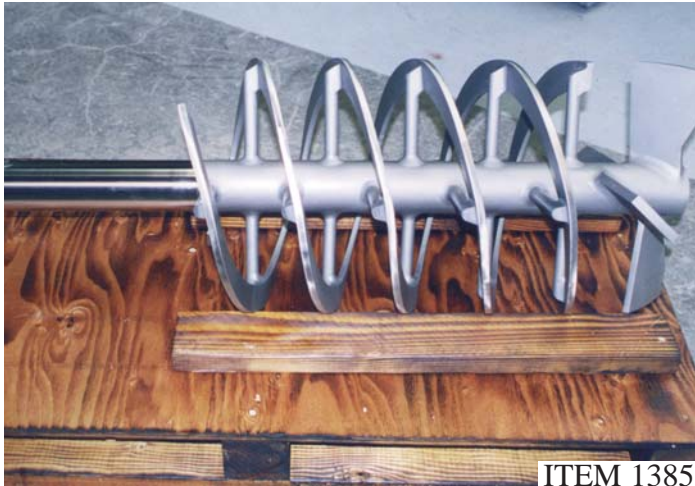
**SPECIAL DOUBLE FLIGHT SECTION  
DESIGNED CONVEYOR SCREW FOR  
HIGH RPM BIRD CENTRIFUGE,  
DESIGNED AND MANUFACTURED  
BY MST**



ITEM 1384

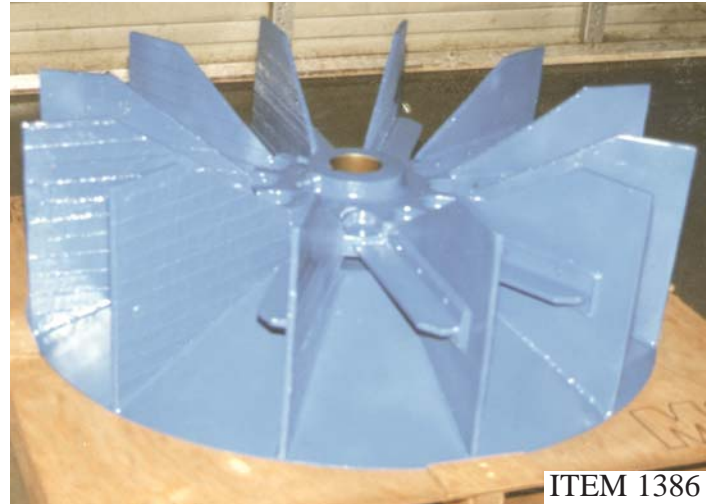
**SPECIAL DOUBLE FLIGHT SECTION  
DESIGNED CONVEYOR SCREW FOR  
HIGH RPM BIRD CENTRIFUGE -NEW  
IN PROCESS**





ITEM 1385

NEW RIBBON FEEDER FOR  
REFINER IN FEED



ITEM 1386

NEW TRITEN PLAT CHIP BLOWER  
FAN WHEEL

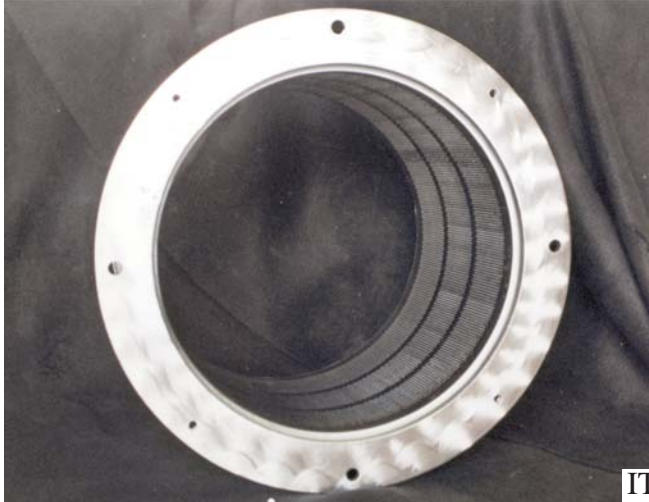
There is no substitute for teamwork and good leaders of teams to bring consistency of effort, along with knowledge.

W. Edwards Deming

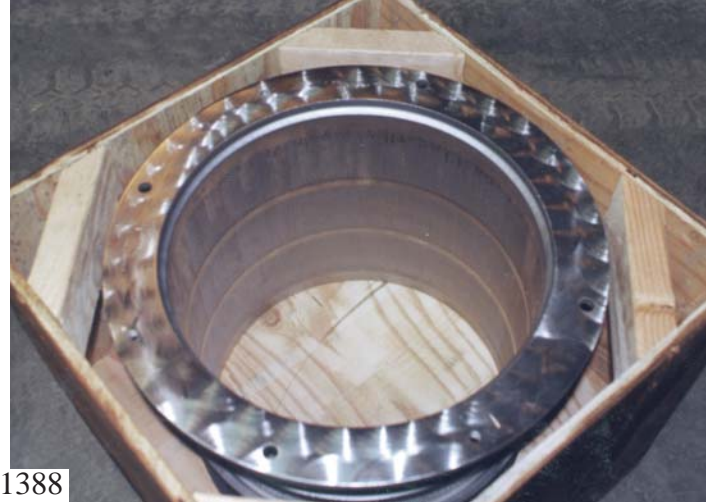


ITEM 1387

NEW RIBBON FEEDER FOR  
REFINER IN FEED



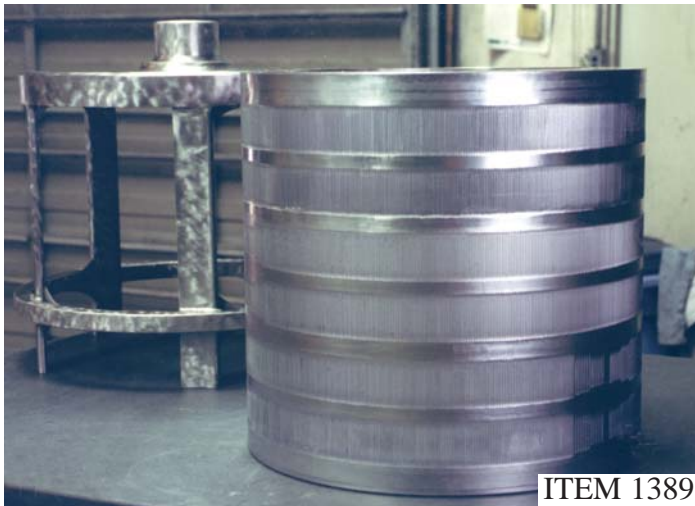
ITEM 1388



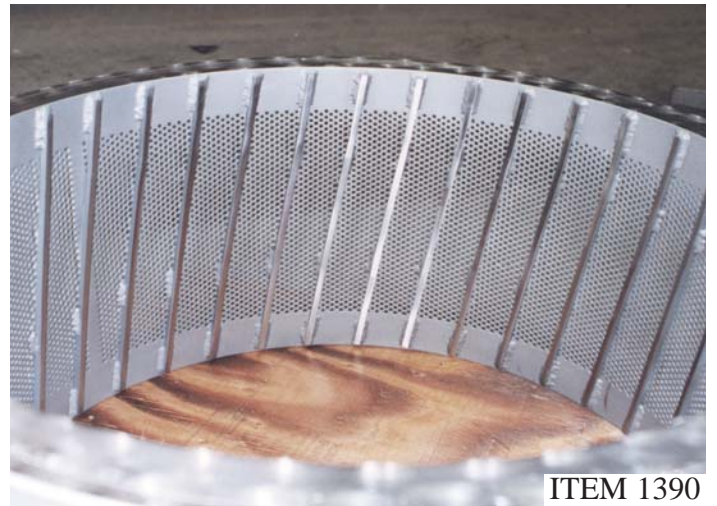
### SLOTTED BASKET RESTORATION

Both pure and applied science have gradually pushed further and further the requirements for accuracy and precision.

Walter A. Shewhart



ITEM 1389



ITEM 1390

### INTEGRAL ROTOR/FOIL BAR ROTOR AND SLOTTED BASKET RESTORATION

### SLOTTED BASKET RESTORATION





ITEM 1391

SLOTTED BASKET RESTORATION



ITEM 1392

SLOTTED BASKET RESTORATION



ITEM 1393

ROUND SCREEN BASKET RESTORATION



ITEM 1394

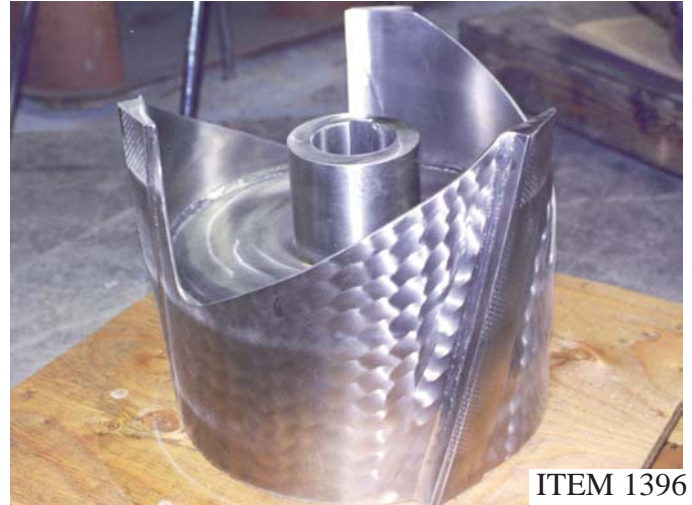
BELOIT LOBBED ROTOR AND UPPER WEIR MANUFACTURE NEW BY MST





ITEM 1395

KAMYR® TOP SEPARATOR SLOTTED BASKET RESTORATION



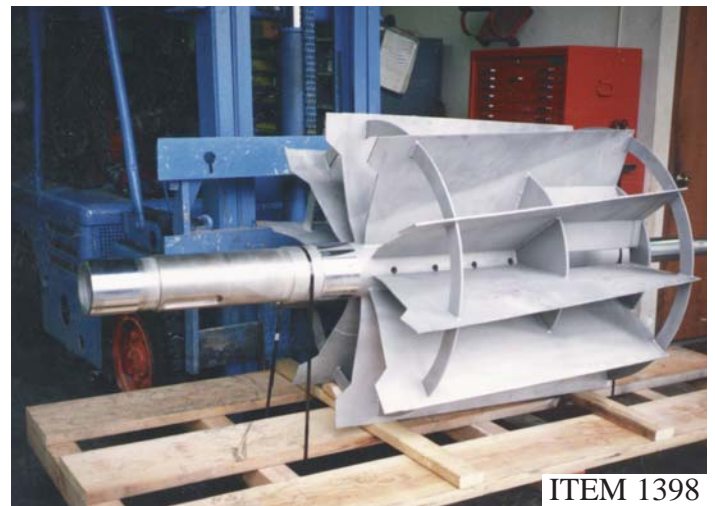
ITEM 1396

REMANUFACTURE SPECIALTY SEPARATOR ROTOR WITH INTEGRAL FOIL BARS



ITEM 1397

FOIL BAR RESTORATION

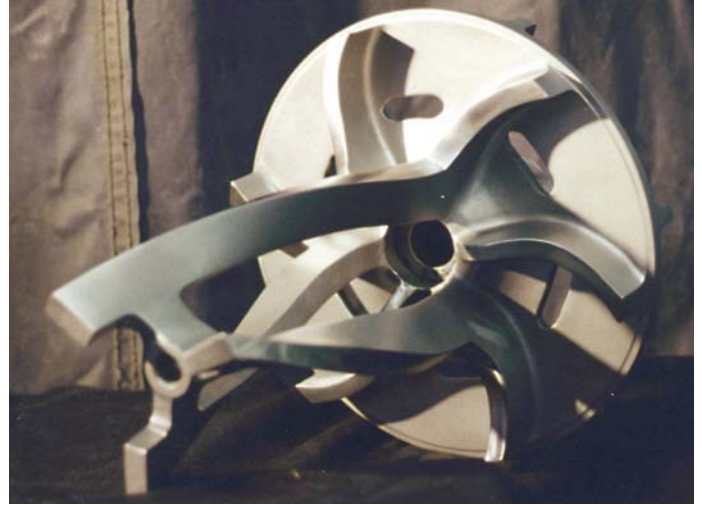


ITEM 1398

ROUND SCREEN ROTOR RESTORATION  
- NOTE SPECIAL "BRAKE/CREASE"  
IN BLADE SECTION







ITEM 1399



MC® MIXER IMPELLER RESTORATIONS AND UPGRADE MATERIALS ARE TITANIUM OR SUPER ALLOY, MST DEVELOPED SPECIAL FIXTURING AND METHOD FOR ASSURING PRECISION TWO-PLANE BALANCE.

It is a commonplace of modern technology that there is a high measure of certainty that problems have solutions before there is knowledge of how they are to be solved.

John Kenneth Galbraith

KAMYR® and MC® are registered trademarks of Andritz, Inc.

**MST CORPORATION**  
*Dedicated to Quality and Advancements in Metal Working Technology*



ITEM 1400



**SPECIAL TITANIUM PIN AND BUSHING SET - BUSHING IS COATED WITH  
NON LUBE COATING (SLIPTECK) FOR UN-LUBRICATED FIT**

Morality regulates the acts of man as a private individual; honor, his acts as a public man.  
Estaban Echieverria



ITEM 1401



**TITANIUM PRESS RESTRICTOR WITH TEFLON COATING**





ITEM 1402

HIGH RPM CHLORINE MIXER ROTOR  
UNITS WERE REDESIGNED TO  
INCLUDE MIXER BLADES AS  
INTEGRAL TO ROTOR  
PRECISION BALANCED



ITEM 1403

TITANIUM PUMP IMPELLER HEAD



ITEM 1404

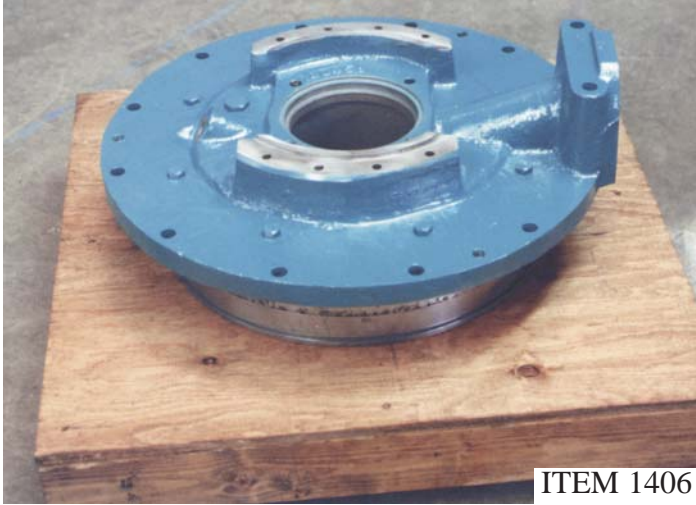
NEW REDESIGNED HIGH RPM MIXER  
SHAFT - SUPER ALLOY



ITEM 1405

SPECIAL REGULATING VALVE WITH  
STEM REPLACED  
SUPER ALLOY





ITEM 1406

TITANIUM PUMP IMPELLER HEAD



ITEM 1407

TITANIUM MIXER RESTORATION

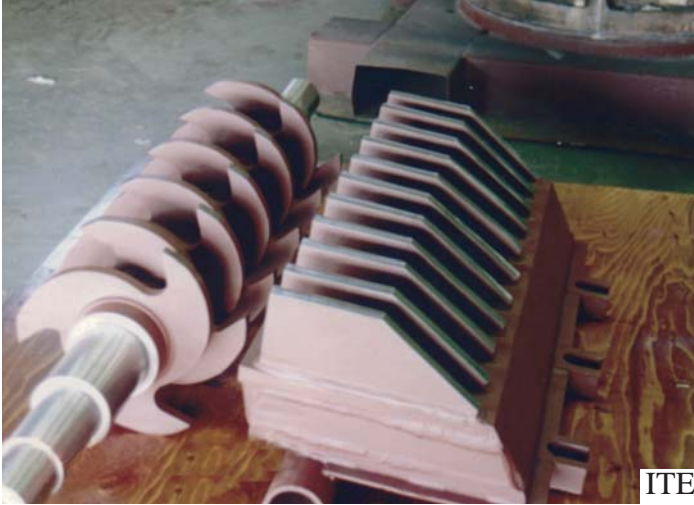


ITEM 1408

TITANIUM ARM WITH SAE SPECIFICATION FILLET PEEN BY MST







ITEM 1409



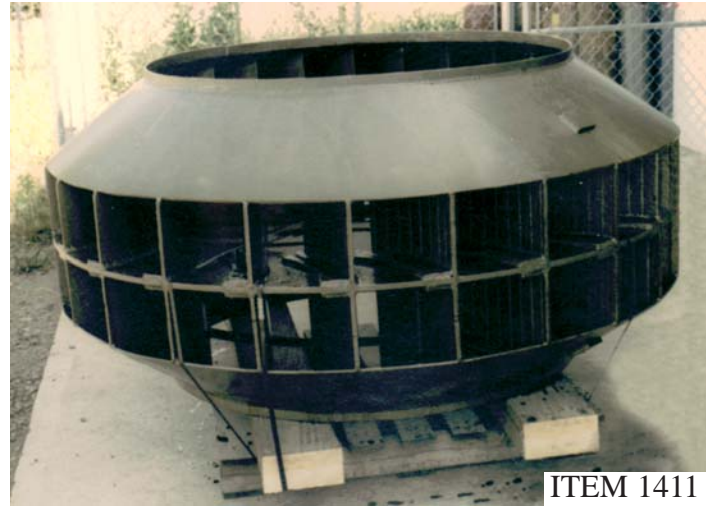
## LIME CRUSHER AND ANVIL RESTORATION

A man, though wise, should never be ashamed of learning more, and must unbend his mind.  
Sophocles



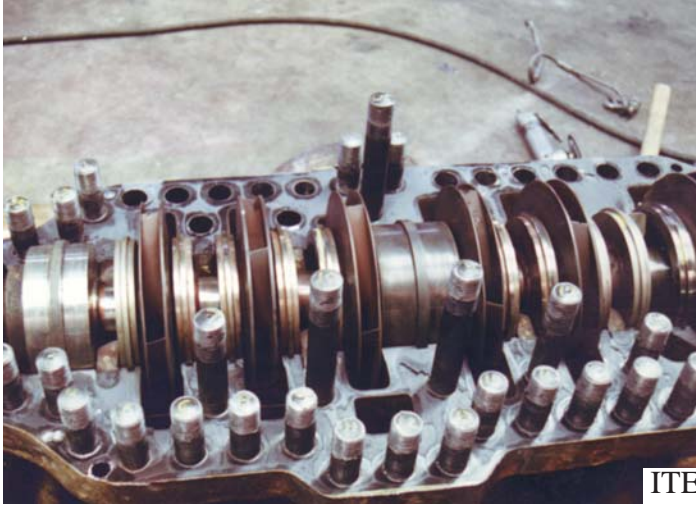
ITEM 1410

100" OD ID FAN - TRITEN BLADE  
SYSTEM AND REINFORCED SIDE  
PLATE DESIGN BY MST



ITEM 1411

CUSTOM POWER BOILER ID FAN  
SPECIAL CONSTRUCTION TO  
PREVENT WEAR AND TAMPERING BY  
UNAUTHORIZED WELDERS



ITEM 1412



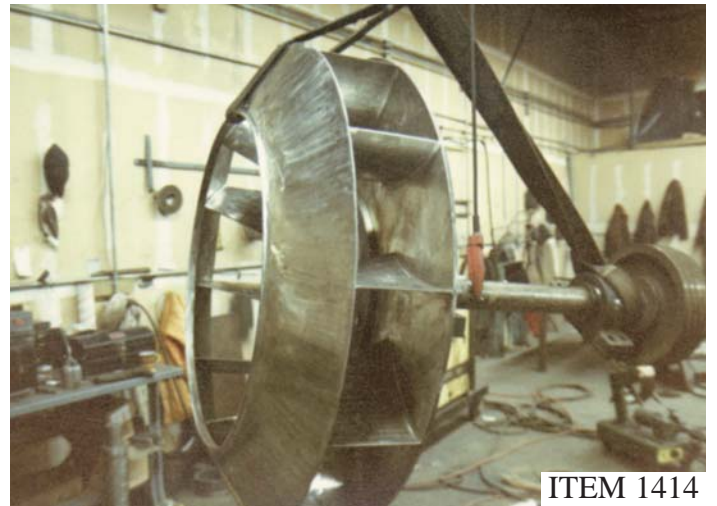
SIX STAGE FEED WATER PUMP HOUSING WELD  
RESTORED BY MST AFTER CATASTROPHIC FAILURE  
MACHINED AND LINE BORED BY MST



ITEM 1413



COMPRESSOR CRANK AND PULLEY  
RESTORATION



ITEM 1414

HIGH ALLOY FAN WHEEL FOR SEVERE  
CORROSION APPLICATION







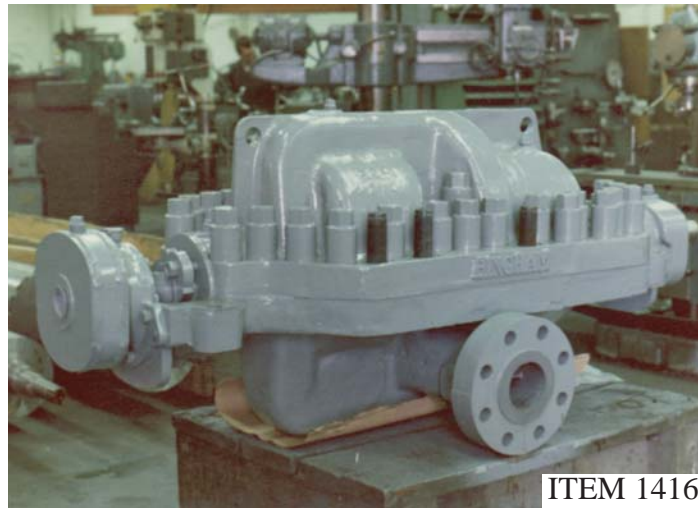
ITEM 1415

SUPER ALLOY FAN SHOWN BEFORE RESTORATION



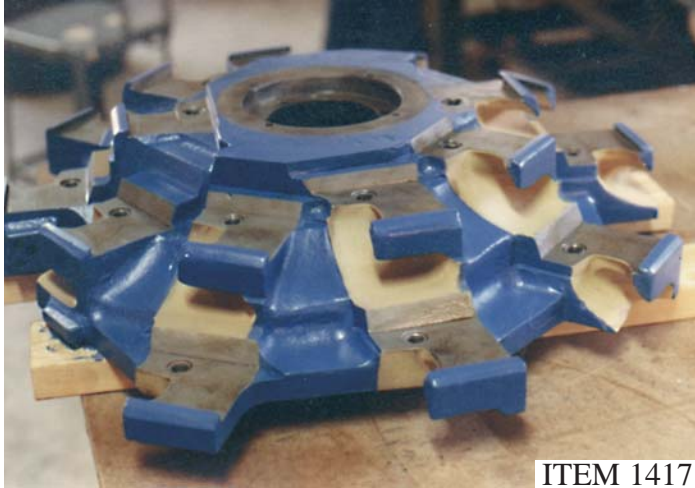
SUPER ALLOY FAN SHOWN AFTER RESTORATION

To learn is a natural pleasure, not confined to philosophers, but common to all men.  
Aristotle



ITEM 1416

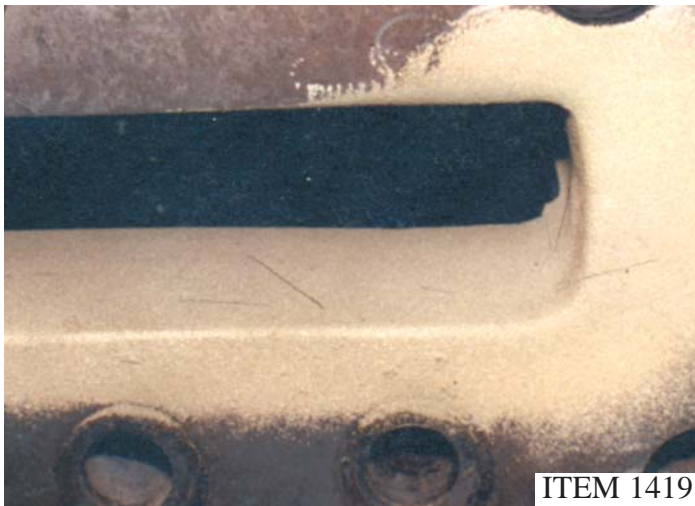
ASSEMBLED SIX STAGE FEED WATER PUMP - HOUSING WELDED AND RESTORED BY MST; RUNNER ASSEMBLY RESTORED BY MST



SPECIAL CHIPPER WHEEL  
RESTORED THEN PROTECTED WITH  
BRONZE COATING PROCESS IN  
DISCHARGE WEAR AREAS



BLOWER RESTORATION



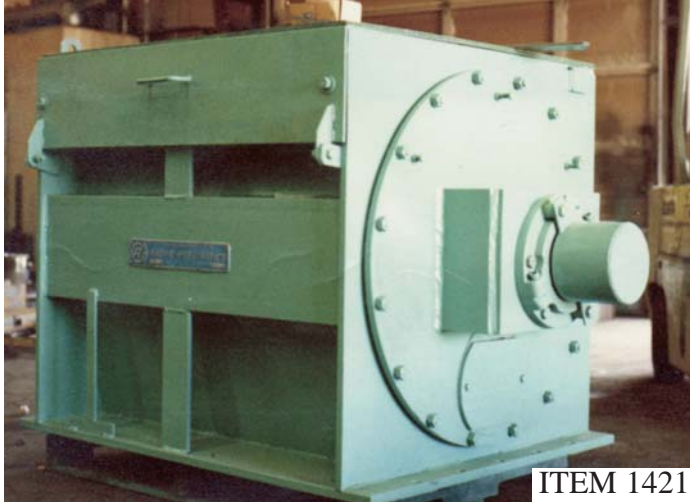
CHIPPER WHEEL RESTORATION AND  
BRONZE COATING PROTECTION  
SYSTEM



TWIN FEED SCREW RESTORATION  
SCREW SECTION COATED WITH  
SPECIAL WEAR RESISTANT CERAMIC

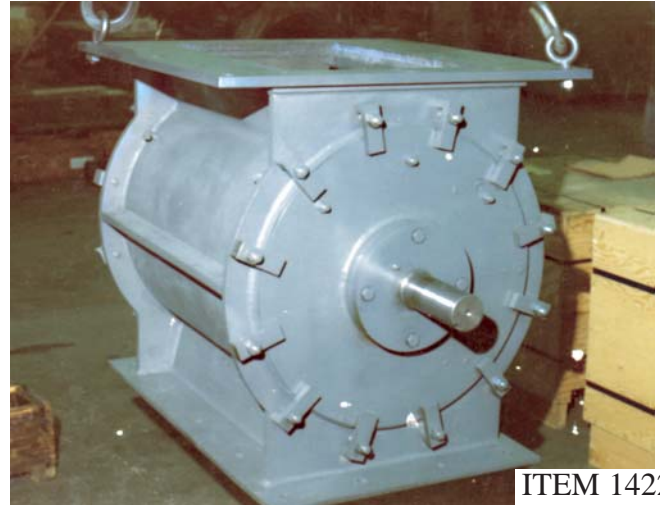






ITEM 1421

RADER AIRLOCK FEEDER  
RESTORATION AND BORE UPGRADE



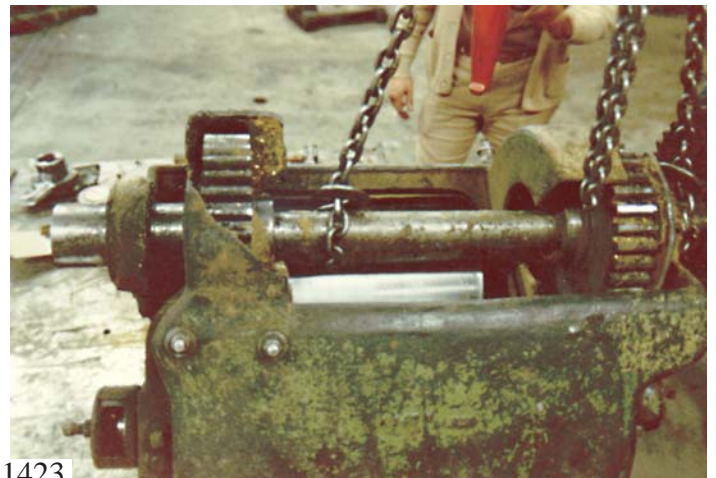
ITEM 1422

SPECIAL STAR FEEDER RESTORATION



ITEM 1423

SAWMILL APPLICATION - OBSOLETE EQUIPMENT RESTORATION  
DESIGNED AND FABRICATED - NEW HOUSING SECTION TO REPLACE  
FAILED CAST IRON - REVERSE ENGINEERED BY MST

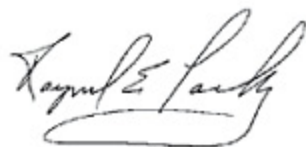




## *MST CORPORATION'S NO-NONSENSE WARRANTY*

*At MST Corporation, we believe a warrantee, and a guarantee, in essence, is in reality, a statement about the integrity of the parties to a transaction. Typically, a warranty says the vendor "warrants" their product against defects in materials and workmanship for some stated period, usually one year. At MST Corporation, we do not feel that time should be a factor. Consequently, if our methods of producing an end-result meet the standards we sell and adhere to; then our material and workmanship should be timeless.*

*The workmanship of any vendor—with time honored integrity and ethics—should speak for itself. Either MST Corporation does what we say, or we do not. Time is not at issue. As such, MST Corporation warrants our workmanship and materials for as long as you own the item—period. We intend our company to symbolize integrity and ethics, and we respectfully request the same from the people we deal with. If we can both adhere to these timeless, common sense principles, everyone benefits.*



*Ray Lackey  
CEO / Technical Analyst*



# MST CORPORATION

(541) 416-9000

www.mstcorp.com



## CONTACT INFORMATION

**Ship To:**

1659 SW Baldwin Road  
Prineville, OR 97754-9335  
Phone: (541) 416-9000  
Fax: 1.877.416.0628

**Remit To:**

1659 SW Baldwin Road  
Prineville, OR 97754-9335  
Phone: (541) 416-9000  
Fax: 1.877.416.0628

**Mitch Logan**.....*Customer Service and Support*.....[mitch@mstcorp.com](mailto:mitch@mstcorp.com)

**Julie Davison**.....*Office Administration*.....[julie@mstcorp.com](mailto:julie@mstcorp.com)

**Troy Lackey**.....*President*.....[troy@mstcorp.com](mailto:troy@mstcorp.com)

**Ray Lackey**.....*CEO/Technical Analyst*.....[ray@mstcorp.com](mailto:ray@mstcorp.com)